



**HEARTLAND**  
STEEL PRODUCTS



# WAREHOUSE & INDUSTRIAL SAFETY PRODUCTS

# Safety Rail

## PRODUCT OVERVIEW

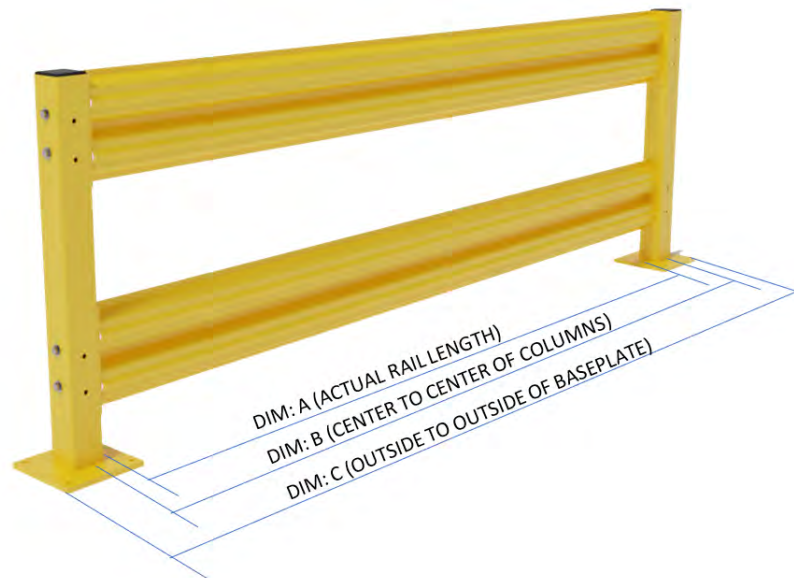
Protection for structural platforms, in-plant offices, conveyors, water mains, valuable equipment, and personnel. Easy to install with all the hardware provided with the columns. Able to withstand an impact of a 10,000 lb. load at a 5-mph rating. Custom 1" length increments upon request

## PRODUCT SPECIFICATIONS

- Protection for structural platforms, in-plant offices, conveyors, water mains, valuable equipment & personnel.
- Easy installation with all hardware included with columns.
- 10,000 lb. load at 5 mph rating.
- Bright OSHA yellow powder coat finish.
- Columns are 4" square high strength steel tube.
- Baseplate is 8" square x 1/2" thick steel, and can be offset if needed.
- Rails are 11 gauge high-tensile steel formed into a two rib corrugated design with two secondary ribs.
- 1/2" x 5" screw anchors and 1/2" connection hardware is provided.

## Dimension Table

P/N	DIM: A	DIM: B	DIM: C
R2	20"	24"	32"
R3	32"	36"	44"
R4	44"	48"	56"
R5	56"	60"	68"
R6	68"	72"	80"
R7	80"	84"	92"
R8	92"	96"	104"
R9	104"	108"	116"
R10	116"	120"	128"



Quick ship product - ships within 3-5 business days

# High Protection Safety Rail

## PRODUCT OVERVIEW

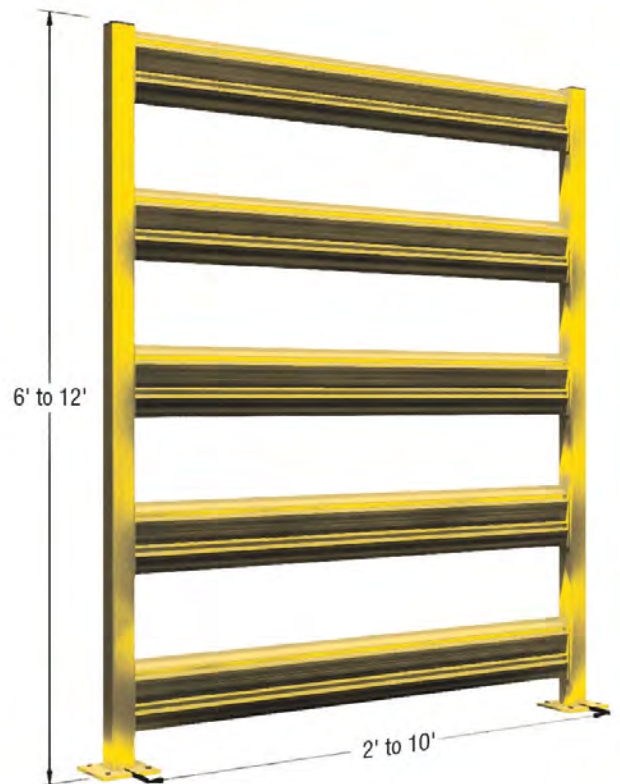
Provides protection of assets & personnel in hazardous areas of high product storage. Designed to minimize losses due to the toppling of highly stacked materials, into adjacent pedestrian traffic areas. System withstands a 3,300 lb. static weight load. Rated for 10,000 lb. impact at 5 mph.

## PRODUCT SPECIFICATIONS

- Simple installation, hardware included with columns.
- Special lengths in 1" increments available upon request.
- Columns are 4" square high strength steel tube.
- Baseplate is 8" square x 1/2" thick steel.
- Baseplate can be offset if needed.
- Rails are 11 gauge high-tensile steel formed into a two rib corrugated design with two secondary ribs.
- 1/2" x 5" screw anchors and 1/2" connection hardware provided.
- Bright OSHA Yellow.

## PART # DESCRIPTION

C3	72" Column-3 Rail Application
C4	84" Column-4 Rail Application
C4	96" Column-4 Rail Application
C5	108" Column-5 Rail Application
C5	120" Column-5 Rail Application
C8	144" Column-8 Rail Application
R10	Rail for 10' section
R9	Rail for 9' section
R8	Rail for 8' section
R7	Rail for 7' section
R6	Rail for 6' section
R5	Rail for 5' section
R4	Rail for 4' section
R3	Rail for 3' section
R2	Rail for 2' section



# Lift Out Safety Rail

## PRODUCT OVERVIEW

Lift Out rails are constructed uniquely from our standard bolt on rails, Lift Out brackets are welded to the column. The column layout must be specified: end, middle, corner, or continuous.

Designed to allow easy access to electrical panels, dock areas, machinery and utilities.

## PRODUCT SPECIFICATIONS

- Easy installation with all hardware included with columns.
- 5,000 lb. load at 4 mph rating.
- Bright OSHA yellow powder coat finish.
- Columns are 4" square high strength steel tube.
- Baseplate is 8" square x 1/2" thick steel.
- Rails are 11 gauge high-tensile steel formed into a two rib corrugated design with two secondary ribs.



C3 version not available in Lift Out design

### PART # DESCRIPTION

C1LOEND	18" Single Rail Column Lift Out End
C1LOMID	18" Single Rail Column Lift Out Middle
C1LOCNR	18" Single Rail Column Lift Out Corner
C1LOCON	18" Single Rail Column Lift Out Continuous
C2LOEND	42" Dual Rail Column Lift Out End
C2LOMID	42" Dual Rail Column Lift Out Middle
C2LOCNR	42" Dual Rail Column Lift Out Corner
C2LOCON	42" Dual Rail Column Lift Out Continuous

### PART # DESCRIPTION

RLO10	10' Lift Out Rail
RLO9	9' Lift Out Rail
RLO8	8' Lift Out Rail
RLO7	7' Lift Out Rail
RLO6	6' Lift Out Rail
RLO5	5' Lift Out Rail
RLO4	4' Lift Out Rail
RLO3	3' Lift Out Rail
RLO2	2' Lift Out Rail



C1LOMID



C1LOCNR



C1LOEND

# Pedestrian Handrail

## PRODUCT OVERVIEW

Pedestrian Handrail is an economical and versatile handrail system for plants, warehouses, etc. This lightweight, corrosion resistant handrail is an easy to install and reusable system to protect personnel, and vulnerable equipment. Designed to provide a ready solution for OSHA standard 1910.23(c)(1).

## PRODUCT SPECIFICATIONS

- Quick and easy installation with hardware included.
- Bright OSHA yellow powder coat finish.
- Post are high strength steel tube.

Part Number	Description
HR2C	2 Rail Corner
HR2S	2 Rail Straight-run
HR2E	2 Rail Extension



# Track Armor

---

## PRODUCT OVERVIEW

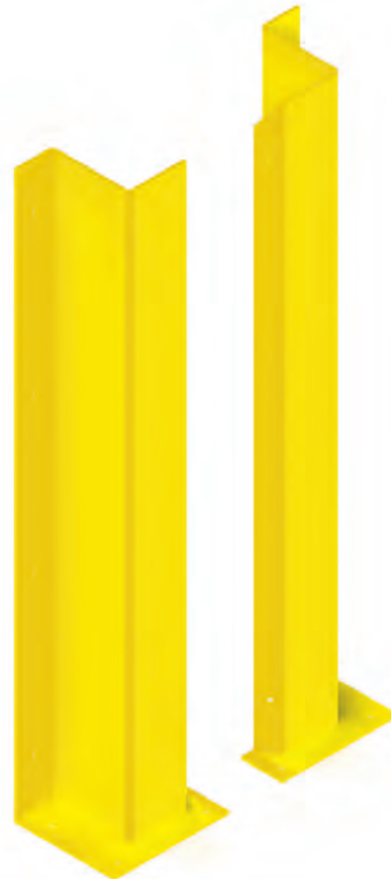
Designed to protect your door track system in your warehouse. Also, helps eliminate expensive track repairs and dock downtime that may occur.

## PRODUCT SPECIFICATIONS

- Simple Installation, mounts to floor and wall.
- Protects while not interfering with dock operations.
- Fully integrated base plate.
- Uprights are 3/16" material steel, with 7/16" holes for 3/8" anchors (Not Included).
- 1/4" base plate with three 1/2" mounting holes for 3/8" anchors (Included).
- Provided as a set (Left Hand / Right Hand).
- Bright OSHA Yellow.
- Protection for up to 5" track.

### PART # DESCRIPTION

TA24HD	24" High
TA36HD	36" High
TA42HD	42" High
TA48HD	48" High



# Z-Guard Track Armor

---

## PRODUCT OVERVIEW

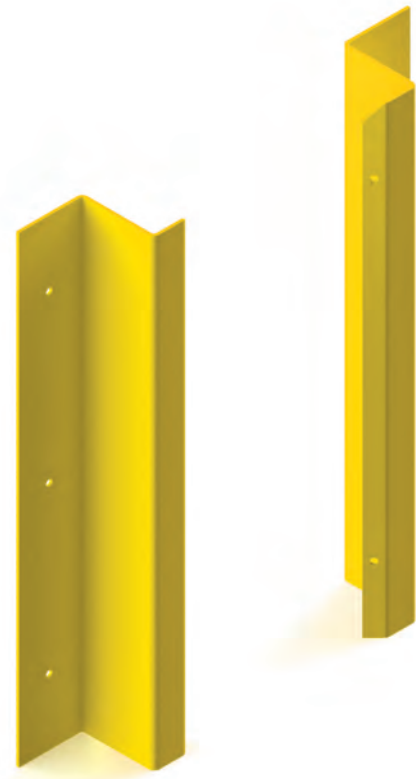
Designed to protect your door track system in your warehouse with NO FLOOR MOUNT REQUIRED. Also, helps eliminate expensive track repairs and dock downtime that may occur.

## Product Specifications

- Simple installation—mounts securely to the wall, NO FLOOR MOUNT.
- Protects, yet doesn't interfere with dock operations.
- Choose from standard heights of 36", 42" and 48".
- Upright installation holes are 7/16" for 3/8" anchors (not included).
- Provided as a set (left hand / right hand).
- Bright OSHA yellow powder coat finish.
- Projection for up to 5" track.

## PART# DESCRIPTION

ZG36HD	36" High
ZG42HD	42" High
ZG48HD	48" High



# Bolted Rack Guard

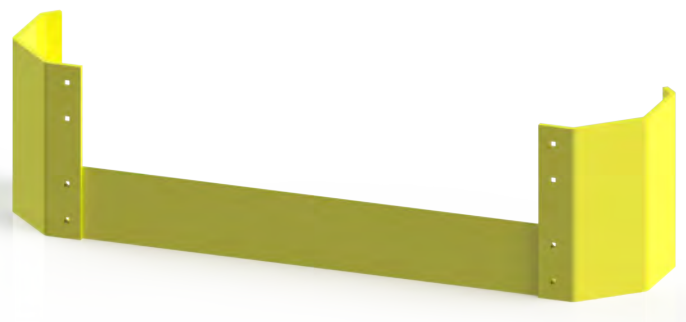
## PRODUCT OVERVIEW

Designed to protect your rack uprights effectively & economically, from incurring damages of fork trucks. Rack Guard are available for both single and double rows. It delivers an attractive, industry standard “low profile design” for high traffic intersections as well as frequently traveled aisles. Its highly visible Safety Yellow finish is ideal for end of rows or aisles. The bolted design allows for pieces to be placed and installed individually, and replaced separately as needed.

## PRODUCT SPECIFICATIONS

- Protects sensitive pallet rack row ends.
- Rack Guard available for both single and double row applications.
- Heads are 3/16” material steel.
- Angle stock is 5”x3”x1/4” material steel.
- Bright OSHA yellow powder coat finish.
- Special lengths are available upon request.
- Uses 3/8”x1” carriage bolts for heads (Included)
- 3/8”x4” screw anchors (Included)

DIMENSION TABLE					
P/N	Height	Length	Width	Angle Length	Hole Dia.
BRG42	12.00	53.50"	9.68"	36"	0.50"
BRG42R	12.00	44.75"	9.68"	36"	0.50"
BRG42L	12.00	44.75"	9.68"	36"	0.50"
BRG48	12.00	59.50"	9.68"	42"	0.50"
BRG48R	12.00	50.75"	9.68"	42"	0.50"
BRG48L	12.00	50.75"	9.68"	42"	0.50"



Quick ship product - ships within 3-5 business days



# Bollards

---

## PRODUCT OVERVIEW

Designed to protect your docking doorways, as well as building passages. Created to be mounted directly on any surface for an easy installation at any desired location. Able to withstand serious impact due to its usage of a Schedule 40 piping material.

## PRODUCT SPECIFICATIONS

- Protects dock doorways and building passages
- Excellent for separating vehicles from people
- 40" high in 4" and 6" diameters.
- 1/2" X 5" screw anchors (Included)
- Bright OSHA yellow powder coat finish
- Surface mounted design
- Larger base plate for 6" diameter



## PART NUMBERS

- B4HD - 4" Diameter HD Sch 40 Pipe
- B6HD - 6" Diameter HD Sch 40 Pipe

Quick ship product - ships within 3-5 business days

---

# Post Protectors

## PRODUCT OVERVIEW

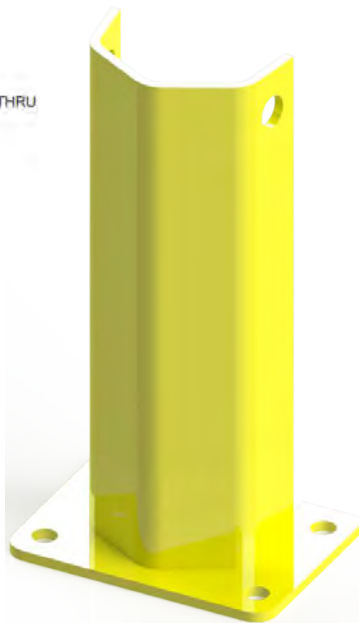
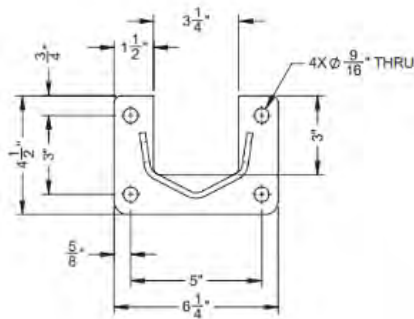
Easy to install post protectors fit standard uprights to protect your rack from impacts and save you costly repairs.

## PRODUCT SPECIFICATIONS

- Fit all standard rack uprights.
- Choose from standard heights of 12", 18", 24".
- Upright thickness is 1/4"
- Hardware included: PPxxHD (4) 3/8" screw anchors, PPSxxHD((2) 1/2" screw anchors.
- Standard or seismic base plates available.
- Simple installation.
- Bright OSHA yellow powder coat finish.

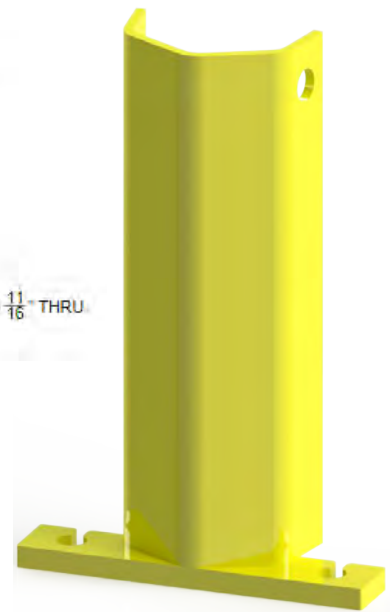
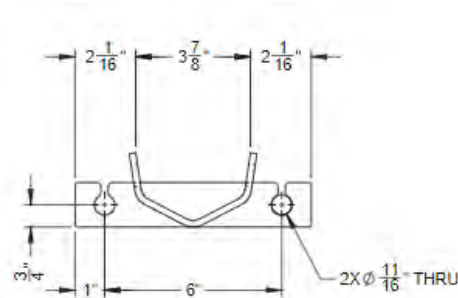
Part Numbers	
Standard	Seismic
PP12HD	PPS12HD
PP18HD	PPS18HD
PP24HD	PPS24HD

### PPxxHD



Standard base plate option

### PPSxxHD



Seismic base plate option

# Pedestrian Swing Gate

---

## PRODUCT OVERVIEW

Designed to be used with our dual rail safety rail system. The Pedestrian Swing Gate provides easy access to protected equipment while directing personnel to specific locations for safe entry and exiting of aisles used by fork trucks and loading dock areas.

## PRODUCT SPECIFICATIONS

- Gates are available in 3' or 4' wide.
- Universal mounting for right or left hand to push in or out.
- Adjustable closing speed and a hold open feature.
- Bright yellow powder coat finish.
- C2 Columns must be purchased separately.

## PART # DESCRIPTION

GT03	3' Standard swing gate
GT04	4' Standard swing gate
C2	42" High Dual Column



Photo above shows GT04 gate with two C2 columns. All installation hardware included.



## HSP Safety Product Line

- Industrial Stairs: OSHA & IBC
- Stair Towers: For all applications
- Stair Landings: Several standard sizes
- Ladders: Cage, Straight, & Steep Ascent
- Safety Gates: Pivot, Swing, & Sliding
- Cross-Over: All Types
- Catwalks
- Guardrail
- Overhead Door Track Armor
- Overhead Door Z-Guard
- Bollards
- Post Protectors
- Rack Guard



Heartland Steel Products is a designer and manufacturer of Safety Products and Pallet Rack, with over 40 years of experience. Our expert engineering and project management staff will offer you the optimum solution for your every need. Our team is committed to meet your highest expectations.

Pallet Rack brochures are available upon request.

