

Warehouse Automation

Redefining Warehouse Efficiency



Automation Made Easy

Only five modules,
so many opportunities

AutoStore™ is the ultimate order fulfillment solution, reducing the storage footprint by 75% when compared to traditional storage space with aisles and shelves. It solves some of the major business challenges faced by today's manufacturers.

With the highest density ratio of any goods-to-person system on the market, there are many advantages. Achieve four times the storage capacity from your company's current building or move your DC to a city center location to obtain speedy shipment times and worthwhile cost savings.

AutoStore has proven to be perfectly suited for large distribution centers with its modular, highly automated system. Likewise, the compact design is ideal for almost anywhere in-store to fulfill orders fast and efficiently.



The Worker: Robots

The AutoStore Robots tirelessly drive, dig, collect, and deliver Bins to workstations. Working in large or small teams around the world, each Robot is independently controlled for no single point of failure.



The Structure: The Grid

Where all the magic happens. The aluminum framework holds the Bins in place while also being the railways for robots. All that's needed is a flat floor.



The Container: Bins

AutoStore bins are stacked high and tight within the Grid. Available in three sizes, all goods are stored in these durable containers. To accommodate multiple product categories within one bin, it can be subdivided into different compartments.



The Workstation: Ports

Robots deliver Bins to AutoStore workstations, aka Ports, where order fulfillment and restocking happen. With four different Ports available, there is one or more to meet your throughput needs.



The Brain: Controller

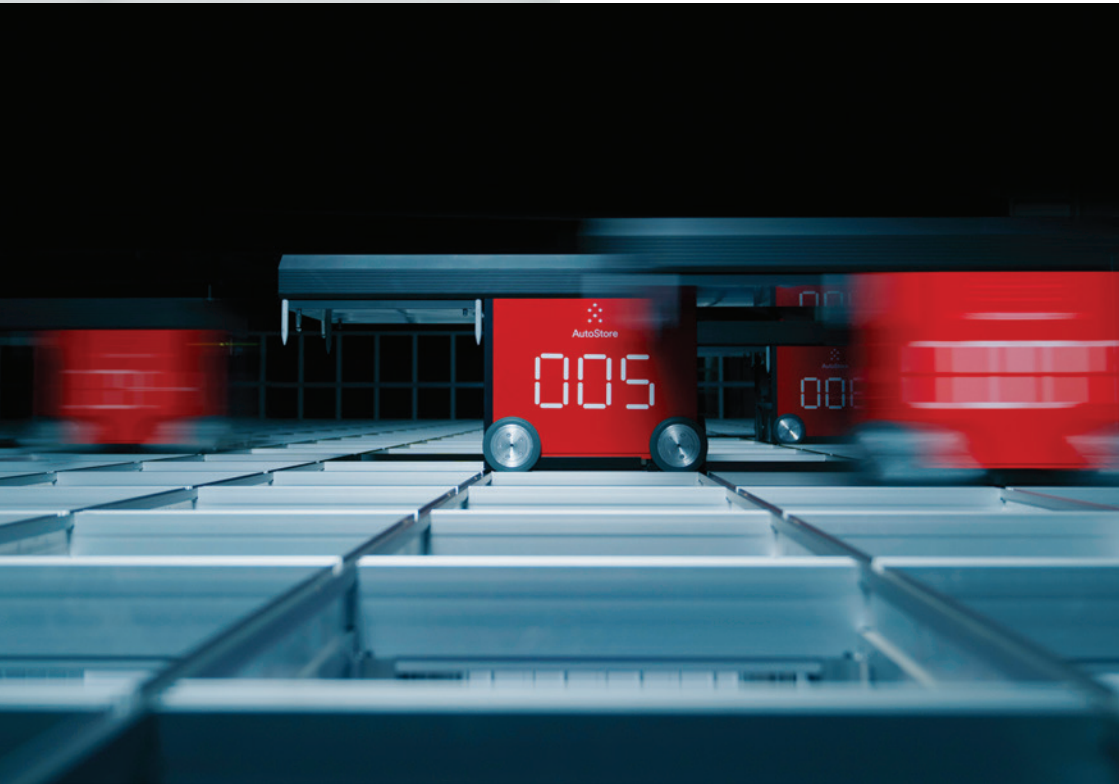
Traffic controller. Inventory tracker. Command center. The brain. The AutoStore Controller keeps track of everything. Always. It delivers advanced access control for service personnel while planning and scheduling tasks.

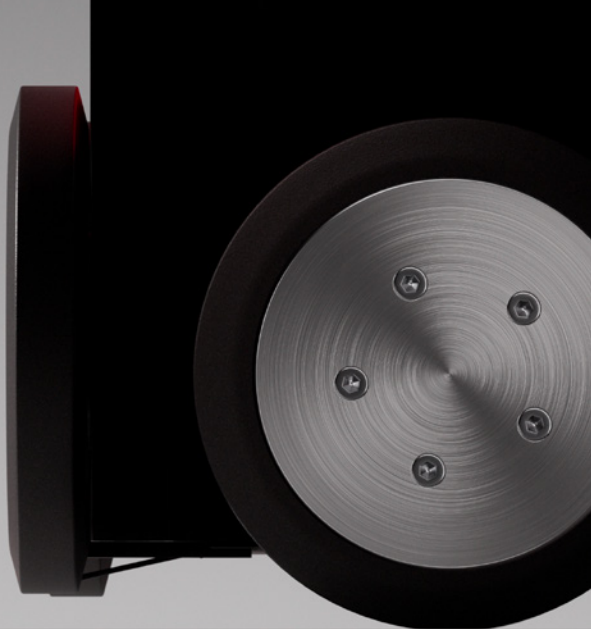


Warehouse solutions for manufacturing Reliability:

Unplanned downtime is expensive, making system uptime crucial. AutoStore has an unmatched uptime of 99.7%.

- **Space Efficiency:**
AutoStore allows you to use space more efficiently so you don't need a new facility. It adapts to any warehouse layout and easily expands.
- **Security:**
Gain better control of high-value stock. AutoStore is a closed-off system, so you can control who is touching what and prevent theft.
- **Labor:**
Automation helps solve the skills gap for companies struggling to fill high-salary, in-demand positions.





Increase Storage Depth and Visibility

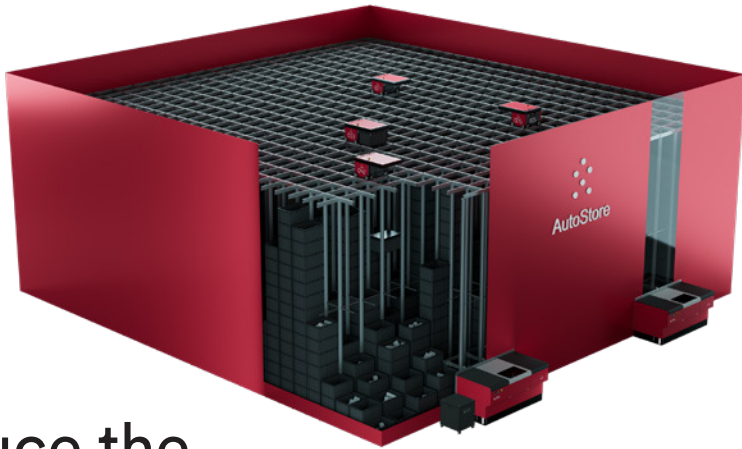
Having the option to bring more of your production onshore can give you the peace of mind that comes from having far greater control over your stock and scheduling. The AutoStore automation system takes up far less space than shelving, providing you with more space for increased stock depth. Or repurpose spaces throughout your sites to increase operations for improved supply chain resilience.

You also gain the data-driving advantage to keep track of every single item passing through, helping you substantially reduce inventory losses or errors. With this enriched level of awareness, take care of your bottom line all while increasing production efficiency.

Adapt to rapid changes

AutoStore is a flexible system helping you adjust to sudden dips in demand. Quickly and easily scale your operations up or down with minimal disruption. Many AutoStore customers have expanded their systems multiple times from adding ports or robots for increased throughput, to adding bins or a grid expansion for additional storage.





Reduce the Storage Footprint and Up Your Game



Fastest

AutoStore is the fastest and densest order fulfillment system in the world per square foot.



Reduce labor costs within your warehouse

Our automated storage and retrieval system (ASRS) harnesses the power of warehouse robots for 24/7 picking reliability. The dense layout can quadruple storage capacity, eliminate the need to expand or move, and increase productivity.



Grow While Running

AutoStore is designed for easy system expansion. Grow your capacity without shutting down operations or experiencing downtime.



24/7 Operations

Our unbeaten up-time (99.7%) and no single point of failure means you have constant access to your inventory, supporting 24/7 operations.



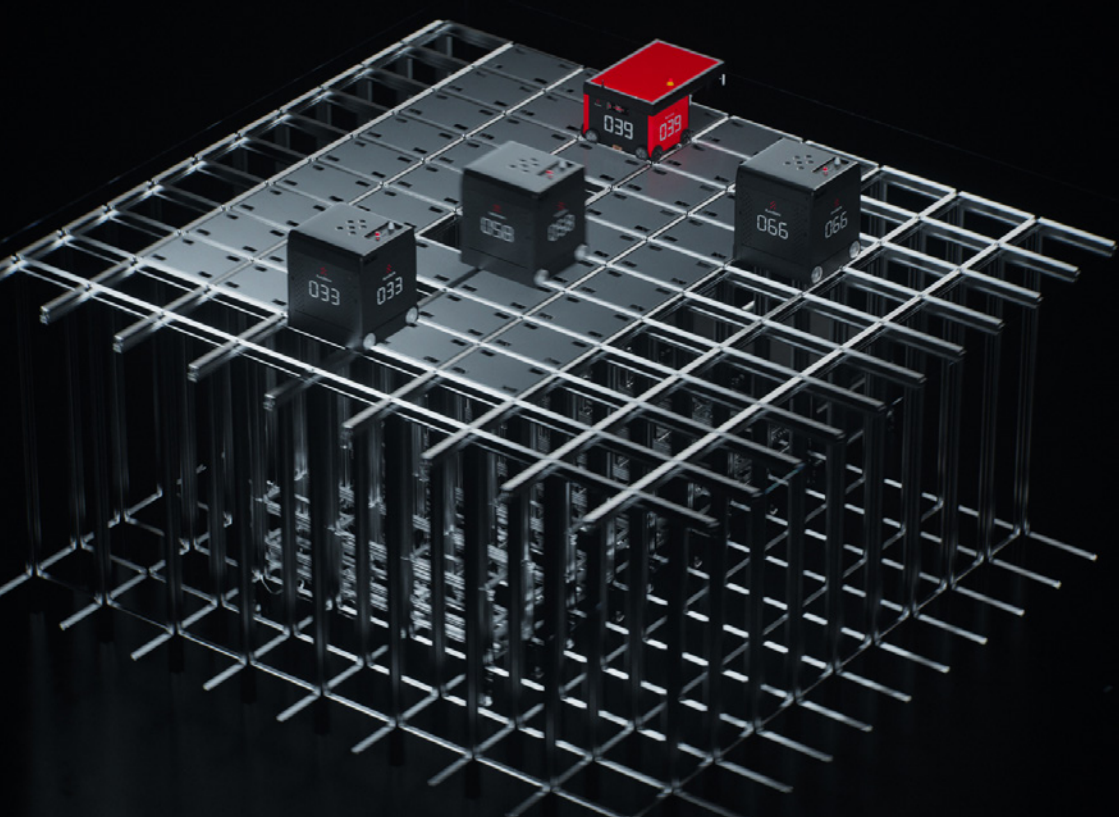
Customize to Fit Anywhere

The design is modular-based, and just like building blocks, you can build any shape, form, or height you need.



Go Green

Our green credentials are unrivaled, and zero energy is wasted. Ten robots use the same amount of energy as a vacuum cleaner.



The Cube Storage Pioneers

AutoStore, founded in 1996, is a warehouse robot technology company that invented and continues to pioneer cube storage automation, the densest order-fulfillment solution in existence.

Our focus is to marry software and hardware with human abilities to create the future of warehousing.

The company is global, with 1,000+ systems in 45+ countries in a wide range of industries.

All sales are distributed, designed, installed, and serviced by a network of qualified system integrators we call “partners.”

Office Locations: The company headquarters is in Nedre Vats, Norway, with offices in Oslo (Norway), the U.S., UK, Germany, France, Spain, Italy, Austria, South Korea, Japan, and Singapore.

Our production facilities are located in Koszalin, Poland