



We create advanced electric actuators able to provide safe and clean movements with accurate and smooth motion controls.

We deliver innovative industrial solutions that improve farming activity through automation.



***Improving
agriculture
through
technology***

Electric Technology for Farming Equipment Automation



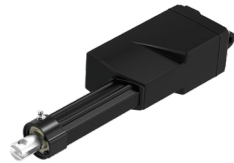
MA1

- 4,500N in push
- Up to IP69K
- Operational temp. range: -30°C~+65°C
- Options: Overload clutch, Hall sensor(s), POT, manual crank function



MA2

- 6,000N in push
- Up to IP69K
- Operational temp. range: -25°C~+65°C
- Options: Hall sensor(s), POT



MA5

- 3,500N in push
- Up to IP69K
- Operational temp. range: -25°C~+65°C
- Options: Hall sensor(s), POT, grease chamber



JP4

- 4,500N in push
- Up to IP69K
- Operational temp. range: -5°C~+65°C
- Option: Hall sensor(s)



JP7

- 4,500N in push
- Up to IP69K
- Operational temp. range: -30°C~+65°C
- Options: Hall sensor(s), T-Smart



TA38

- 1,500N in push
- Up to IP66
- Operational temp. range: +5°C~+45°C
- Option: Hall Sensor(s)

Seen at 2020 FIMA: Intelligent Solutions

T-Smart Technology



MA2

Electric Actuator



TP6

Power Supply



TWD2

Wireless Dongle

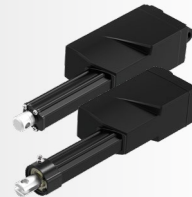


TH30

Hand Control

Our industrial actuators with integrated controller (IC) provide easy maintenance, control and installation. TiMOTION offers various intelligent solutions such as CAN bus (SAE J1939...) and the H-bridge integrated within some actuators.

It can handle up to 7 actuators and be programmed very easily from your personal computer!



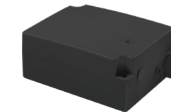
MA5

Electric Actuator



TIC1

Control Box



TP6

Power Supply



TAD1

Dongle Adapter

Our electric actuators can be programmed for any industrial equipment with the new TIC1 control box. It can handle up to 2 actuators and will give smooth and reliable movement where you need it!



TIMOTION USA

For more information, please visit our website www.timotion.com
Or email us sales.us@timotion.com

Copyright © 2020 TiMOTION. All rights reserved.

