



Warehouse Control System (WCS) Software

The central software hub for your integrated material handling automation system.



A Broad Range of Capabilities:

A warehouse control system (WCS) directs “real-time” activities within warehouses and distribution centers. It should act as a traffic regulator for warehousing activities, with the mission of running material handling systems (and in some instances, the activities of workers). A good WCS system provides a broad, yet consistent interface for material handling systems like conveyors, carousels, palletizers, sorters, and more.



Pick:

Control picking operations, including pick-to-light. Manage the number of items per pick, and match them to live orders, decrementing as orders are completed.



Receive:

Control multi-sided scanning with order lookup. Allows a warehouse to automatically receive inventory and distribute to a storage location.



Sort:

Manage and control sort lanes. Allows the configuration of all sort rules, logs any sort errors and package exceptions.



Pack:

Associate picked orders to their respective cartons, so they can be identified and managed along the automation.



Ship:

Synchronize outbound shipping, for automated scan, weigh, dim, print-apply manifesting systems, in connection with TMS software. Log all shipped orders throughout the process.



Confirm:

Sends all order shipment confirmation statuses to customer's ERP, WMS or other TMS software database.



Insert:

Manage document automation systems. Allow the configuration of pack slips, track document insert process.



Verify:

All order information printed and inserted or applied to the outside of the carton can be verified with a barcode read for ultimate order integrity.



Void:

Dynamically calculates remaining void space within an outgoing box. Controls void fill machine to automatically achieve consistent fill portions.



StreamTech WCS at a Glance:

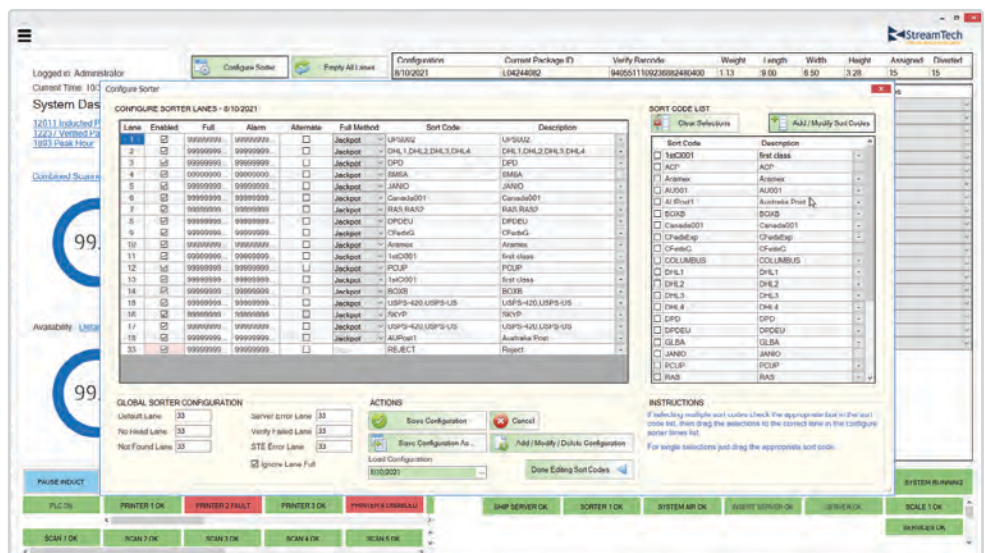
Monitors realtime statuses and simplifies control.

Easily see alarm statuses, maintenance, and troubleshooting notifications.



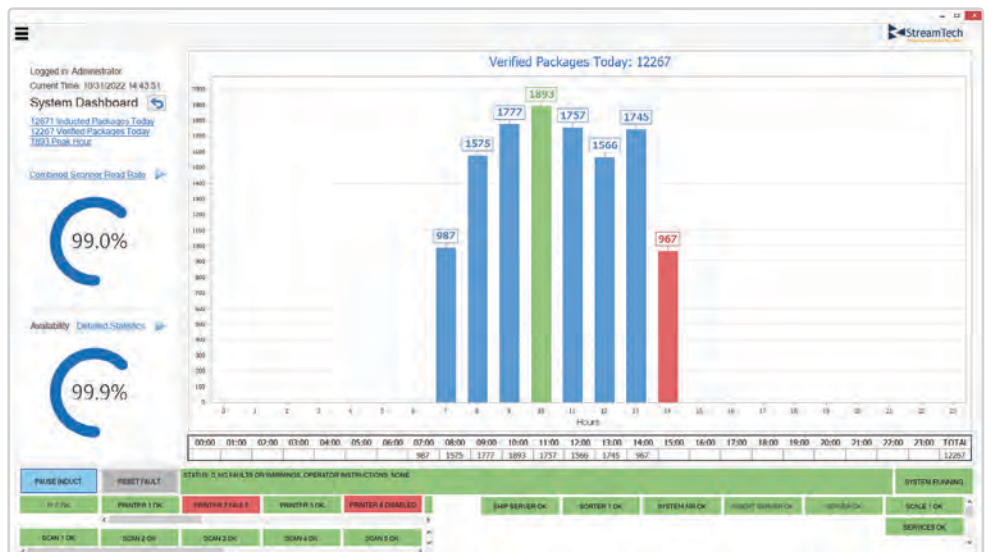
Configure your equipment on the fly.

Add or modify sortation rules, redirect printer signals, update label and document templates.



Rich data insights and reporting metrics.

Logs all order flow through the warehouse, with charts, spreadsheet exports, and live dashboards.



Your Warehouse, Synchronized.

Re-imagine what your warehouse can do.

From picking, packaging, to outbound shipping, StreamTech's Warehouse Control System (WCS) integrates and synchronizes material handling systems, giving you one central hub for your entire warehouse automation. The WCS oversees all inputs and outputs to equipment such as:

- Pick-to-light, voice picking
- Goods-to-person, AMRs
- Cartonization packaging systems
- Document automation
- Dimensioners, scanners
- Scales, checkweighers
- Print and apply labeling
- Sortation and conveyance
- Multi-carrier, ERP software

