

Directed Picking Automation

**Turnkey Picking Systems:
Picking Software + Wired or Wireless Hardware Systems**



STREAMTECH - Pick to Light Server

Licensed to: StreamTech Engineering
Logged in: Administrator
Current Time: 01/05/2024 10:40:17

System Dashboard

0 Picks Today
0 Orders Today
0 Peak Hour

Instantaneous
Average

Picks / Min

Bin Name	Roster Address	Display Address	Shelf Address	Device Address	Dev
6.1.3	192.168.2.86			0x0149	Z6-
6.1.4	192.168.2.86			0x014A	Z6-
6.2.1	192.168.2.86			0x014B	Z6-
6.2.2	192.168.2.86			0x014C	Z6-
6.2.3	192.168.2.86			0x014D	Z6-
6.2.4	192.168.2.86			0x014E	Z6-
6.3.1	192.168.2.86			0x014F	Z6-
6.3.2	192.168.2.86			0x0150	Z6-
6.3.3	192.168.2.86			0x0151	Z6-
6.3.4	192.168.2.86			0x0152	Z6-
6.4.1	192.168.2.86			0x0153	Z6-
6.4.2	192.168.2.86			0x0154	Z6-
6.4.3	192.168.2.86			0x0155	Z6-
6.4.4	192.168.2.86			0x0156	Z6-
6.4.5	192.168.2.86			0x0157	Z6-
6.4.6	192.168.2.86			0x0158	Z6-
6.4.7	192.168.2.86			0x0159	Z6-
6.4.8	192.168.2.86			0x015A	Z6-
6.4.9	192.168.2.86			0x015B	Z6-
6.4.10	192.168.2.86			0x015C	Z6-
6.4.11	192.168.2.86			0x015D	Z6-
6.4.12	192.168.2.86			0x015E	Z6-
6.4.13	192.168.2.86			0x015F	Z6-
6.4.14	192.168.2.86			0x0160	Z6-
6.4.15	192.168.2.86			0x0161	Z6-
6.4.16	192.168.2.86			0x0162	Z6-
6.4.17	192.168.2.86			0x0163	Z6-

PAUSE PRODUCT RESET FAULT
PLC OK SHOW SCANNERS

STATUS: 0 NO FAULTS OR WARNINGS. OPERATOR INSTRUCTIONS: NOTE TO OPERATORS: MOST FAULTS REQUIRE A PRESS OF THE FAULT BUTTON



< Change Qty.
< Operator 15

Wireless Smart Pick Carts

Pickers can batch pick multiple orders simultaneously using a pick-to-light equipped smart cart. The cart will be filled with empty cartons, each representing an order with its own ID.

The picker travels with that cart along either SKU-dense rack of common "high movers" until all orders are fulfilled, or the cart may travel to the next "pick zone" where another worker takes the cart, until all orders are fulfilled. The rack can be active with lights, or passive with another marker such as a SKU or bin location.



Increase Pick Rate, Speed & Accuracy:

Adding carts can increase the number of orders one picker can fulfill. The addition of the automated lights takes the guesswork out of the process, speeding up each pick.

Real-Time Inventory Integration:

Real-time visibility into stock levels and movement enables better inventory control, demand forecasting, and replenishment planning, ultimately reducing stockouts, overstock situations, and associated costs.

Easy to Implement & Scale:

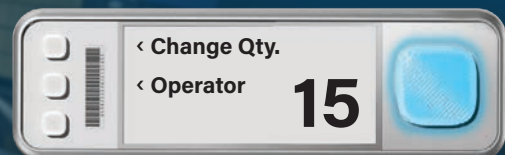
Pick carts allow you to automate your existing pickers, and then add more carts as your business grows, or to accommodate peak seasons or new product lines.

Customizable Carts:

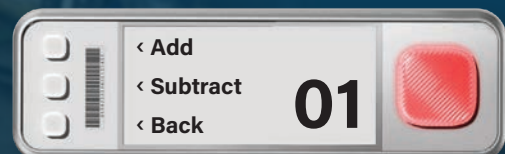
Carts can be designed to meet your specifications, to maximize cartons and pick locations on each rack. Or your existing carts can be easily retrofit with the magnetic, battery-operated light devices.

Wireless Devices:

The FCC-approved devices connect wirelessly via router base station, and use e-paper displays to conserve battery. The three side buttons and large multi-colored confirm button allow operators to perform functions such as replenishment and short picks directly from the device, through StreamTech's picking software. With seven colors, many operators can work in the same area.



Pick:



Replenish:

Velocity Conveyor Pick Modules

Each inventory bin location is equipped with a light module, usually along a consolidated inventory aisle, called a "forward pick rack". Empty cartons convey to the pick-to-light area with their own unique ID barcode.

Once the carton is inducted, the system directs the picker to the location of the items by illuminating the corresponding lights. As each item is picked, the worker confirms the pick by pressing a button or triggering a sensor. Completed order cartons can advance once all items are picked.

Improved Efficiency & Throughput:

Pick modules are designed to optimize the picking process by organizing inventory in a systematic manner, resulting in faster order fulfillment and increased throughput as orders convey through the pick zone.

Scalability & Flexibility:

Pick modules can be designed and configured to adapt to changing business needs and inventory profiles. Whether accommodating seasonal fluctuations, new product lines, or shifts in demand patterns, pick modules offer scalability and flexibility to support evolving warehouse operations.



Real-Time Inventory Integration:

Real-time visibility into stock levels and movement enables better inventory control, demand forecasting, and replenishment planning, ultimately reducing stockouts, overstock situations, and associated costs.

Reduced Errors:

With a structured layout and clear labeling systems, pick modules minimize the likelihood of picking errors. Pick modules help to prevent mistakes such as picking the wrong item or quantity, ultimately enhancing accuracy and customer satisfaction.

Wired Devices:

The wired devices are well suited for applications with a high volume of pick locations across many SKUs. The devices are mounted on a piercing cable contact for easy installation. Devices have a multi-colored pick confirm button to allow multiple operators to work in the same area, and five function keys that correspond to StreamTech's picking software.

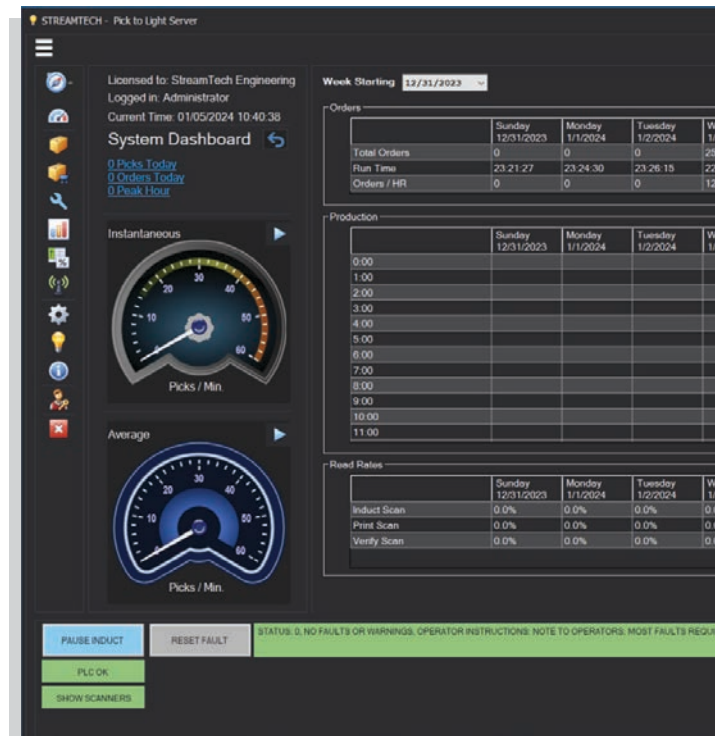


Intelligent Picking Software

StreamTech WCS Picking Software:

StreamTech's WCS Picking software allows you to manage all the Picking Client stations, and gives you additional administrative functions such as:

- Manage operators' accounts and log-ins
- Order import - wave and order management
- SKU management - importing from item master
- Bin/SKU mapping
- PTL device management - add/remove, monitor faults for PTL equipment
- Conveyor pick zone path routing
- See SKU quantities, lot numbers, picks per station
- See picks per minute
- Read and export weekly reports showing picking totals, averages, scanner health and pick accuracy %

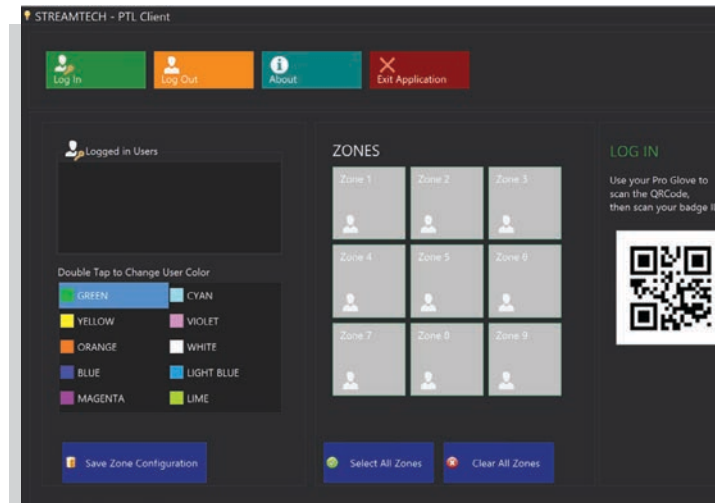


Server Screen

Client-Side Software:

On the client devices, picker operators can sign-in, and assign themselves to one or many pick zones. There is a client station at each zone for convenience.

- Sign-in by operator badge ID (tracks performance)
- Choose operator pick light colors
- Divide operators into full zones or split zones to up to 3 operators (called areas)
- Managers can use any client device to see the operator coverage of the whole system



Client Screen