



# Print & Apply Shipping Automation

Integrated systems for weighing, dimensioning, manifesting, print and apply labeling, and scan verification.





# Why Automate Shipping?

Automating the end of line shipping and manifesting processes can deliver one of the greatest investment paybacks, with measurable impacts across a range of critical factors affecting warehouse operators today.

## Outsmart the Labor Shortage



Remove manual hand scan, label, weigh and manifest of each shipment. Consolidate multiple manual pack and ship stations into a single lane so your staff can take up other responsibilities.

## Scale with Peaks and Growth



Perhaps the most underrated benefit, scaling for weekly rush days and annual holiday peak is no longer as challenging. Automation also gives you room to grow without multiplying labor.

## Control Carrier Costs



Connecting the dim, weigh, scan, print apply systems with our WCS software to your WMS and multi-carrier allows real-time rate shopping between carriers, and prevents costly chargebacks.

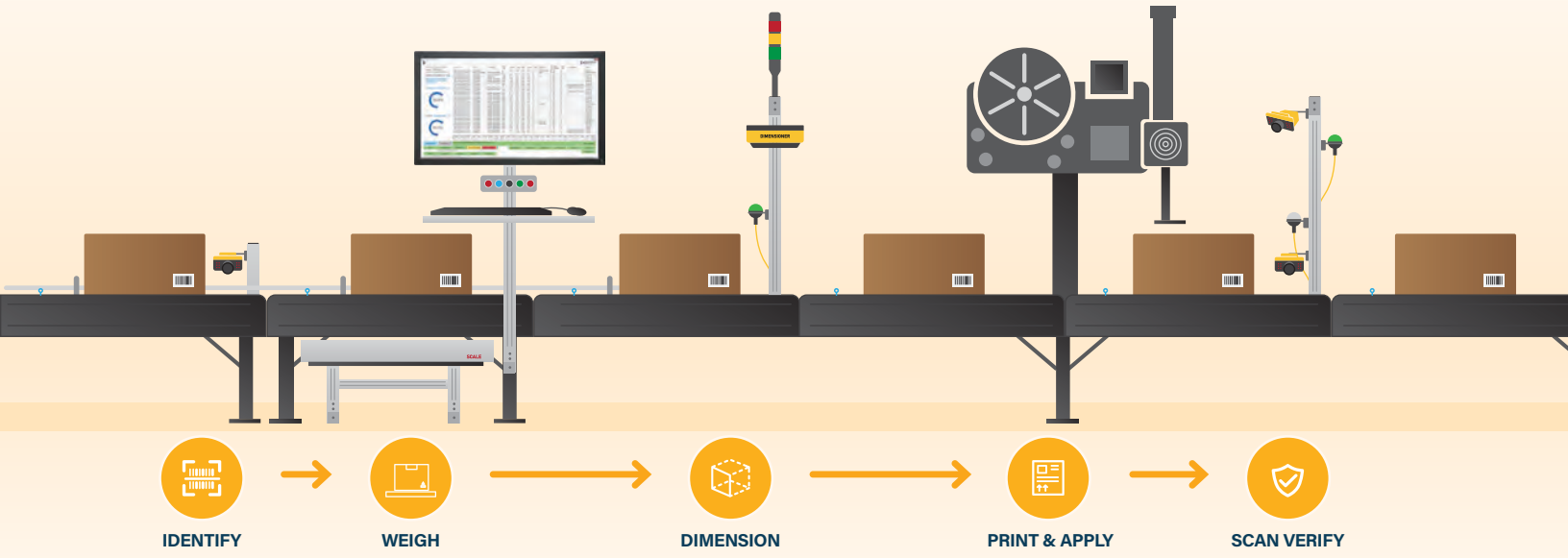
## Accuracy Verification



Multi-stage scan verification is critical to automating the fulfillment process. Removal of the random human error means increased customer satisfaction and fewer rates of return or loss.



# One Process, Many Configurations:



## Multi-Line

Simplify systems by matching print-apply and manifesting technology directly with discrete packaging equipment.

- Provides slight over-capacity versus packaging machine
- Modular expansion capability
- Varying packaging technology based on order type and form factor
- Simplifies operation



## In Motion, Multi-Labeler

High speed systems often aggregate labelers in series (operating in parallel) along a single conveyor line using an encoded belt and height compensation for maximum throughput in minimal footprint.

- 15-25 cartons per minute, per labeler (e.g. 3 labelers x 20 = 60 CPM)
- Uses in-motion scale and dimensioner from 60-100 CPM
- Intelligent software automatically manages labeler media and exception status
- Integrates with high-speed sortation
- Centralizes labeler management



## Sprinter™ Pre-Engineered

Pre-engineered, all-in-one system uses standard components. Assembled and tested prior to shipment, can often be installed and running in as little as one day with surprising throughput.

- 600 to 1,000 cartons per hour
- Standard design and inventory components for quicker lead times
- Accumulation conveyor accommodates manifest response variation
- Standardized interfaces
- Excellent first step into automation



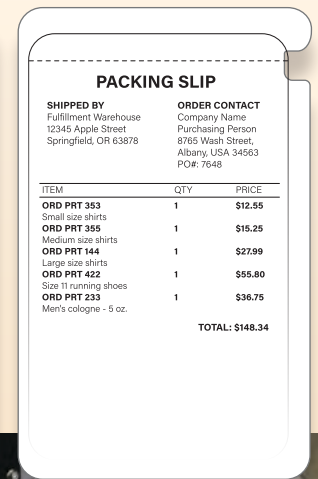
# Compliance, Hazmat Labeling

Shipments containing batteries or other hazardous materials must be labeled for DOT compliance, with specific size and data required. Automate UCC and other compliance requirements while accounting for shipping quantities with print and apply technology.



# DuplexPackSlip® Labeling

Add a packing slip and/or return label to orders which ship in their original packaging. DuplexPackSlip® uses a special double-sided label which allows the top portion to be peeled to reveal a hidden pack slip, return label or other message on back. It can also be used in triplex with a label below. Now available in an environmentally-friendly linerless configuration.





# Integrated Scan, Weigh, Dimension



## Identification

Accurate identification is foundational for a reliable system.

- Generic license plate advantageous vs. explicit order label
- Consider downstream order routing and carrier sortation
- Simplest is single side, Code 128, ladder orientation
- UPC can be used for receiving or batch singles processing
- Multi-sided tunnels are complex but useful (e.g. receiving)
- Can scan RFID and OCR for niche applications



## Weight

Once identified, StreamTech captures an accurate weight. A range of solutions are available for different applications and accuracy requirements.

- Sprinter™ scale with surprising throughput performance
- NTEP rated, EMFR high accuracy available
- Multi-belt scales to maximize throughput for carton variety
- Can check accuracy against calculated weight
- In-motion systems from 60-100 CPM (cases per minute)



## Dimension

Parcel carrier charges are based on dim weight, or package dimensions. Failure to consider dimensions may result in overpaying for shipping.

- Standard- integrated camera-based 0.20 inch accuracy
- Completely remote supportable
- WCS records dims for carrier review and packaging audits
- Dim data often used for print-apply and sortation functions
- Large form factor dimensioning solutions available



## Verification

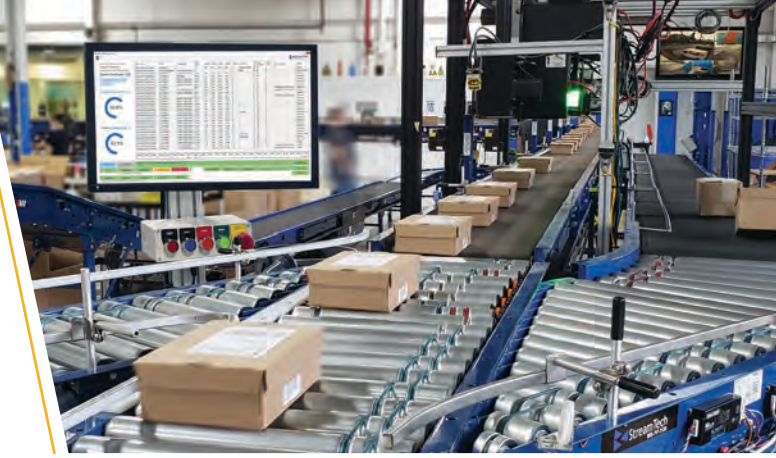
Machine-level accuracy is both critical and beneficial to a fully automated manifesting process.

- Scan during and after label application
- Parity check between scanned and applied labels
- Manage exceptions with configurable business rules
- Combine with downstream functions (e.g. sortation)



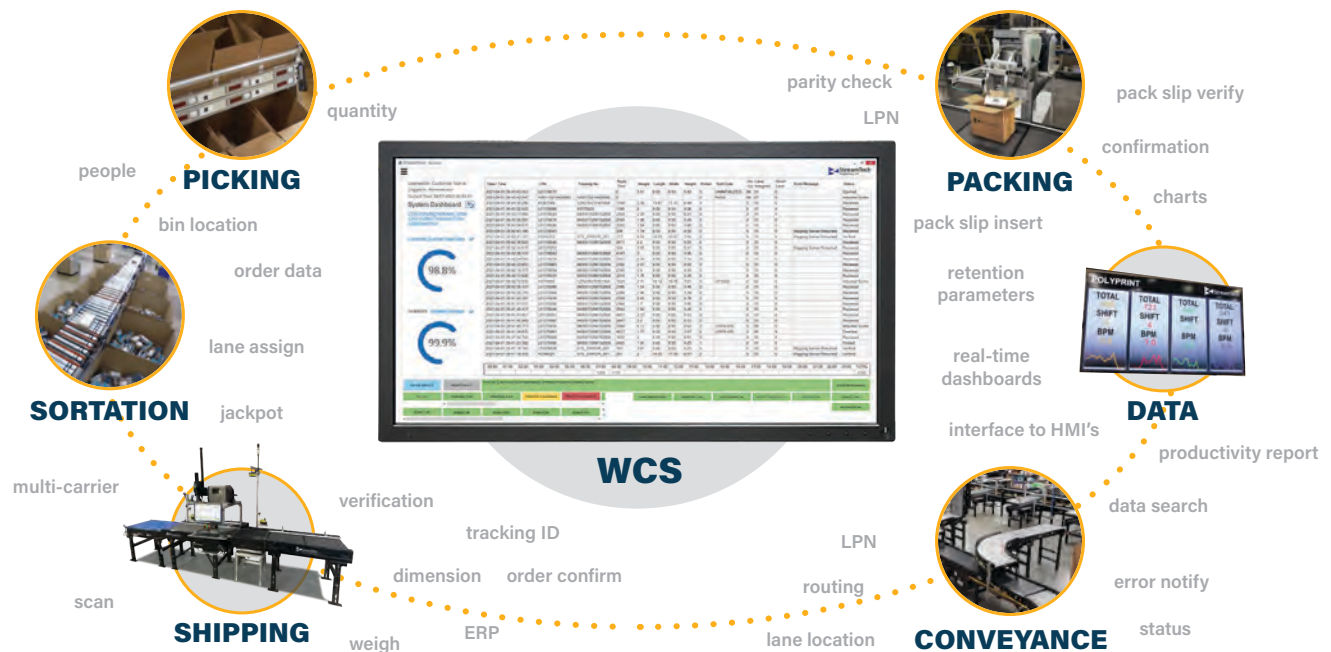
# Your Warehouse, Synchronized.

## Powerful Warehouse Control System (WCS) Software



Every StreamTech system is powered by our intelligent WCS software, which provides the real-time data transfer between the automation equipment and your order database. It manages the flow of information, monitors equipment statuses, simplifies controls, allows configuration of equipment on the fly, and provides rich reporting metrics. Integrating to your WMS, ERP, or multi-carrier platform provides powerful functions like real-time rate shopping by carrier and package size, address verification, shipment status, and proof of delivery.

- Shows alarms, maintenance notifications
- Add or modify sortation lanes and rules
- Redirect printer signals in the event of an issue
- Modify document or label templates
- Logs all order flow within the warehouse
- Provides manager-level reports and metrics
- Integrates with ERP, WMS, multi-carrier
- Drives picking, AMRs
- Cartonization for packaging automation
- Real-time dashboards for production floor
- Manages document automation systems
- Search by order, LPN, tracking, category, lane, etc



TECHNICAL SUPPORT:  
833.783.7878  
support@streamtecheng.com

2260 Ball Drive,  
St. Louis MO 63146  
www.streamtecheng.com