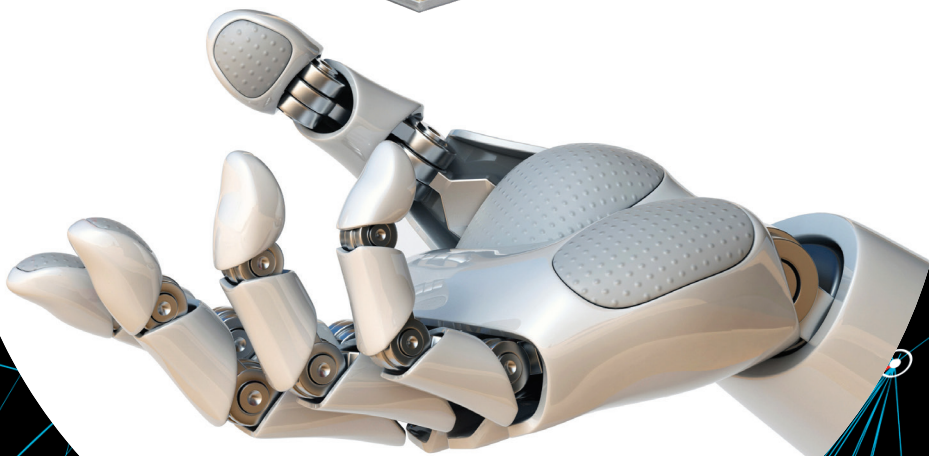
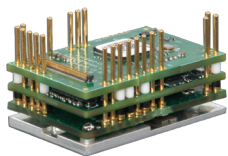


# ADVANCED MOTION CONTROLS

FlexPro<sup>®</sup>



Introducing our...

**Smallest,**

**Most Versatile,**

**Most Advanced,**

**...Servo Drives to date!**

## Growing doesn't always mean getting bigger.

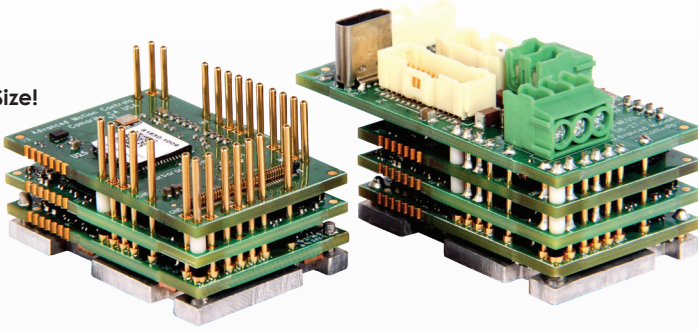
We're in a new era of motion control where advancements in robots and automation are accelerating at a rapid pace.

There is a growing demand for smaller, more versatile, and higher power servo drives that are designed to easily integrate into ever-tightening constraints.

We have accepted the challenge and answered the call!

Introducing a new family of drives, FlexPro®.

Actual Size!



PCB Mount

Machine Embedded

### Specifications

	Fx060-25-yM*	Fx060-10-yM*	Fx060-5-yM*
Input Voltage		10 - 55 VDC	
Peak Output Current	50 A	20 A	10 A
Continuous Output Current	25 Arms	10 Arms	5 Arms
Network Communication	EtherCAT or CANopen		
Feedback Supported	BiSS C-Mode, Incremental Encoder		
Dimensions (PCB Mount)	38 x 25 x 16 (-EM) / 38 x 25 x 12 (-CM)		

\* Where **x** indicates versions available:  
**FE060...** (PCB Mount)  
**FM060...** (Machine Embedded)  
**FD060...** (w/ Development Board)  
**FXE060... & FXM060...** (Extended Environment)

\* Where **y** indicates network protocol:  
**E...** (EtherCAT)  
**C...** (CANopen)



Development Board

Ask about...

**RS485, other Ethernet fieldbuses**  
**Additional Absolute Feedback**  
**(Tamagawa, SSI)**  
**Higher power levels**  
**Building block for modifications**  
**and complete custom solutions**

Perfect for...

**Cobots**  
**Warehouse Robots and AGVs**  
**Portable/Mobile Devices**  
**Integrated Designs**  
**Lab Automation**  
 ...And endless others!

**ADVANCED**  
**MOTION CONTROLS**  
 Everything's Possible.

3805 Calle Tecate  
 Camarillo, CA 93012  
 www.a-m-c.com  
 805.389.1935