

Getting More from Your **SAP S/4-HANA System**

Content contribution by Don Osburn

ivanti | Wavelink

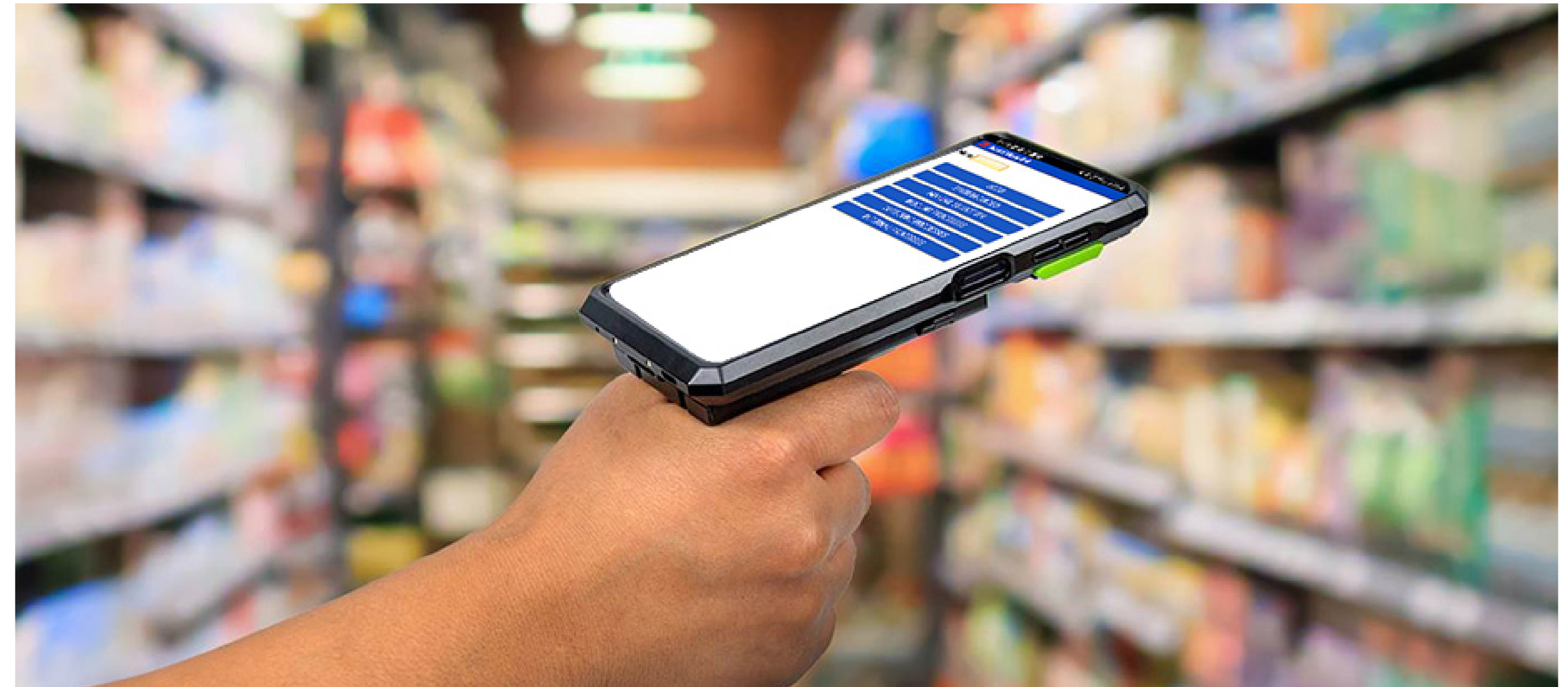
SAP Certified
Integration with SAP S/4HANA

A UX on the Edge

Supply chain operations managers rely on SAP S/4-HANA to manage their complete warehouse operations more effectively. SAP is one of the largest WMS providers in the world, and according to Gartner, 22 of the 25 top supply chain companies use SAP for their day-to-day operations.

Emphasizing its sphere of influence in the industry, SAP S/4-HANA, or SAP EWM, is the “Gold Standard” for managing warehouse operations. But a competitive world always requires more. 87% of managers in a recent study by Zebra indicated the need to increase warehouse productivity just to stay competitive.

How does a business that relies on SAP EWM meet these demanding metrics? Certainly, SAP continues to provide updates to increase efficiency and productivity; for example, the transition from SAP Console to SAP ITSmobile. But those changes can be slow and costly to implement. Where can a warehouse operations manager turn to within their operations to wring out even more speed and productivity from their baseline operations?

A photograph of a worker wearing a high-visibility vest and a dark long-sleeved shirt, holding a mobile device. The worker is standing in front of the front of a white truck. The device screen shows a SAP application interface.

87%
indicated the need to increase
warehouse productivity to
stay competitive



The Mobile User Experience (UX)

AN UNTAPPED ADVANTAGE

One area of SAP workflow that is ripe for productivity gains is the User Experience on the mobile data-entry device. These devices may be handheld barcode scanners, forklift-mounted barcode scanners, tablets, wearables, or other mobile computers employed to interface with the SAP EWM system. Although SAP EWM is providing the back-end logic to control all operations, it is on this mobile device UX (“the Edge”) where the rubber meets the road. These devices determine how, when, and where material handlers move product through the supply chain. Therefore, making this UX more efficient can extract huge productivity gains from existing SAP EWM implementations.

An Example of Common Challenges

Assume a material handler is in the warehouse using a traditional barcode scanner to connect to SAP ITSmobile. ITSmobile is the HTML or browser-based interface to SAP. As such, the handler’s interface to the SAP system is via some type of HTML browser on the barcode mobile scanner.

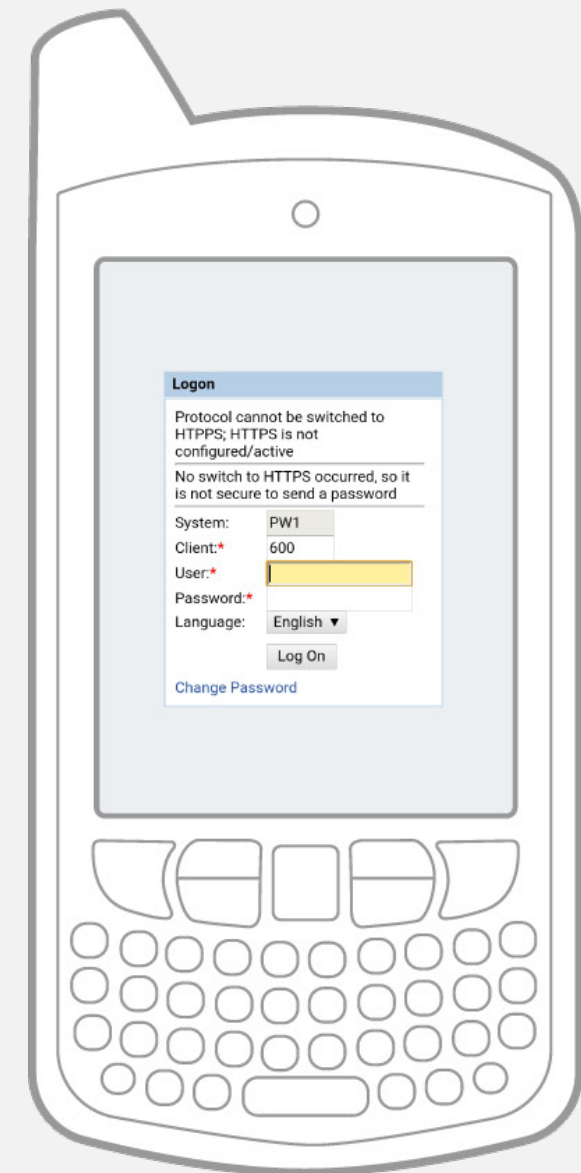
Right away this presents several challenges. First off, the screen real estate on all barcode devices is radically different from a PC

or laptop screen. As such, the SAP workflow screens presented on the barcode device rarely fit on the screen properly. This means material handlers must constantly scroll around on a very unforgiving screen to find the parts of the page they need just to execute their current workflow. Time spent by the handler scrolling on the device is NOT productive. It not only radically slows down workflow, it drastically increases the probability of errors.

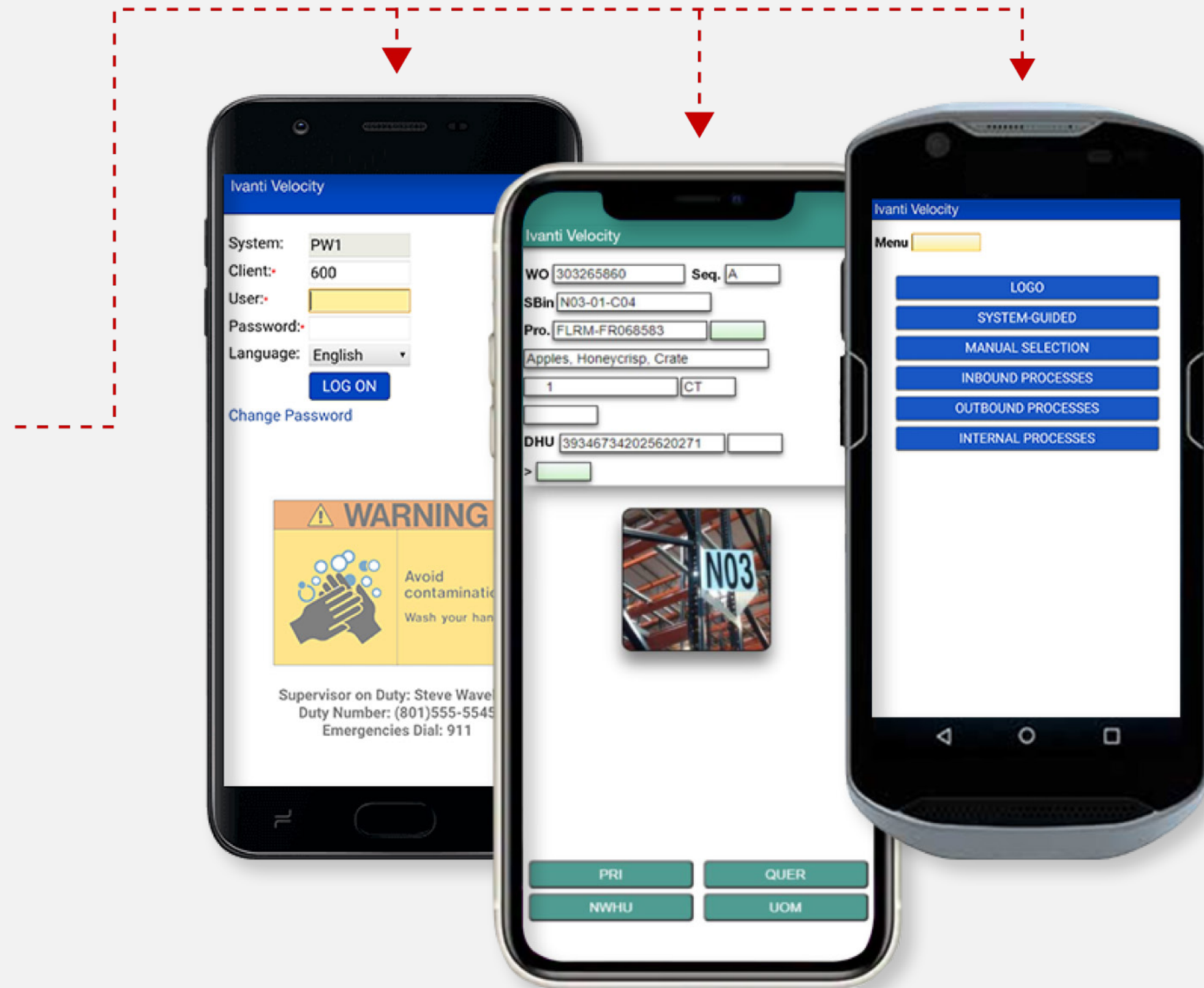
Almost all SAP workflow screens are generic, meaning they present ALL options to a worker or handler that may only need specific options at a certain step. This again leaves the handler struggling to remember exactly which menu option to select at a given step, and also again increases the likelihood of introducing errors—errors that cost time and money.

For these reasons and many more—including generic keyboards that only degrade productivity—huge gains can be realized from re-creating the UX on the barcode scanner at the point of entry for the material handlers. These gains have been proven to increase speed, reduce error rates, and even cut training time completely.

Velocity Web



Modernized Screens



To further facilitate productivity with new devices and processes, data capture must be streamlined. You don't want workers pinching and zooming due to page-fit issues, as this takes them away from the task at hand—whether they're working with a handheld barcode scanner, truck-mounted device, or tablet. What's more, many warehouses employ seasonal workers to manage peaks and troughs, often not operating in their primary language, and it's evident that warehouse digitization is at a tipping point, and could cause more problems than solutions.

For optimal productivity, businesses need accurate WMS integration to help ensure shipments come and go on time to maintain customer satisfaction.



Velocity Web has given our SAP ITsmobile users an excellent tool, solving the challenges around device screen sizes, resolution, and display of data. We are now quickly able to get our warehouse associates productive and get all of our warehouse processes up and running using Ivanti's Velocity Web.

– Nitin Miranda, Project Manager, UCT

The SAP EWM Edge

CREATING A MORE PRODUCTIVE MOBILE BARCODE UX

Solutions from Ivanti Wavelink fit seamlessly into SAP EWM, be it SAP Console or ITSmobile. With more than three decades of experience in enhancing warehouse operations on the barcode or data-entry devices, Ivanti Wavelink is the edge that SAP EWM implementations need to win.

On modern mobile barcode devices, Ivanti Velocity presents a more efficient and productive UX on SAP EWM Telnet (SAP Console) and ITSmobile (HTML) applications. It provides all the following and more:

- Changing the UX from a key-based interface to a touchscreen-friendly user experience
- Creating enhanced screens on Android, iOS, and Windows 10 mobile devices
- Removing unneeded screen items to keep material handlers on task
- It can even voice-enable SAP EWM workflows to make the entire experience voice input/output

Velocity & Speakeasy Voice



Sophisticated Automation and Integration

Ivanti Velocity is also able to customize SAP screens for users. This personalized formatting helps reduce redundant menu options, reducing scroll times and rescuing users from being overwhelmed with options. In a warehouse or factory setting, users may only need one or two choices. Paring down what's on screen helps focus attention, and prevents mistaken clicks that slow the picking process considerably. This is a particular USP, as many operatives don't like change. But with such an easy-to-use interface, they face no teething problems in their day-to-day operations. With the additional benefits of voice integration with Ivanti Speakeasy, which doesn't require training time to recognize different accents, dialects, or languages, Ivanti offers the tools to make your digitization achieve best-in-class status.

The move to modernize facilitates this even further, as Ivanti Velocity is much more customizable than Windows. This means businesses can choose to remove buttons that don't serve a purpose for the job at hand, making it easier to log on or make data entries by having the numeric or alphabetic keyboard appear when automatically needed, and highlighting certain buttons by increasing their size and color. This intuitive display minimizes training time while simultaneously improving pick rates.

With more than 10 million devices already running Ivanti Velocity and over 10,000 happy customers, Ivanti Velocity is able to help your switchover run seamlessly with minimal downtime or disruption, due to the fact it integrates with every WMS and offers bespoke or customized solutions.

This enhanced user experience and display can also help seasonal or temporary workers who may not be as familiar with what certain picks look like. With Ivanti's SAP integration, there is the opportunity to display additional pictures, to help operatives identify the correct item.

As a very basic example, if a box of oranges is selected to be shipped, an image of oranges can be displayed in addition to the item number and location in the warehouse. To do this, the Ivanti Velocity TE Client reads the article number from the SAP console, accesses another database where corresponding images are stored, and plays the corresponding image back to the end device. This is a huge advantage for users, and can be implemented in SAP at the client-side. This functionality works both ways—and can therefore help with documenting damaged goods—by enabling users to send and store a photo of the damage on the system.



In the case of J.J. Keller,

Ivanti helped reduce pick rates by half a second, leading to a return on investment within four months

IVANTI WAVELINK

Trust the Market Leader Trusted by SAP S/4 HANA

Since the inception of the barcode, Ivanti Velocity has been providing warehouse solutions to enterprises, taking their operations to the next level. Despite warehouses increasing in size and complexity, we make your operations easier thanks to our experience, expertise, and vast knowledge. We can help you save money, drive productivity, and reduce errors with our SAP integration, thanks to our fast and reliable software that delivers solutions simply not possible with other providers.

We are the only provider who is SAP Certified in SAP console and ITSmobile, so we can work with you to help fine-tune your picking operations. Whether you're using Terminal Emulation or web-based applications, or just looking for a more modern and innovative solution, the Ivanti Velocity framework delivers the needed technology to automate and achieve your warehouse of the future.

Ivanti Velocity and Ivanti Speakeasy

Contact us today to learn more about
SAP Certified Solutions with Ivanti

[REQUEST DEMO](#)

SAP Certified
Integration with SAP S/4HANA

ivanti.com/wavelink
206 274 4280
wavelink@ivanti.com

This document is provided strictly as a guide. No guarantees can be provided or expected. This document contains the confidential information and/or proprietary property of Ivanti, Inc. and its affiliates (referred to collectively as "Ivanti") and may not be disclosed or copied without prior written consent of Ivanti.

Ivanti retains the right to make changes to this document or related product specifications and descriptions, at any time, without notice. Ivanti makes no warranty for the use of this document and assumes no responsibility for any errors that can appear in the document, nor does it make a commitment to update the information contained herein. For the most current product information, please visit www.ivanti.com.

Copyright © 2020, Ivanti. All rights reserved. IVI-2450 12/20 TR/BB/DH

ivanti | Wavelink