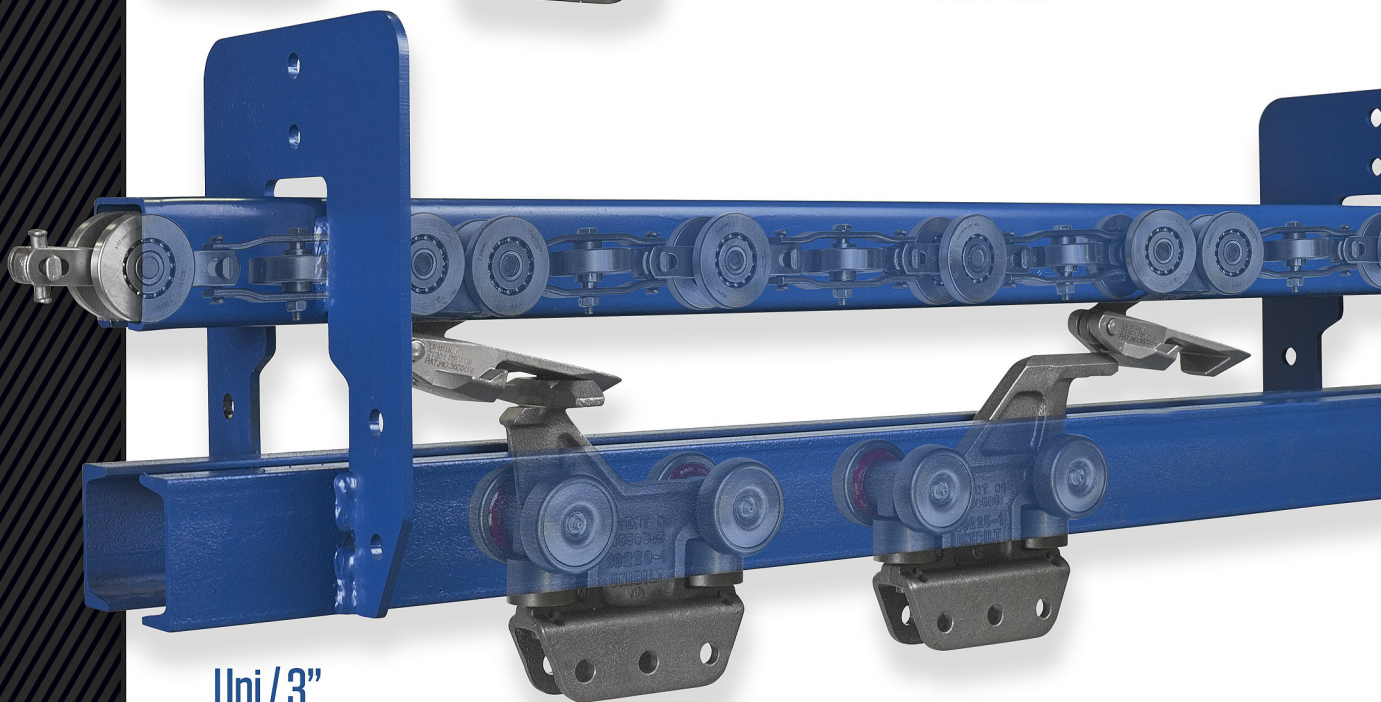


# UNIBILT®

## Power and Free Conveyors



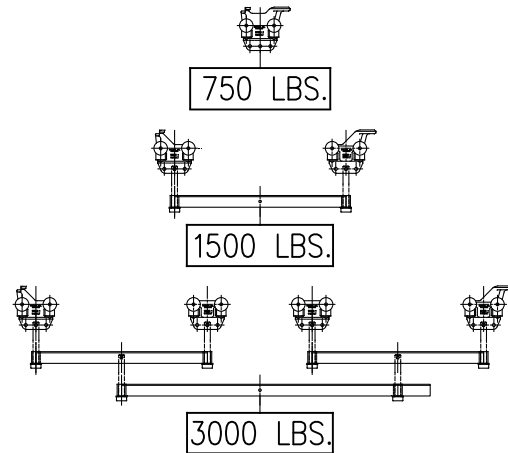
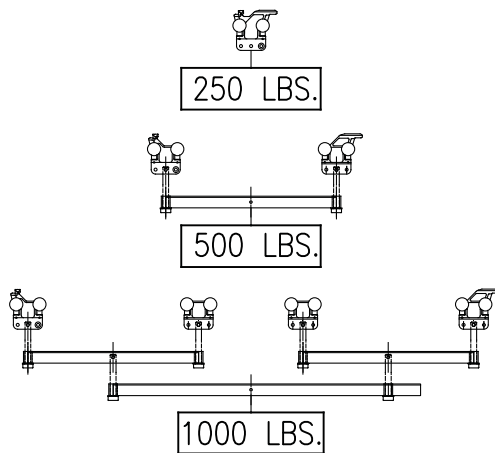
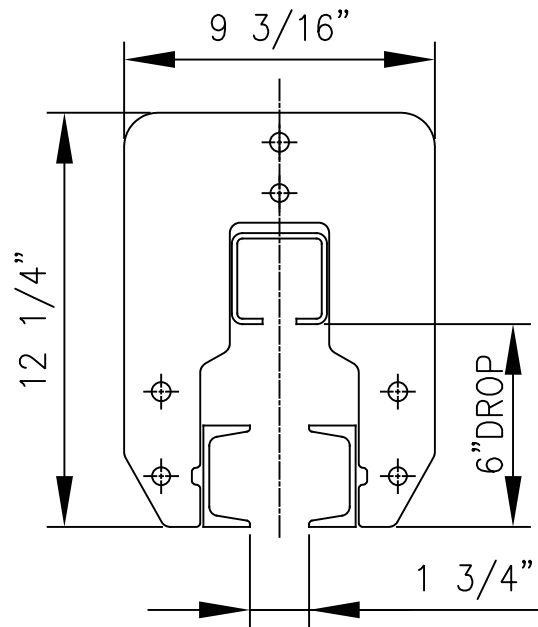
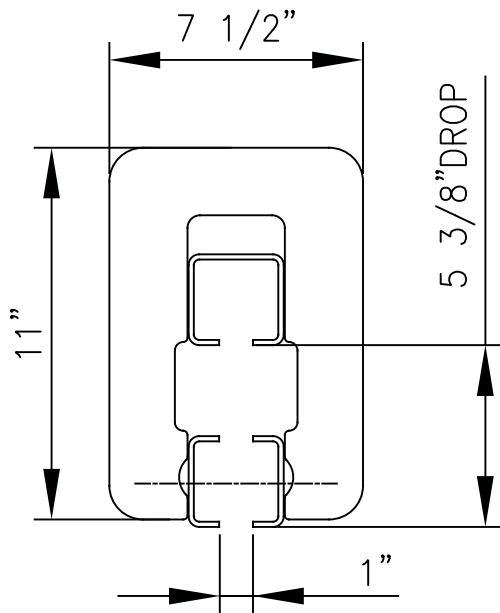
Uni / Uni



Uni / 3"

- Medium to high capacity enclosed track
- High wearability WebbAlloy II™ Steel
- Bolted and welded install formats
- Industry accepted standard for 50+ years

**PACLINE™**  
**OVERHEAD CONVEYORS**  
[WWW.PACLINE.COM](http://WWW.PACLINE.COM)



	<b>Uni / Uni</b>	<b>Uni / 3"</b>
<b>Max. Capacity (lbs.)</b>	250 lbs. / trolley	750 lbs. / trolley
<b>Maximum Drive Pull</b>	750 lbs.	750 lbs.
<b>Chain Breaking Load</b>	10,000 lbs.	10,000 lbs.
<b>Min. Chain Friction Co-efficient</b>	3.5%	3.5%
<b>Pusher Dog Pitch</b>	Typically 24",32",48"	Typically 24",32",48"
<b>Min. Horizontal Curve Radius</b>	24" radius	24" radius
<b>Min. Vertical Curve Radius</b>	36" radius	36" radius
<b>Max. Drive Speed</b>	60 FPM	60 FPM
<b>Max. Incline Angle</b>	Typically 45°	Typically 45°

**PACLINE**  
OVERHEAD CONVEYORS  
[WWW.PACLINE.COM](http://WWW.PACLINE.COM)

1-800-955-8860  
sales@pacline.com

PACLINE OVERHEAD CONVEYORS is a licensed **UNIBILT**® distributor/integrator.  
Unibilt® and Webb Alloy II™ are trademarks of Jervis B. Webb