

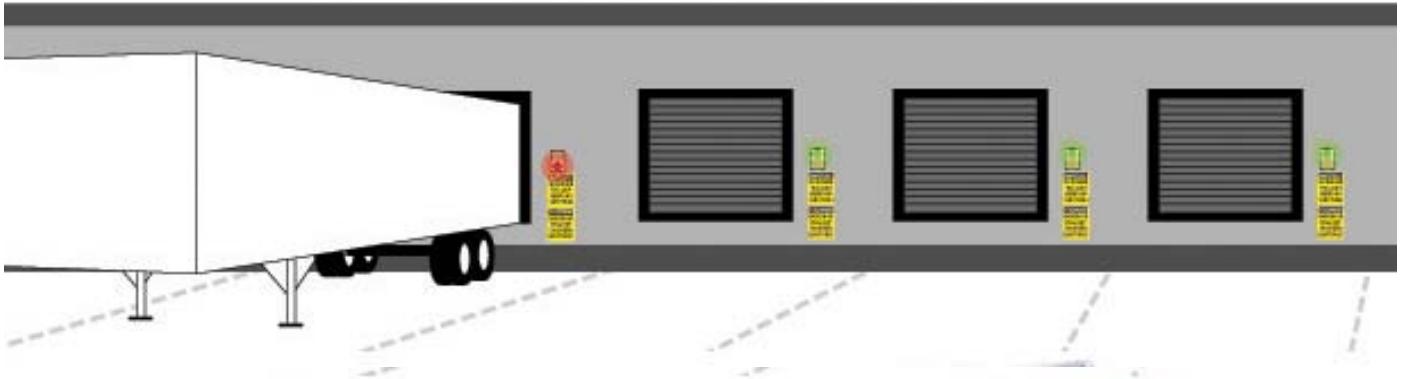
TDL - 1100 Series

Truck Service

SAFETY TRAFFIC SIGNAL DOCK LIGHT

DEMO UNITS AVAILABLE
UPON REQUEST

STOP & GO FOR LOADING & UNLOADING OPERATIONS OUTSIDE & INSIDE SAFETY

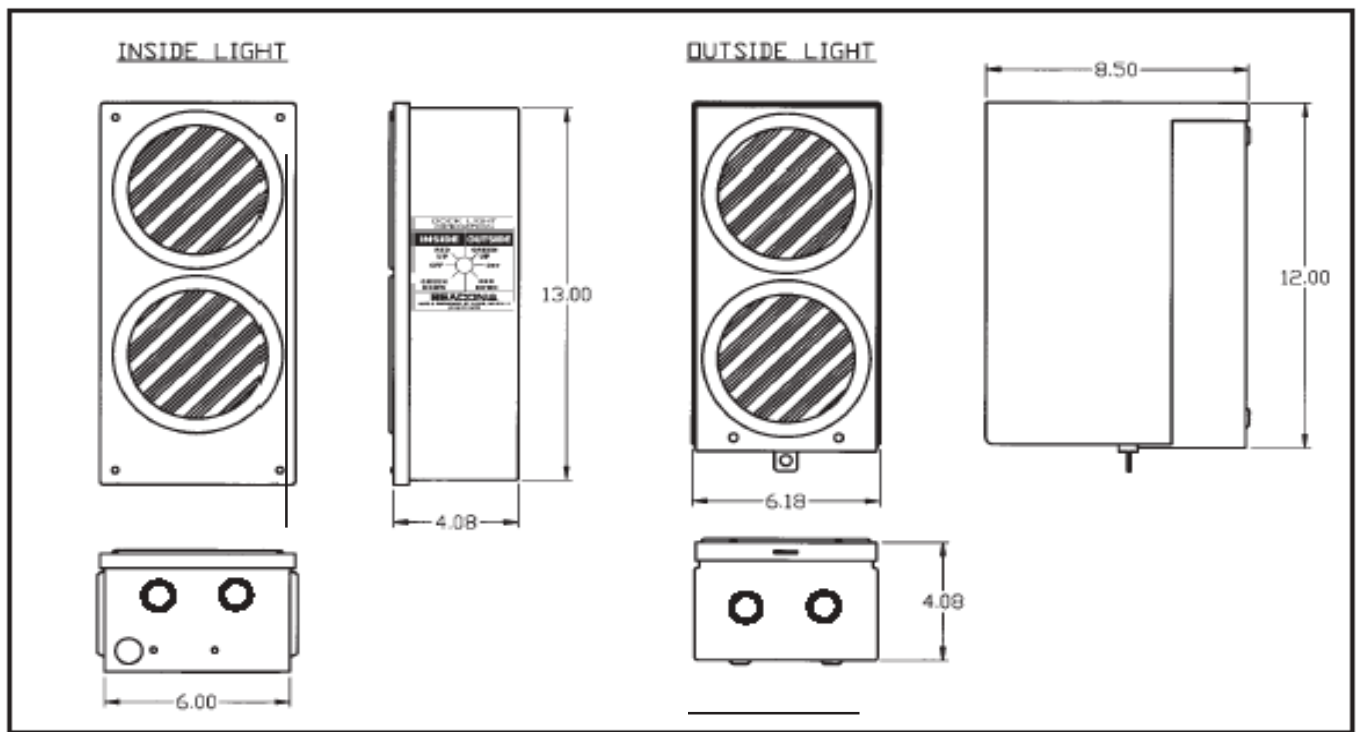


INSIDE SAFETY TRAFFIC SIGNAL DOCK LIGHT

BEACON



OUTSIDE SAFETY TRAFFIC SIGNAL DOCK LIGHT



- Easy Operation.
- Direct & Positive Communication between Truck Driver & Dock attendant.
- 10 Volt system (120V/10V stepdown).
- Solid State Flasher.
- 3 Way Toggle switch.
- Sealed lights.
- NEMA 3R Outside Enclosure Box.
- NEMA 1 Inside Enclosure Box.
- Wiring Instruction Included.

TDL-1100-A SERIES - MANUAL

Truck backs up to an outside flashing green traffic signal dock light. The inside traffic dock light is red. Dock attendant changes the light colors, using the toggle switch on the inside dock light, after truck has parked. The dock attendant changes the outside light to red and the inside light to green.

TDL-1100-A SERIES - AUTOMATIC

OPTION: Limit Switch installed in overhead door track. Traffic Signal Lights change when the overhead door raises or lowers. When the overhead door is closed the outside traffic dock light is green and the inside is red. When the overhead door is open the outside traffic dock light is red and the inside is green.

OPTIONAL DRIVE WARNING SIGNS FOR TRAFFIC DOCK LIGHT PACKAGE

Outside Signs

Inside Sign



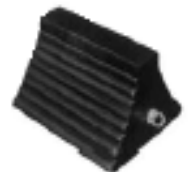
CONTROL PANEL



ACCESSORIES

WHEEL CHOCK

Model B68-9
8" W x 5 1/4" H x 9" L



LAMINATED DOCK BUMPERS WITH STEEL SIDES

Model BH-1014-0-107
Overall Size 10" x 14"
Rubber Surface 10" x 9" x 4 1/2"

MOLDED DOCK BUMPER

Model BR 4-12-13
13" W x 12" H x 4" D



Other sizes available upon request