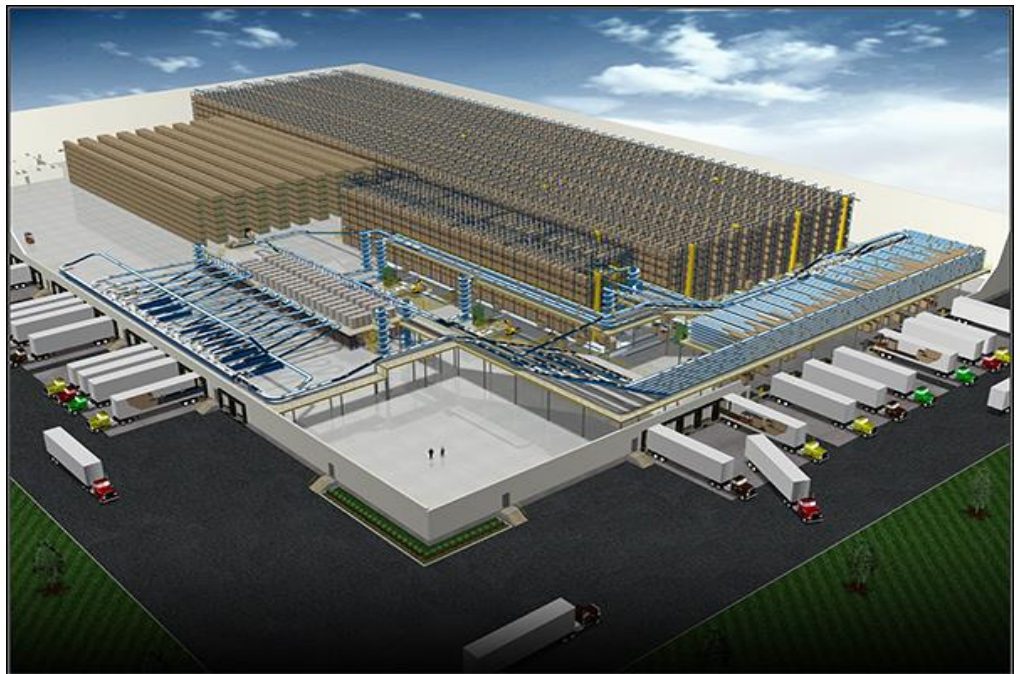


GARLOCK
SAFETY SYSTEMS

Pick Modules & Pallet Flow Modules

Safety Solutions for New & Existing Rack Systems



Garlock Safety Systems
2601 Niagara Lane North
Plymouth, MN 55447

Tel: 877.791.4446
Email: info@garlocksafety.com

Mark McLain
National Sales Manager
Material Handling Safety

Cell: 678-920-3062
Email: mmclain@garlockequip.com



THE INDUSTRY THAT MAKES THE SUPPLY CHAIN WORK®

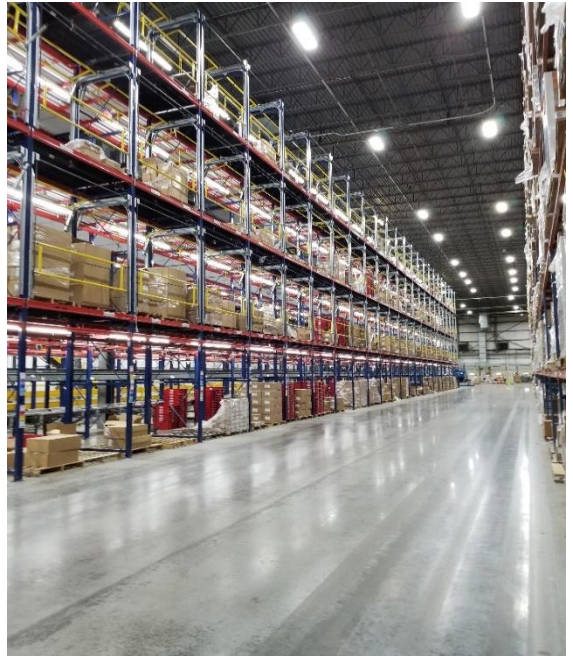


ROLLBACK GATE SYSTEMS FOR PICK MODULES

OSHA Compliant and designed to Integrate into any Rack System, New or Existing.

(2) Way Roll Over Gate System, when one side is open the other is always closed.

This design helps prevent workers picking product from exposing themselves to an “unprotected edge” at height!



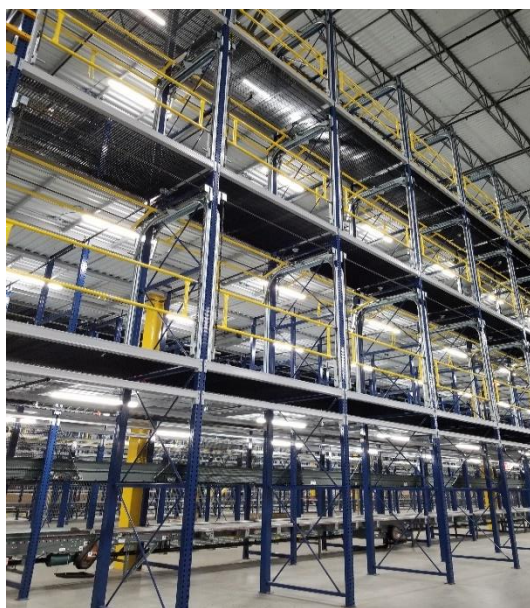
Gates are custom designed to the rack and mounted on the inside upright member. Systems can be custom designed for small, standard and very large bays

Our Engineers collaborate with yours to create a perfect “fit & finish”! Our Value Add to you is Engineering time and support throughout this process is at no cost to you!

ROLLBACK GATE FOR PALLET FLOW PICK MODULES

Pallet Flow Modules have a variety of additional safety concerns. The type & roller placement, bay width, number of pallet positions, returns lanes and more that determine the exact design solution needs.

We have 1000's of operational installations and satisfied customers.



RollBack Gates are designed for worker productivity & safety in Pallet Flow Modules.

RBG's are the ultimate solution to Double Width Bays with or without Return Lanes.

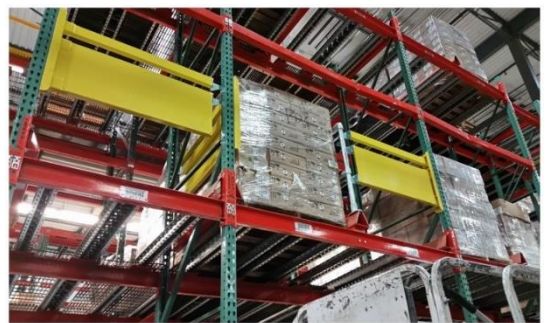
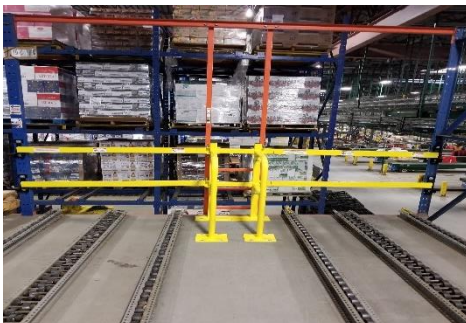
Easy to install, operate and always OSHA Compliant.

Next we will address standard size single width Pallet Flow Bays Solutions with a more traditionally solution system.

SINGLE OR DOUBLE WIDTH PALLET FLOW BAYS SOLUTIONS

Single width bays like the one to the right are widely used & less complicated with a variety of options available.

Options such as the number of “arm’s” or choosing “panels” or a combo of both.



Double width bays have a unique challenge. How to best keep a worker from an exposed fall opening or gap? The Gate arms must maintain the 200lbs load force requirement in the event of a fall. AND...

Rack System uprights maybe exposed to excessive torsion if the Gate is not tested for compliance. Talk with us. We are here to advise you on your best options for both Safety & Rack System integrity.

Garlock Safety Systems
2601 Niagara Lane North
Plymouth, MN 55447

Tel: 877.791.4446
Email: info@garlocksafety.com

Mark McLain
National Sales Manager
Material Handling Safety

Cell: 678-920-3062
Email: mmclain@garlockequip.com