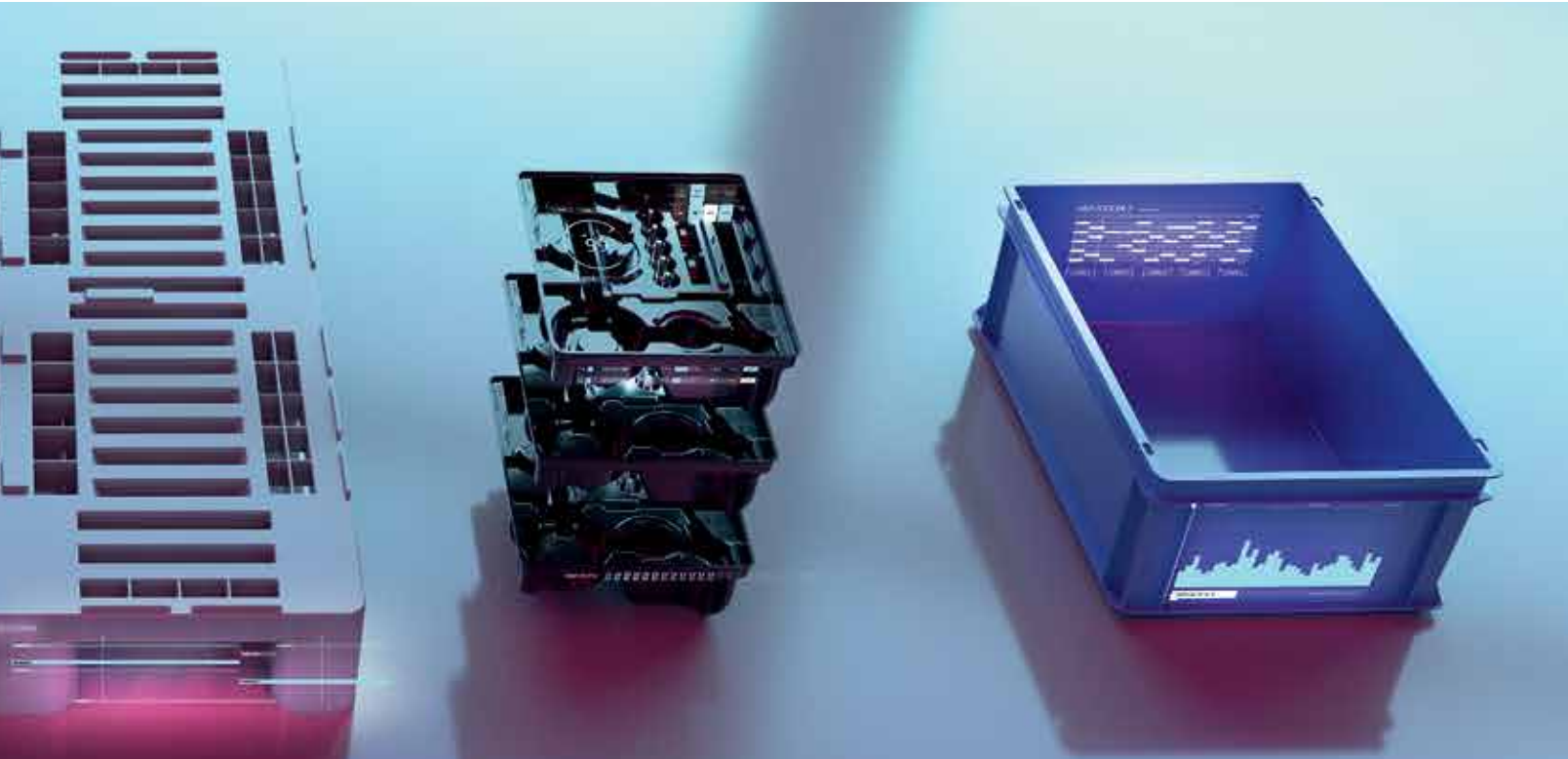


*clever – creative – sustainable – relevant*



# **NORTH AMERICAN CATALOG**

*Solutions for Material Handling, Storage and Transport*

<i>The Utz Group</i>	4
<hr/>	
<i>Individual Customer Solutions</i>	18
Individual Solutions	20
Homeshopping	22
Stack Nest Totes	23
<hr/>	
<i>Component Holders</i>	24
Thermoformed Component Holders	26
Injection Molded Component Holders	38
<hr/>	
<i>Stacking Containers</i>	40
EUROTEC	40
SLC	48
RAKO	58
<hr/>	
<i>Electrostatic Discharge Products ESD</i>	68
<hr/>	
<i>Bulk Containers</i>	78
KLAPA	82
GLT	83
<hr/>	
<i>Pallets</i>	84
<hr/>	
<i>Space Savings</i>	92
Nestable Containers	94
Collapsible Containers	96
Foldable Containers	98
<hr/>	
<i>General Information</i>	102
<hr/>	



Company founder Georg Utz  
1916 – 1988

## Welcome to Utz.

### From Georg Utz to the Utz Group

Georg Utz founded the company in 1947. He had the energy, the perseverance and the assertiveness to turn his visions of future possible uses of plastic material into reality. He recognized the diverse usability of plastic storage and transport containers in logistics at an early stage. His ideas still apply today.

### Utz today

Today, the Utz Group operates under a holding company. Subsidiaries and agencies allow for customer proximity around the world.

### The future of Utz

Our vision is still to be the leading manufacturer of containers, pallets, work piece carriers and technical parts from recyclable plastic.

We look forward to creative, innovative cooperation en route to this accomplishment.



Board of Directors of the Georg Utz Holding AG



Axel Ritzberger

Dear reader,

On behalf of the employees of the Utz Group, I would like to thank you for taking the time to read our catalog.

No matter where you are in the world as you read these lines: There are Utz employees who can quickly be in contact with you, to advise you about the latest solutions in the Materials Handling field.

Or would you like to pay us a visit immediately on the Internet?

At [www.utzgroup.com](http://www.utzgroup.com) we can provide up to date information on products, technical matters, attendance at exhibitions and everything you would like to know about the Utz Group.

We look forward to receiving your enquiries at [info.ch@utzgroup.com](mailto:info.ch@utzgroup.com) or your visit to an exhibition.

Axel Ritzberger  
CEO Georg Utz Holding AG, Schweiz



Michael Chiado

Packaging is the only common element of the logistic process that is physically present in every step of your value chain. Packaging has to meet requirements for storage, transport, in-house materials handling, as well as provide protection in each of these stages.

With the influence of flexible manufacturing, the increase in product flexibility, rising quality requirements and growing demands of customers; it is easy to see the difficult challenges facing logistics professionals today.

At Georg Utz, Inc., we understand the challenges you are facing and we will work with you to arrive at the optimal solution for your processes. If you have a materials handling problem, we have the solution.

Please do not hesitate to contact us to discuss your materials handling requirements.

Michael Chiado  
President of Americas Georg Utz, Inc., U.S.A.



8 locations on 3 continents

**George Utz Ltd.**  
 Grange Close  
 Clover Nook Industrial Estate  
 DE55 4QT Alfreton, Derbyshire  
 UK  
 Phone: +44 1773 543 170  
 E-Mail: info.uk@utzgroup.com

**Georg Utz GmbH**  
 Nordring 67  
 48465 Schüttorf  
 Deutschland  
 Phone: +49 5923 805 0  
 E-Mail: info.de@utzgroup.com

**Georg Utz Sp.z o.o.**  
 ul Nowowiejska 34  
 55-080 Katy Wroclawskie  
 Polen  
 Phone: +48 713 16 77 60  
 E-Mail: info.pl@utzgroup.com

**Georg Utz Inc.**  
 14000 North 250 West  
 46124 Edinburgh, IN  
 USA  
 Phone: +1 812 526 2240  
 E-Mail: info.us@utzgroup.com

**Georg Utz de México S. de R.L. de C.V.**  
 Circuito Corral de Piedras No. 17,  
 Polígono Empresarial  
 37888 San Miguel de Allende  
 Phone: +52 415 120 5384  
 E-Mail: info.us@utzgroup.com

**Georg Utz Sarl**  
 Parc d'Activités les 2B  
 405 Chemin des Vignes  
 01360 Bressolles  
 Frankreich  
 Phone: +33 4 37 85 83 00  
 E-Mail: info.fr@utzgroup.com

**Georg Utz AG**  
 Au graben 2-4  
 5620 Bremgarten  
 Schweiz  
 Phone: +41 56 648 77 11  
 E-Mail: info.ch@utzgroup.com

**Georg Utz Materials Handling (Suzhou) Co., Ltd.**  
 No. 698 Jianlin Road, SND  
 215151 Suzhou City, Jiangsu Province  
 China  
 Phone: +86 512 6616 0227  
 E-Mail: info.cn@utzgroup.com

*World-wide agents in:*  
 Australia | Austria | Belgium | Czech Republic | Denmark | Finland  
 Greece | Hong Kong | Hungary | India | Israel | Italy | Jordan | Netherlands  
 New Zealand | Norway | Phillipines | Portugal | Romania | Russia | Singapore  
 Slovakia | Slovenia | South Africa | Spain | Sweden | Thailand | Turkey



*Georg Utz, Inc.*

Is a manufacturer of storage and transport containers, pallets, component holders and technical parts from recyclable plastic.

Our production site in Edinburg, Indiana is the American subsidiary of the Georg Utz Holding Company, which has its head office in Bremgarten, Switzerland.

Georg Utz Inc. is a supplier of a very broad product portfolio. We manufacture two primary processes: Thermoforming and Injection Molding. As containers and component holders are frequently combined, these production options offer special advantages for the customer. One focus of our activity therefore lies on the solution specific tasks.

*You can find us here.*



*Service and Support*

Our competent sales team will advise you and analyze your requirements to develop a fast, practical and simple solution.



*Project Management*

Our project managers handle projects from their initial idea to their realization.





Quality management  
ISO 9001:2015

The Utz Group has a comprehensive Quality Management System that spans across the entire group of companies. This is a constant and customized requirement for all of the Utz product line worldwide.

From the idea to the product, all under one roof



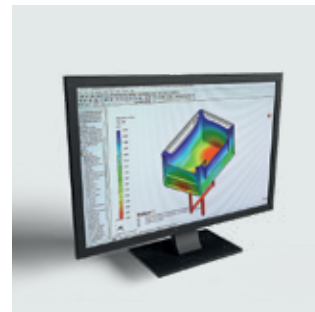
*The Idea*

All requirements related to the planned product are summarized in specifications within the frame-work of an extensive checklist.



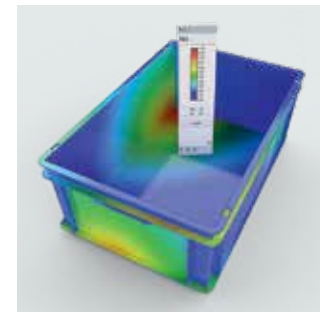
*3D Display*

Technical drawings from the basis of further development. This results in three-dimensional displays which enable an initial introduction of the future product.



*Mold Flow Analysis*

Mold flow analysis provides information about the flow behavior of filling the mold. It allows tool optimization before the build.



*FEA Analysis*

With the aid of the FEA, virtual components can be calculated on the computer and deformations and stresses under the influence of force can be simulated.



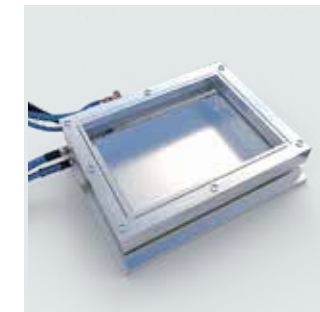
*Rapid Prototyping*

Within a very short time, details of the planned product can be realized as a rapid prototype based on the technical drawing.



*Model Production*

In order to check whether all requirements have been met on the basis of a sample, we also can produce a model of the product at the customer's request.



*Tool Construction*

Work on the tool is done by our experts in the tool making department.



*Series Production*

Serial production can start once the tool has been approved by the customer after sampling.



*Thermoforming Process*

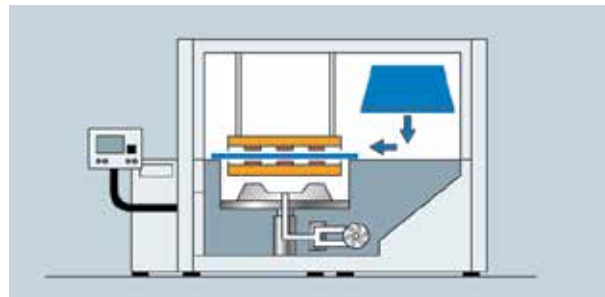
Thermoforming is a manufacturing process which reforms thermoplastic synthetics. The resulting load carriers are usually called component holders. Component holders are able to perfectly incorporate the stored products into so-called cavities.

*The Raw Material*

Thermoforming is a process where thermoplastic sheets are heated to a pliable forming temperature, formed to a specific shape in a mold and trimmed to create a specific part.

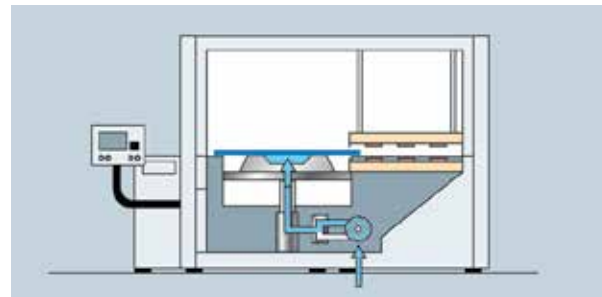
*The Tool*

To manufacture thermoformed component holders, a plastic plate is heated and pulled across a tool through the production of a vacuum. The plastic plate is clamped between the tool and a heating device.



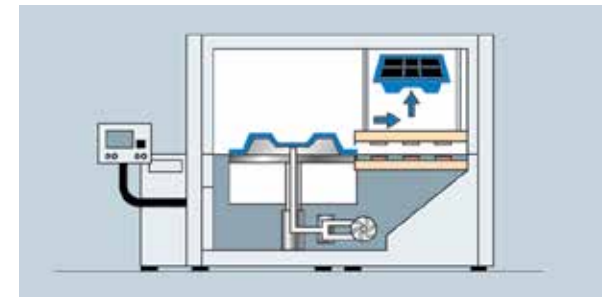
1. *Heating process*

A sheet or film consisting of thermoplastic material is tightened in a center frame and heated with a suitable heat source up to and including the plastic area.



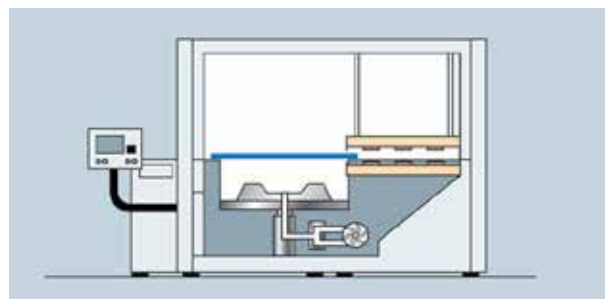
3. *Formation: Creating excess pressure*

The base sheet and tool are lifted. A pump creates excess pressure (pre-blowing).



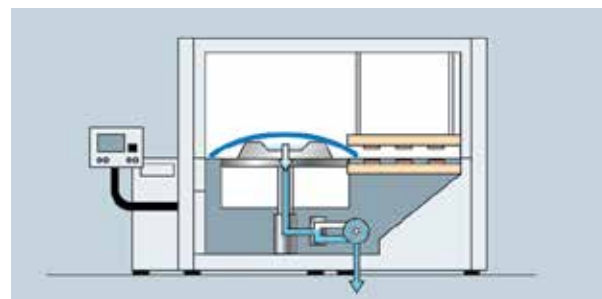
5. *Finished!*

The material is allowed to cool. Fans and fine water mist may be used to help cool the part evenly. After the part is cool, it is released from the mold with air assist.



2. *Start of formation*

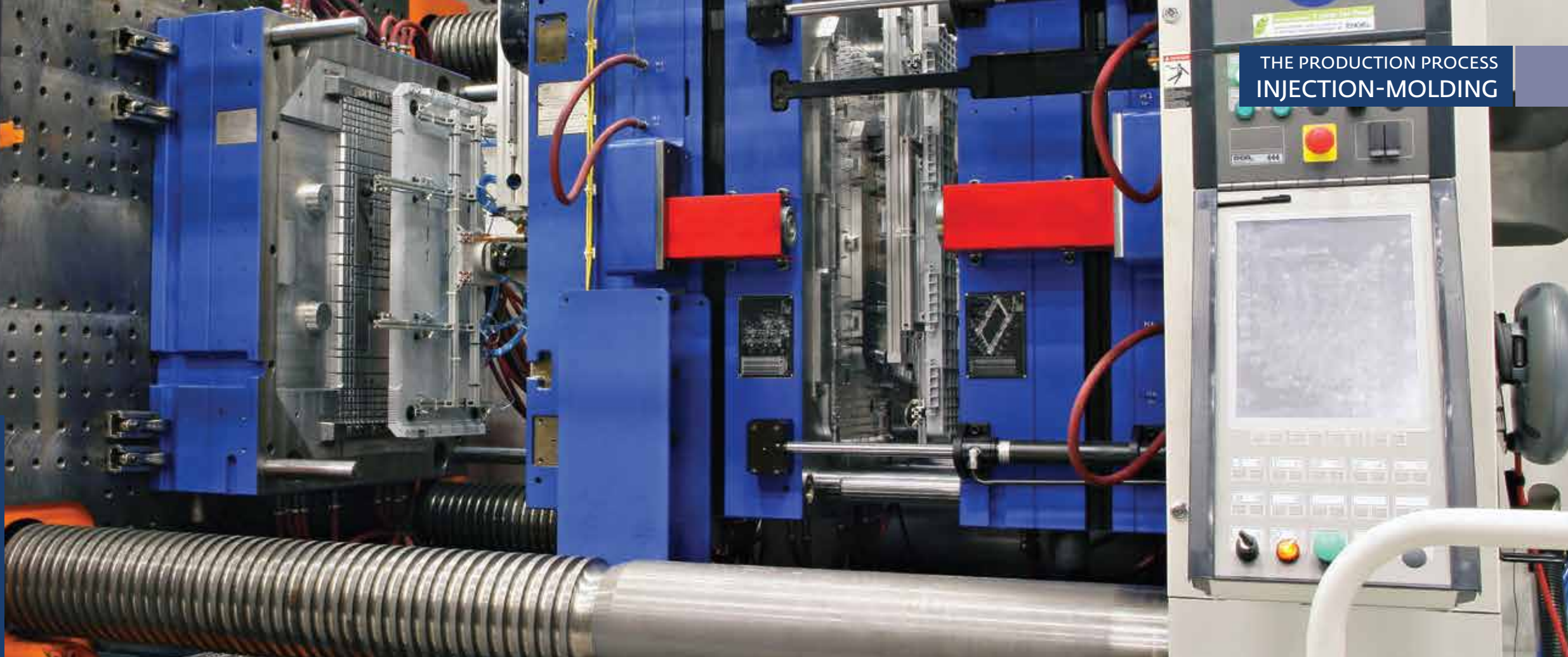
After the material has reached the predetermined temperature, the heaters are removed.



4. *Formation: Creating a vacuum*

The heated sheet is pre-stretched by air pressure and the forming tool is driven to the pre-stretched sheet. The air between the tool and the sheet is vacuumed.





*Injection-Molding*

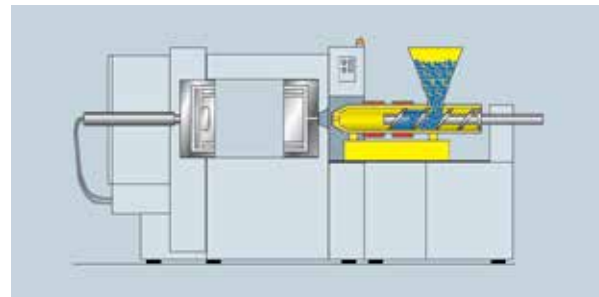
Plastic storage and transport containers or pallets are usually injection-molded.

*The Raw Material*

Pellets of resin material are the initial requirement to manufacture plastic containers. The pellets are stored in large silos, from where they are fed into injection-molding machines. These pellets are often tinted to meet customer color preference needs.

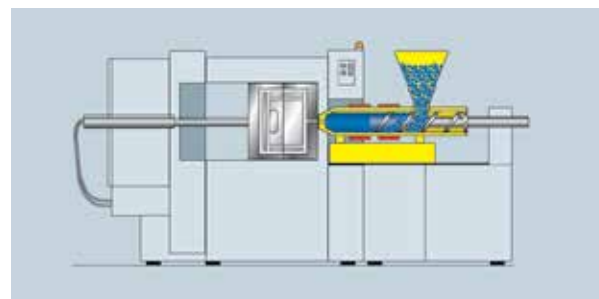
*The Tool*

Tool design and production was the starting point for Georg Utz and remains a core competency today. Our ability to produce high quality, flexible, state-of-the-art tooling allows us to meet the special requirements of our customers.



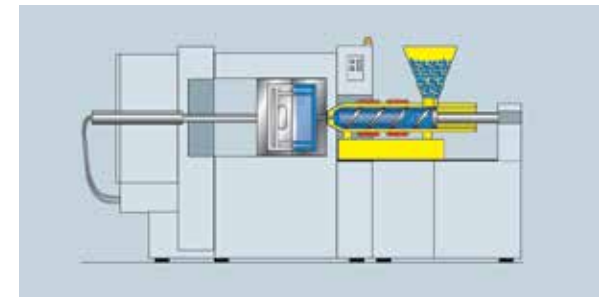
1. *Preparing the injection process*

The heated barrel is charged from a hopper feed with material in pellet form. In the heated barrel the thermoplastic is melted.



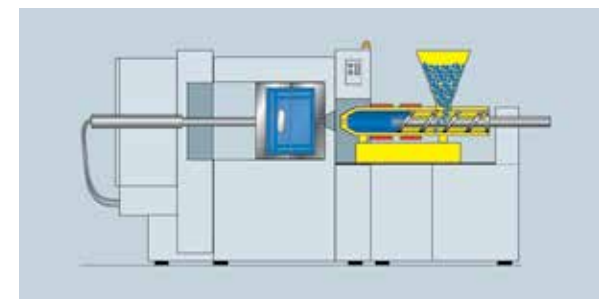
2. *The injection process begins*

The mold is closed within the platen arrangement and clamped using necessary force to hold the mold closed during the plastic injection cycle.



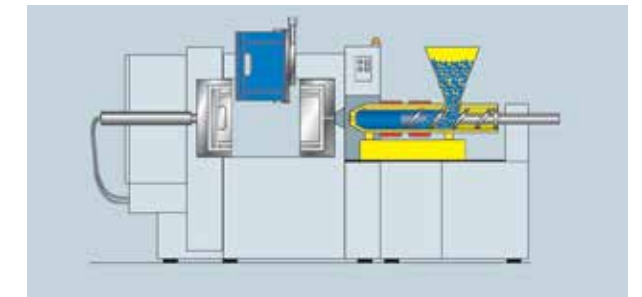
3. *The injection process*

The screw is driven forward under hydraulic pressure to discharge the molten plastic out of the barrel through the injection nozzle into the cavities in the molding tool itself.



4. *Holding pressure and cooling*

The screw is held in the forward position and a "holding" pressure is maintained on the solidifying material within the mold. Once the hold pressure phase has been terminated the mold must be closed for a set period of cooling time. During the cooling phase, the barrel is recharged with material for the next molding cycle.



5. *Finished!*

When the cooling phase is complete the mold is opened and the part is removed with a robot.





### Service around the Container

#### Labels and Custom Printing

- Hot Stamps
- Barcodes
- RFID Tags
- Inmold Labeling

#### Welding

- Vibration Welding
- Spot Welding
- Hot Plate Welding

#### Other Customization Options

- Cut and Weld Parts
- Die Cutting
- Drilling
- Milling
- Riveting
- Custom Coatings
- Belts
- Label Holders
- Handles
- Dividers
- Foam Inserts

### Recycling and UIC®

#### Recycling and Utz

Utz produces hundreds of thousands of new plastic boxes every year. Where do the load carriers of the previous year end up when there is such a continuous high demand? The positive answer is ... in continuous use!

What if the plastic containers or pallets have to be discarded? Utz takes these load carriers back! The containers are collected and stored in groups of identical material in the Utz Recycling Center, then moved to a company-owned compounder, in which the granulate is processed for reuse.

#### Utz and myclimate

We have partnered with myclimate to further our efforts toward climate protection. You can learn more about our partnership here:



#### Utz Industrial Compound UIC®

In its physical properties, the processed and prepared material is comparable to new material. Standard material properties are tested and documented, so that the former plastic container can be further processed following this "revitalizing treatment".

This Utz-specific alternative to the continuous production of new material from finite resources is therefore logically offered as Utz Industrial Compound (UIC®)

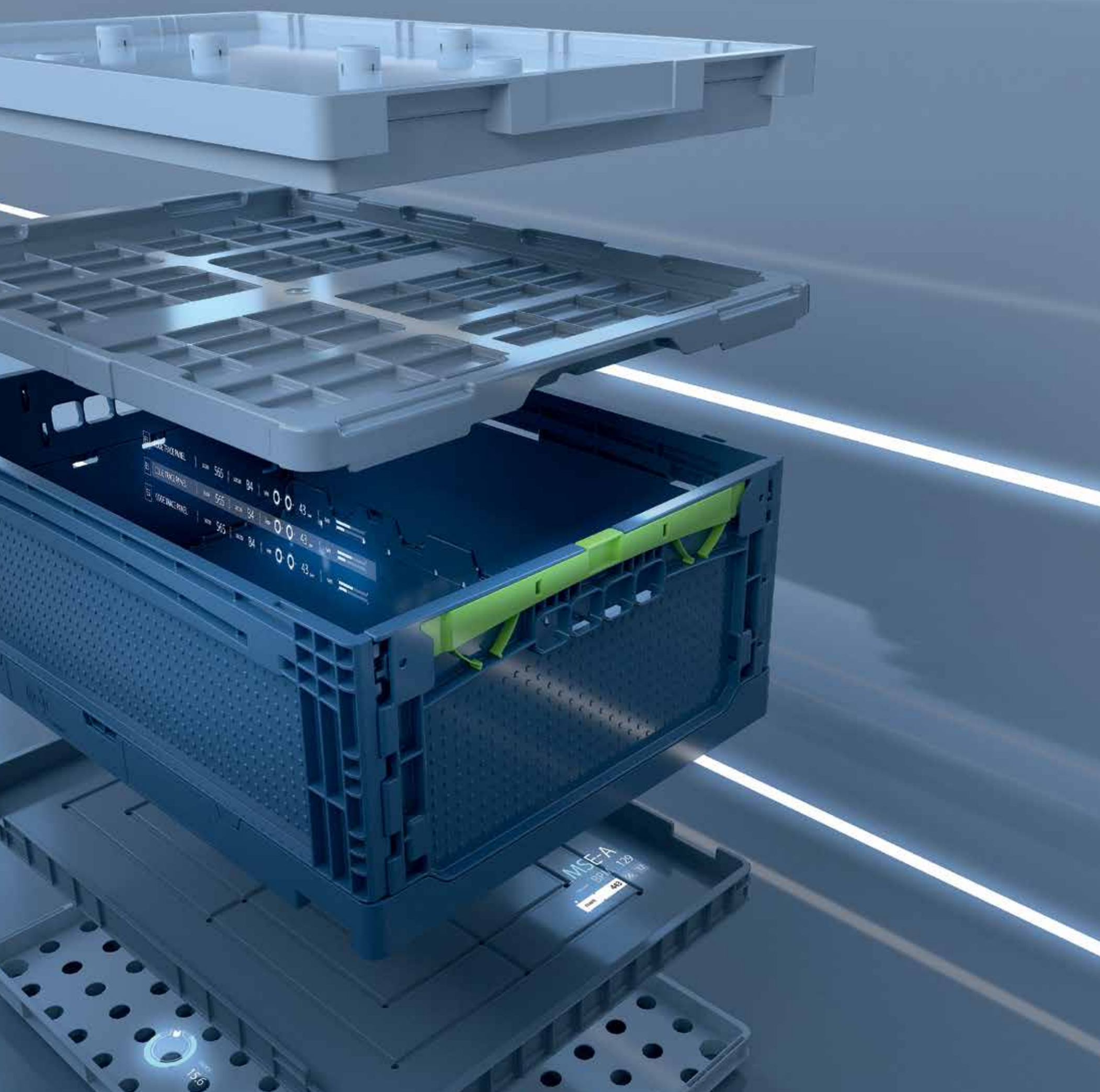
UIC® is a raw plastics material with documented properties and in the usual Utz quality.

### Utz is ISO certified:

ISO 9001:2015







# Individual Customer Solutions

- 20 | Individual Solutions
- 22 | Homeshopping
- 23 | Stack Nest Totes



## No job like another

*A solution for every task*

Often project requirements can be met with modification of a standard container. However, they often require new ideas and solutions.

### *AutoStore*

Special containers offered by AutoStore for an automated storage system with grooves at the short and long walls for compartment dividers.



### *Stacking container for Automation*

Container designed for automation and conveyor systems. Grooves injected into the internal walls are able to incorporate dividers.



### *Automotive*

High quality ball bearings of various sizes are transported in this reusable container. Individually adjustable eccentric elements are used to fit the ball bearings securely into the container.



### *Perfect Pick ASRS*

System specific design with various heights and reconfigurable dividers to meet a wide range of customer needs.

### *Medical Device Automation Tray*

Transport for medical device components. Trays serve as transport vehicle and automation interface at component manufacturing and device assembly.



### *OSR – Tray and Bins*

Tray and bin system provides transport tray with removable bin of various heights and sizes.





### Homeshopping with sophisticated containers

Plastic containers for picking and transport

Home shopping in the USA is becoming part of everyday life. A key element in picking in the warehouse and transporting to the customer or back to the warehouse is a container optimally adapted to the logistical concept. Although every company involved in homeshopping has an individual approach to solving problems, many nestable keepers are used.

These tapered containers are nested together when empty, so that up to 70% space savings in the transport of the containers is possible. The upper edge of the containers are designed with notches, in which up to three shopping bags can be hung. In the shopping bags, the online orders are collected, which are then handed over to the customer at the house. The empty containers are then sent back to warehouse.



#### Separation for shopping bags

The notches in the upper edge allow placement for up to 3 shopping bags.



### Stack Nest Totes

Totes for Any Industry

After listening to your feedback, the newly designed Utz family of stack nest totes are designed to be incredibly flexible. Made from our quality polypropylene and offering options such as a flat base, shell handles, and flat surfaces for labels, the stack nest is as versatile as you need it to be. Additionally, with 180-degree stack nest capability, you can save space in your warehouse when they're not in use. You can also stack these totes up to five high for even more agile application.

#### Shell Handles

- Ergonomic shell handles make for easy carrying

#### High-Quality Polypropylene (PP)

- Durable, high quality PP increases longevity and functionality

#### Label Application

- Flat surfaces for labels make it easy to match to your automation system

#### Base Configuration

- Engineered flat base for improved base deflection and flatness when loaded



### 600 x 400 x 340 mm

23.6 x 15.7 x 13.4 in

Inner dimension: 482 x 336 x 334 mm / 19.0 x 13.2 x 13.1 in

Weight: 2.0 kg / 4.4 lb

Capacity: 54.0 liters / 1.9 ft<sup>3</sup>

Base	Usable height
flat	322 mm / 12.6 in

### 600 x 400 x 350 mm

23.6 x 15.7 x 13.8 in

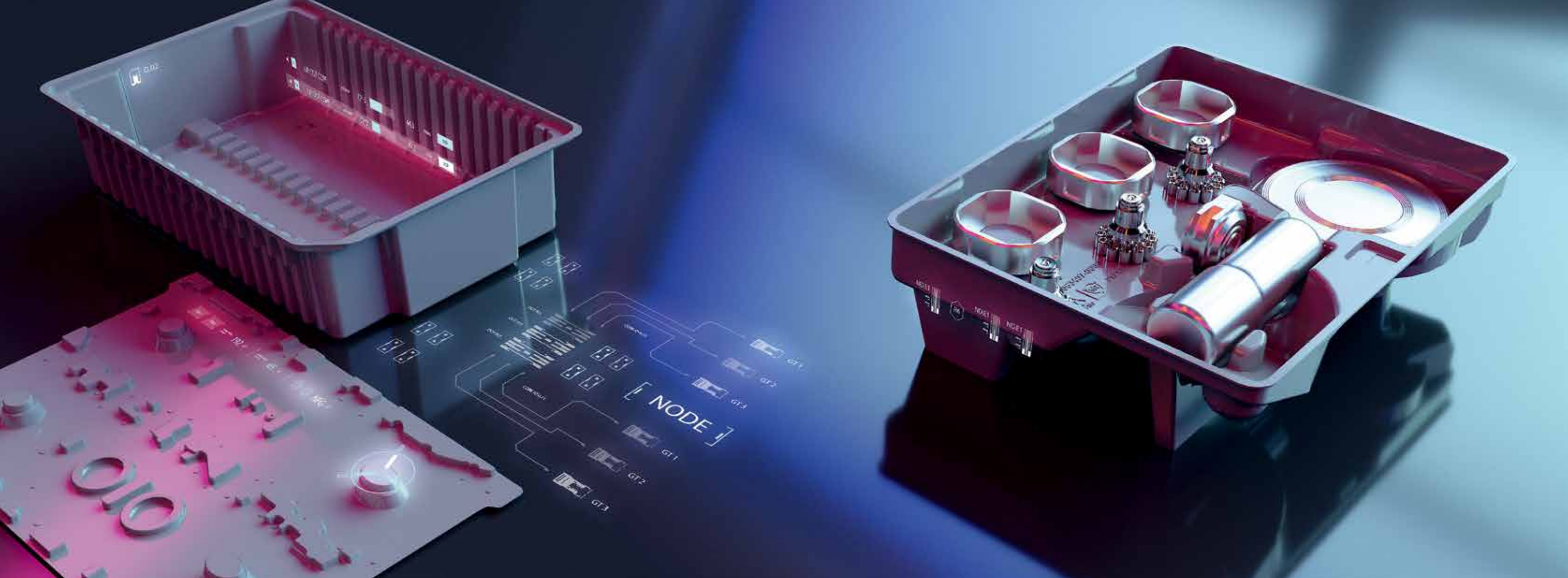
Inner dimension: 490 x 333 x 338 mm / 19.3 x 13.1 x 13.3 in

Weight: 2.3 kg / 5.1 lb

Capacity: 55.2 liters / 1.9 ft<sup>3</sup>

Base	Usable height
flat	325 mm / 12.8 in





## Component Holders

- 26 | Thermoformed
- 32 | Thin Wall
- 33 | Foam
- 34 | Component Holders as Inserts
- 36 | Options
- 38 | Injection Molded Component Holders

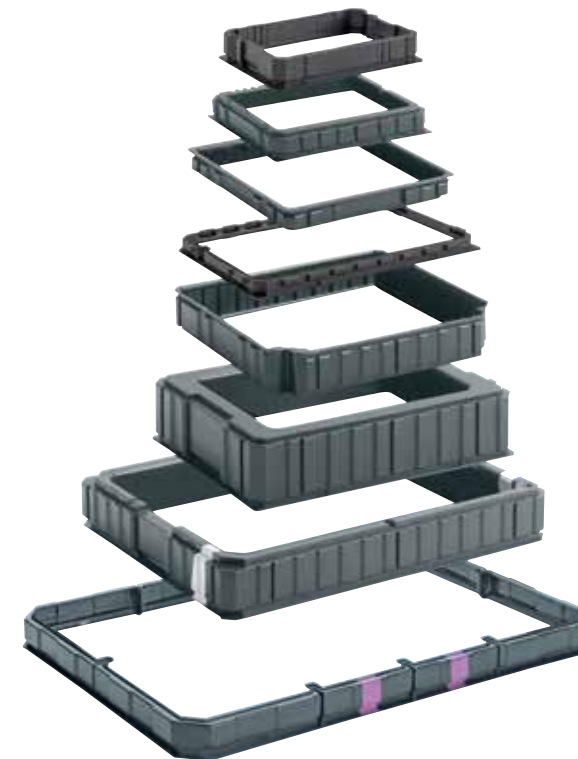


*Trays with a precise fit*

Thermoforming is a manufacturing process for forming thermoplastics synthetics. The resulting load carriers are called component holders. Component holders are able to perfectly incorporate products. There are stackable and rotary stackable component holders consisting of frame tools or as intermediate layers.

*Stackable component trays from a frame tool*

An individual insert tool is developed for the product being packaged and is fitted into a standardized frame tool. This way the same frame can be reused as often as required and keeps tooling cost to a minimum.



**The principle of a frame tool**

A frame tool refers to a style of tooling which utilizes a standard footprint with a modifiable insert. The insert can be customized to fit the part to be transported. This creates efficiency and flexibility for future part shapes and sizes.

**Thermoformed Frame Trays  
Utz Standard Sizes**

Footprint
12 x 16 in / 300 x 400 mm
15 x 12 in / 381 x 305 mm
16 x 12 in / 400 x 300 mm
24 x 15 in / 609 x 381 mm
24 x 16 in / 600 x 400 mm
24 x 20 in / 600 x 500 mm
24 x 22 in / 609 x 559 mm
32 x 24 in / 800 x 600 mm
40 x 24 in / 1000 x 600 mm
48 x 23 in / 1220 x 570 mm

**Frame Tools & Automation**

Automation is becoming increasingly more important in manufacturing. Current packaging solutions are difficult to convey and don't always have the necessary features to interact precisely with robotics. Unfortunately, a new line of fully customized containers can cost a supplier 10's of thousands of dollars. Therefore, Utz created a frame tool with a customizable insert in multiple heights. You get the production impact of a specialized container at a fraction of the cost.



## Thermoform materials

Material: ABS  
 Impact strength: Very Good  
 Abrasion: Good  
 Automated handling: Excellent  
 Temperature resistance: -4° to +175° F

Material: ABS TPU  
 Impact strength: Good  
 Abrasion: Good  
 Automated handling: Excellent  
 Temperature resistance: +17 to +170° F

Material: PE  
 Impact strength: Excellent  
 Abrasion: Excellent  
 Automated handling: Good  
 Temperature resistance: -50° to +175° F

Material: PETG  
 Impact strength: Good  
 Abrasion: Good  
 Automated handling: Excellent  
 Temperature resistance: -50° to +225° F

Material: PP Foam  
 Impact strength: Good  
 Abrasion: Excellent  
 Automated handling: Fair  
 Temperature resistance: +32° to +225° F

Material: PSEL  
 Impact strength: Good  
 Abrasion: Good  
 Automated handling: Excellent  
 Temperature resistance: -4° to +140° F



*Stackable trays*

Component trays can be designed to be stacked on top of each other resulting in more products to be stored on the same footprint. Fragile components stored in stacked component trays are protected from dust and dirt.



## High efficiency stackable carriers

Stackable component trays with stand-offs for gears with different diameters.



Stackable component trays made out of electro-conductive polystyrene.



Stackable component trays with recessed handles.



Stackable component trays with color stripe for visual identification of contents.



Stackable component trays for pharmaceutical use with optional lid.



## Stackable- nestable

Component trays can be designed to be stacked on top of each other resulting in more products to be stored on the same footprint. Fragile components stored in stacked component trays are protected from dust and dirt.



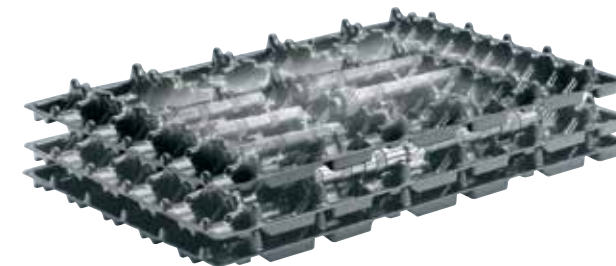
In the stacked position, loads are transferred from tray to tray through the stacking feature.



Trays in the nested position when empty.

## Interlayer trays

Cavities on top of the interlayer component tray are designed for the part it is to carry. The bottom side of the tray is then designed so that the tray will interface with the parts below. The upper tray transfers loads through the appropriate part surface below.



Interlayer trays with parts in lying position. Parts are held securely in place with detailed features on upper and lower trays.



Interlayer trays with an angled positioning of the parts to maximize the number of parts per tray.



### Blister - Thin Wall Component Holders for short term use

Blister or Thin Walls are thermoformed component holders consisting of thin material which is predominately used on a short term basis.



*Stackable Blister*  
With anti-twist



As an insert in a standard tote.



*Nestable Blister*

Stackable over parts being used.

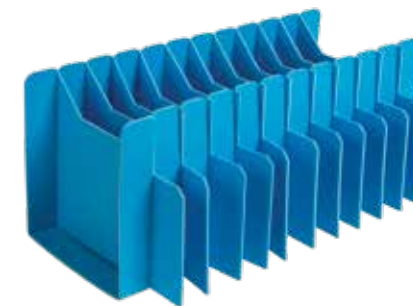


### Foam used as alternative material for Component Holders

Expanded polypropylene foam can be used in lightweight and sensitive surface applications.



Foam lid for use over thermoformed tray.



Foam divider inserts used in standard containers.



Foam carriers for transport of automotive trim pieces.

## Combination of injection molded standard products with thermoformed trays

Thermoformed component trays can be specially designed to fit any Utz standard product.



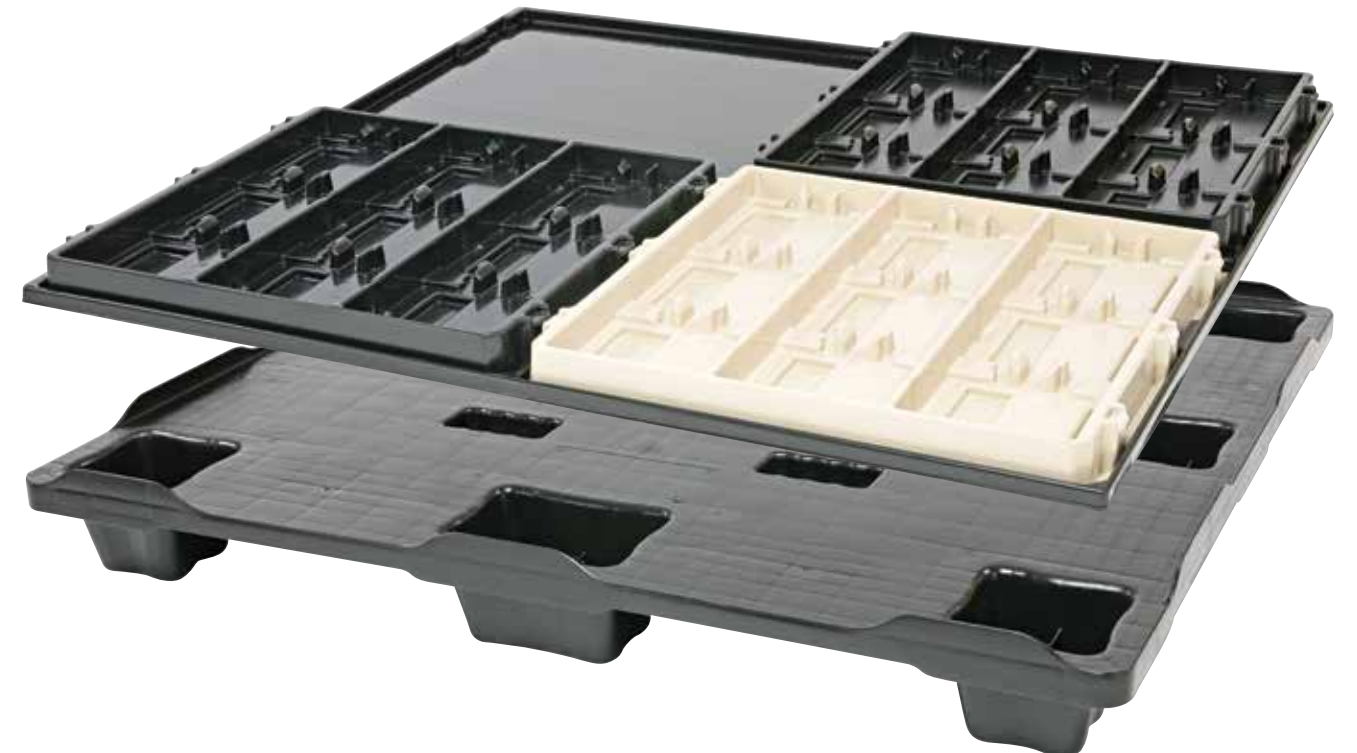
A EUROTEC container with a thermoformed insert.



A thermoformed tray with tabs that fit in the milled hole of the container to enable a secure attachment of the tray to the RAKO container.

## Pallet, alignment plate and tray combination

Unique footprint requirements of trays are often a challenge when combining for a standard shipping unit. Thermoformed alignment plates allow unique footprint trays to be securely stacked for shipping on a standard pallet.





## Insert examples



Dividers used in standard products.



Solid bottom with low profile dividers for use in standard products.



4 cell insert for use with small parts in standard containers.



6 cell insert for use with small parts in standard containers.



Uncommon straight wall containers can be formed to accommodate lower volume non standard application.

## Handles



Handle slots (milled)



Shell-shaped handles



Recess to provide handle or robot picking access



Sign inserted in the tool

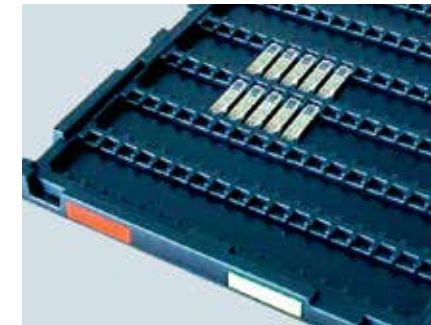
## Protection against misorientation



Rounded-off corner or other design



Marking in color, co-extruded color stripes asymmetrical



Pad printing



Label placard

## Identification



Mold in logo or text



Hot stamp



Label pocket



## Component trays injection molded

### Tight tolerance

There are times when robotic load and unload conditions require exact part location. In tight tolerance conditions like these, an injected molded component tray is the solution.

### Detailed features and undercuts

There are also times when ribbing and undercuts necessitate injection molding as the only sensible production method.

### Volume

Injection molding is generally more economical than thermoforming when very large quantities of component trays are required.

## Examples



Transport unit for pharmaceutical industry



Automation transport trays for medical devices



Component holder for engine accessories



Transport kit for camshafts



Component holder for transport of multiple versions of pistons



Component holder for electronics housing

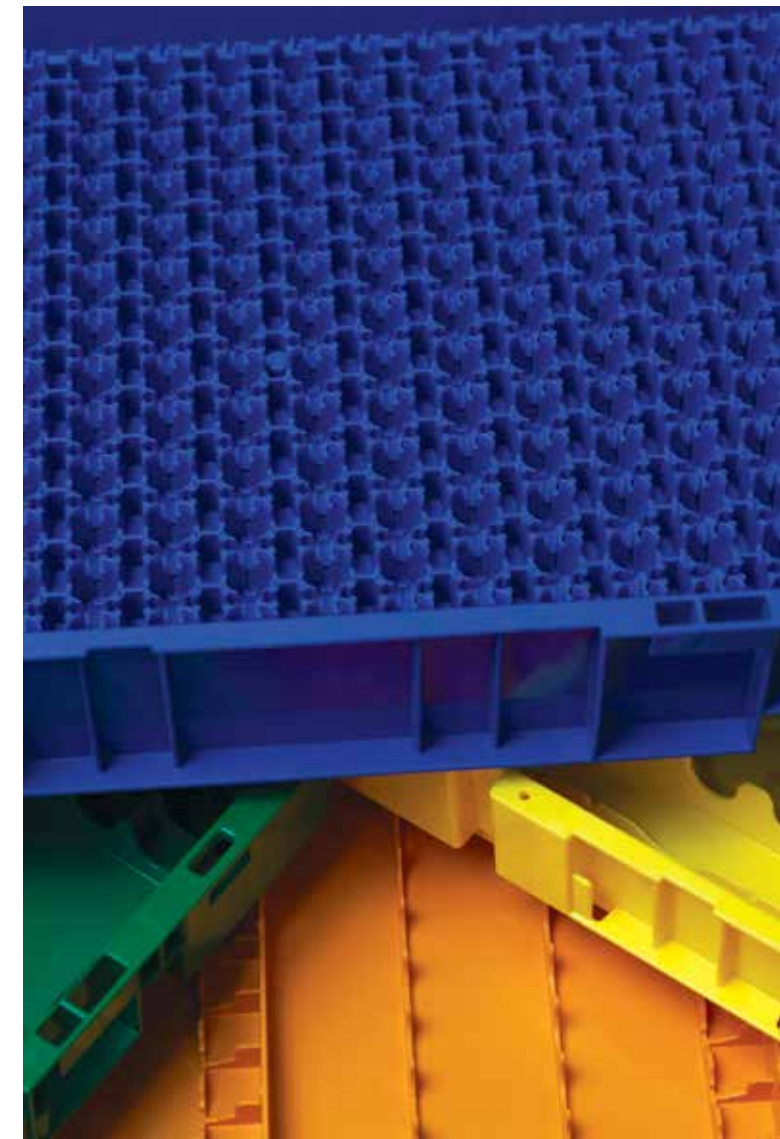
## Injection Molded Frame Trays Utz Standard Sizes

### Footprint

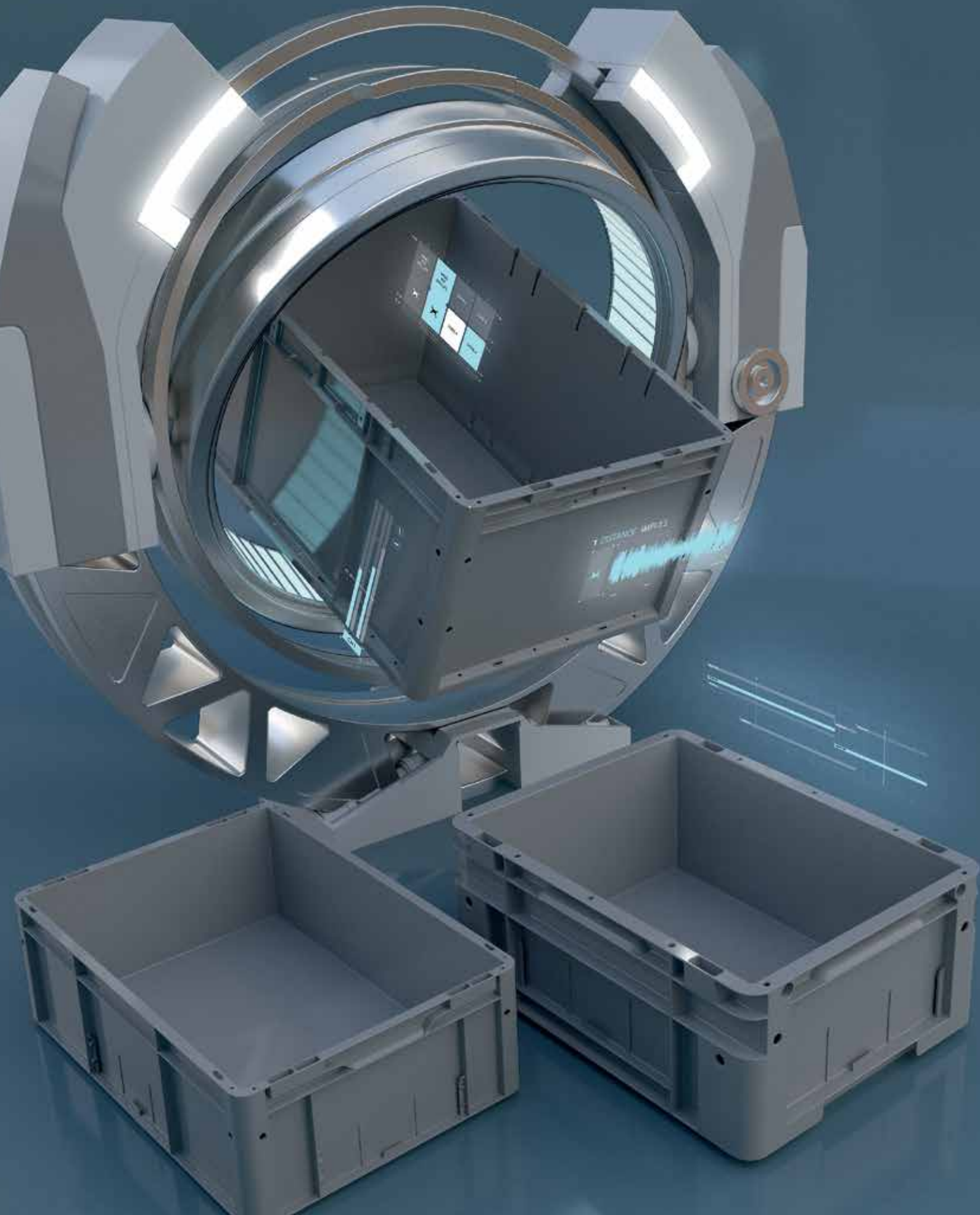
24 x 15 in / 609 x 381 mm

24 x 16 in / 600 x 400 mm

Additional sizes available upon request







## utz **EUROTEC**

- 42 | Automation and Storage
- 42 | Shipping Information
- 43 | Container Base Option
- 44 | Wall Options
- 45 | Internal Bin Options
- 46 | EUROTEC 600 x 400 x 220 mm
- 46 | EUROTEC 600 x 400 x 280 mm
- 46 | EUROTEC 600 x 400 x 300 mm
- 46 | EUROTEC 600 x 400 x 320 mm
- 46 | EUROTEC 600 x 400 x 325 mm
- 47 | EUROTEC 650 x 450 x 325 mm
- 47 | EUROTEC 800 x 600 x 325 mm
- 47 | EUROTEC 800 x 600 x 425 mm


### Stacking containers for use in automated storage and retrieval

The EUROTEC is a high performance straight wall container designed with automated systems, conveyance, handling and storage in mind. The EUROTEC offers a variety of features to ensure reliable, repeatable and durable performance within your system. A patented integrated divider solution accommodates the need for multiple SKU's in one tote. A variety of footprints, heights and bottom constructions ensures an optimal solution depending on product storage needs.

#### Features

- Designed for automation and conveyor systems
- Reinforced base variants
- Enclosed double base
- Enclosed double corners
- Vertical grip hook
- Ergonomic handles
- Fields for hot stamp, labels, label pockets, barcodes and RFID tags
- Filling weight up to 110 lbs for ribbed base and 154 lbs for enclosed double base
- Optional drainage holes
- Patented interlocking dividers

#### Benefits

- Flawless performance on automated systems
- Wide range of interfaces for robotic handling or automatic conveyors
- Non-existing floor flexing
- Optimum base stability
- A variety of footprints, heights and bottom instruction ensure an optimal solution specific to your product needs
- Available in ESD material 



### EUROTEC Shipping data

Part Number & Description	#/layer	#/pallet 1200 x 1000	#/pallet 1325 x 925	#/pallet 1200 x 800	#/truck 53' trailer
55-6040-220 600 x 400 x 220 mm	5	50			1500
55-6040-280 600 x 400 x 280 mm	5	45			1350
55-6040-300-100 600 x 400 x 300 mm	5	40			1200
55-6040G-320-100 600 x 400 x 320 mm Doubled welded and hybrid	5	35			1050
55-6040-325 600 x 400 x 325 mm	5	50			1500
55-6040-325 600 x 400 x 325 mm Slotted wall	5	35			1050
55-6545-325 650 x 450 x 325 mm	4		28		812
55-8060-325 800 x 600 x 325 mm	2			14	546
55-8060-425 600 x 600 x 425 mm	2			16	624



### Bases

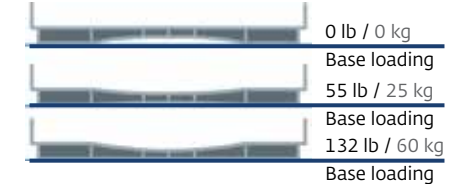
#### Flat base



#### Enclosed double welded - flat



#### Hybrid base



#### Ribbed base



Typical base deflection — these do not affect the capacity of containers; it only shows the deflection of the bottom.



## Wall options



### Smooth interior walls

Solid smooth interior walls and bottom allow for easy cleaning and avoid loss of small parts.



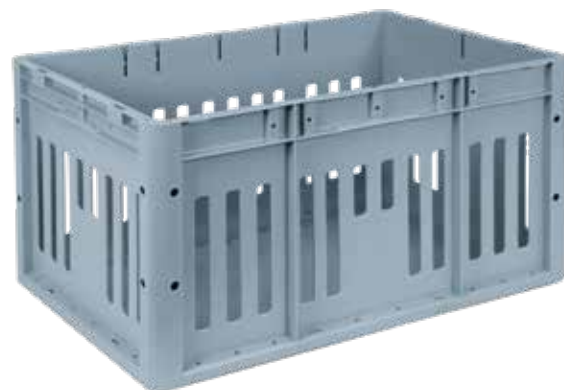
### Drainage holes

28 drainage hole standard. Other drainage configurations are available upon request. FM Global compliant drainage holes are also available upon request.



### Open handles

Open handles allow for easy manual handling of heavy loads.



### Slotted walls

Slotted walls accommodate situations where consistent air flow is critical.

## Dividers



Utz patented interlocking divider design is made of rigid ABS injection molded material. Short and long dividers are available in different heights.

## Internal bins

2, 4 and 8 bin inserts for easy picking and containment of small parts.





### 600 x 400 x 220 mm

23.6 x 15.7 x 8.7 in

Inner dimension: 554 x 354 x 217.50 mm / 21.8 x 14 x 8.6 in

Capacity: 42.7 liters / 1.5 ft<sup>3</sup>

Part number	Base	Weight	Usable height
55-6040-220-0	flat	1.9 kg / 4.2 lb	205.5 mm / 8.1 in
55-6040-220-1	ribbed	2.5 kg / 5.5 lb	185.5 mm / 7.3 in
55-6040-220-2	double welded	2.6 kg / 5.7 lb	191.5 mm / 7.5 in
55-6040-220-3	hybrid	2.5 kg / 5.5 lb	185.5 mm / 7.3 in



### 600 x 400 x 280 mm

23.6 x 15.7 x 11 in

Inner dimension: 554 x 354 x 277.50 mm / 21.8 x 14 x 10.9 in

Capacity: 54.4 liters / 1.92 ft<sup>3</sup>

Part number	Base	Weight	Usable height
55-6040-280-0	flat	2.2 kg / 4.8 lb	265.5 mm / 10.4 in
55-6040-280-1	ribbed	2.7 kg / 6.0 lb	245.5 mm / 9.7 in
55-6040-280-2	double welded	2.8 kg / 6.2 lb	251.5 mm / 9.9 in
55-6040-280-3	hybrid	2.7 kg / 6.0 lb	245.5 mm / 9.7 in



### 600 x 400 x 300 mm

23.6 x 15.7 x 11.8 in

Inner dimension: 565 x 365 x 282 mm / 22.2 x 14.3 x 11.1 in

Capacity: 58.1 liters / 2.1 ft<sup>3</sup>

Part number	Base	Weight	Usable height
55-6040-300-100	double welded	2.9 kg / 6.4 lb	271 mm / 10.7 in



### 600 x 400 x 320 mm

23.6 x 15.7 x 12.6 in

Inner dimension: 565 x 365 x 296 mm / 22.2 x 14.3 x 11.6 in

Capacity: 61.0 liters / 2.1 ft<sup>3</sup>

Part number	Base	Weight	Usable height
55-6040G-320-100	double welded	2.95 kg / 6.5 lb	290 mm / 11.4 in
55-6040G-320-3	hybrid	2.85 kg / 6.3 lb	284 mm / 11.2 in



### 600 x 400 x 325 mm

23.6 x 15.7 x 12.8 in

Inner dimension: 554 x 354 x 322 mm / 21.8 x 14 x 12.7 in

Capacity: 63.1 liters / 2.22 ft<sup>3</sup>

Part number	Base	Weight	Usable height
55-6040-325-0	flat	2.5 kg / 5.5 lb	310 mm / 12.2 in
55-6040-325-1	ribbed	3.0 kg / 6.7 lb	290.5 mm / 11.4 in
55-6040-325-2	double welded	3.1 kg / 6.8 lb	296.5 mm / 11.7 in
55-6040-325-3	hybrid	2.9 kg / 6.4 lb	290.5 mm / 11.4 in



### 650 x 450 x 325 mm

25.6 x 17.7 x 12.8 in

Inner dimension: 604 x 404 x 322 mm / 24 x 16 x 12.7 in

Capacity: 78.6 liters / 2.8 ft<sup>3</sup>

Part number	Base	Weight	Usable height
55-6545-325-0	flat	2.8 kg / 6.2 lb	310 mm / 12.2 in
55-6545-325-1	ribbed	3.5 kg / 7.7 lb	290.5 mm / 11.4 in
55-6545-325-2	double welded	3.6 kg / 7.9 lb	296.5 mm / 11.7 in
55-6545-325-3	hybrid	3.4 kg / 7.4 lb	290.5 mm / 11.4 in



### 800 x 600 x 325 mm

31.5 x 23.6 x 12.8 in

Inner dimension: 748 x 548 x 322 mm / 29.45 x 21.58 x 12.68 in

Capacity: 132.0 liters / 4.7 ft<sup>3</sup>

Part number	Base	Weight	Usable height
55-8060-325-0	flat	4.0 kg / 8.8 lb	308 mm / 12.1 in
55-8060-325-2	double welded	5.5 kg / 12.1 lb	291 mm / 11.5 in



### 800 x 600 x 425 mm

31.5 x 23.6 x 16.6 in

Inner dimension: 748 x 548 x 277.5 mm / 29.45 x 21.58 x 16.61 in

Capacity: 173 liters / 6.1 ft<sup>3</sup>

Part number	Base	Weight*	Usable height
55-8060-425-0	flat	5.2 kg / 11.5 lb	408 mm / 16.1 in
55-8060-425-2	double welded	6.6 kg / 14.5 lb	391 mm / 15.4 in

\*The wall thickness for estimated weights are 2.75" walls





## Small Load Containers-SLC

50 | Small Load Containers-SLC

50 | Shipping information

51 | Base and Handle options

52 | SLC 15 x 12 x 5 in

52 | SLC 15 x 12 x 7.5 in

52 | SLC 15 x 12 x 9.5 in

53 | SCL 24 x 15 x 5 in

53 | SLC 24 x 15 x 7.5 in

54 | SLC 24 x 15 x 9.5 in

54 | SLC 24 x 15 x 11 in

54 | SLC 24 x 15 x 14.5 in


55 | SLC 24 x 22 x 8.75 in

55 | SLC 24 x 22 x 11.5 in

55 | SLC 24 x 22 x 14 in

56 | SLC Accessories

### Small Load Containers-SLC

Utz small load containers are designed and tested to AIAG RC-9 specification. These stackable straight wall containers are compatible with the standard AIAG 48" x 45" pallet. With multiple base and lid options these containers can be customized to meet specific transportation needs. All SLC containers are available in ESD material. 

- 100% compatible with Utz current SLC, Pallets, Pallet Caps, Lids and competitor containers and lids for stacking
- Ergonomic, heavy-duty handle on short side
- High Impact PP

#### Label Holders

- Textured label area--eliminates placards
- Label holder redesign
  - Snap in
  - More visible
  - Easier to use

#### Automation Friendly

- Conveyable features for improved automation
  - Rounded corner
  - Continuous skirt
  - Chamfered base
- Improved durability of corners



### SLC shipping data

Seat belt options available

Part Number	Description	#/layer	#/pallet 48"x 45"	#/truck 53' trailer
50-1512-50	15 x 12 x 5 in	12	240	6240
50-1512-75	15 x 12 x 7.5 in	12	156	4056
50-1512-95	15 x 12 x 9.5 in	12	120	3120
50-2415-50	24 x 15 x 5 in	6	120	3120
50-2415-75	24 x 15 x 7.5 in	6	78	2028
50-2415-95	24 x 15 x 9.5 in	6	60	1560
50-2415-11	24 x 15 x 11 in	6	48	1248
50-2415-145	24 x 15 x 14.5 in	6	36	936
50-2422-90	24 x 22 x 8.75 in	4	44	1144
50-2422-11	24 x 22 x 11.5 in	4	32	832
50-2422-145	24 x 22 x 14 in	4	24	624

Pallet found on page 87. / Lid found on page 91.

### Bases

#### Flat base



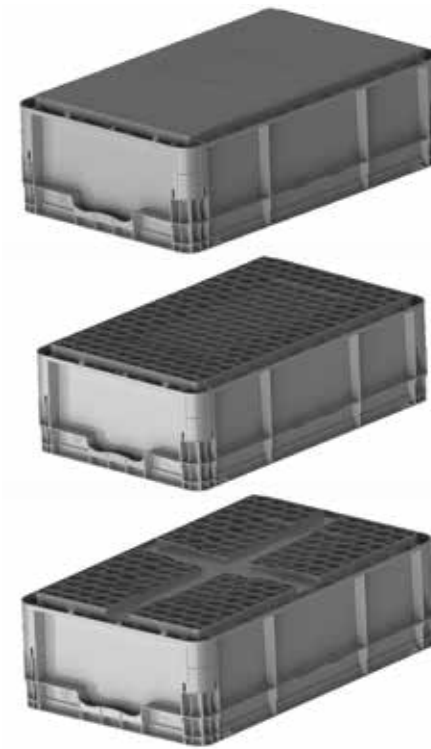
#### Ribbed base



#### Cross stacking base



Typical base deflection—these do not affect the capacity of containers; it only shows the deflection of the bottom.



### Shell handles

Large ergonomically designed shell handles are comfortable for manual transferring of heavy loads and allow ample clearance for bulky work gloves. Handles have drainage holes to drain collection of water during cleaning or temporary storage outside.





### 15 x 12 x 5 in

Exterior dimension: 15 x 12 x 5 in / 381 x 305 x 127 mm  
 Inner dimension: 13.1 x 9.6 x 4.4 in / 333 x 243 x 112 mm  
 Walls: solid  
 Handles: 2 shell handles  
 Capacity: 0.4 ft<sup>3</sup> / 10 liters

Part number	Base	Weight	Usable height	
			w/o lid	w/ lid
50-1512-50-0	flat	1.5 lb / 0.7 kg	4.4 in 112 mm	4.9 in 125 mm
50-1512-50-2	cross stacking	1.8 lb / 0.8 kg	3.9 in 99 mm	4.4 in 112 mm
50-1512-50-3	ribbed	1.8 lb / 0.8 kg	3.9 in 99 mm	4.4 in 112 mm



### 24 x 15 x 5 in

Exterior dimension: 24 x 15 x 5 in / 609 x 381 x 127 mm  
 Inner dimension: 21.6 x 13.1 x 4.4 in / 548 x 333 x 112 mm  
 Walls: solid  
 Handles: 2 shell handles  
 Capacity: 0.8 ft<sup>3</sup> / 23 liters

Part number	Base	Weight	Usable height	
			w/o lid	w/ lid
50-2415-50-0	flat	2.5 lb / 1.1 kg	4.4 in 112 mm	4.9 in 125 mm
50-2415-50-2	cross stacking	2.9 lb / 1.3 kg	3.9 in 99 mm	4.4 in 112 mm
50-2415-50-3	ribbed	2.9 lb / 1.3 kg	3.9 in 99 mm	4.4 in 112 mm



### 15 x 12 x 7.5 in

Exterior dimension: 15 x 12 x 7.5 in / 381 x 305 x 190 mm  
 Inner dimension: 13.1 x 9.6 x 6.9 in / 333 x 243 x 175 mm  
 Walls: solid  
 Handles: 2 shell handles  
 Capacity: 0.6 ft<sup>3</sup> / 16 liters

Part number	Base	Weight	Usable height	
			w/o lid	w/ lid
50-1512-75-0	flat	2.0 lb / 0.9 kg	6.9 in 175 mm	7.4 in 188 mm
50-1512-75-2	cross stacking	2.3 lb / 1.0 kg	6.4 in 162 mm	6.9 in 175 mm
50-1512-75-3	ribbed	2.3 lb / 1.0 kg	6.4 in 162 mm	6.9 in 175 mm



### 24 x 15 x 7.5 in

Exterior dimension: 24 x 15 x 7.5 in / 609 x 381 x 191 mm  
 Inner dimension: 21.6 x 13.1 x 6.9 in / 548 x 333 x 176 mm  
 Walls: solid  
 Handles: 2 shell handles  
 Capacity: 1.2 ft<sup>3</sup> / 35 liters

Part number	Base	Weight	Usable height	
			w/o lid	w/ lid
50-2415-75-0	flat	3.2 lb / 1.4 kg	6.9 in 175 mm	7.4 in 188 mm
50-2415-75-2	cross stacking	3.5 lb / 1.6 kg	6.4 in 162 mm	6.9 in 175 mm
50-2415-75-3	ribbed	3.5 lb / 1.6 kg	6.4 in 162 mm	6.9 in 175 mm



### 15 x 12 x 9.5 in

Exterior dimension: 15 x 12 x 9.5 in / 381 x 305 x 241 mm  
 Inner dimension: 13.1 x 9.6 x 8.9 in / 333 x 243 x 226 mm  
 Walls: solid  
 Handles: 2 shell handles  
 Capacity: 0.7 ft<sup>3</sup> / 20 liters

Part number	Base	Weight	Usable height	
			w/o lid	w/ lid
50-1512-95-0	flat	2.4 lb / 1.1 kg	8.9 in 225 mm	9.4 in 238 mm
50-1512-95-2	cross stacking	2.6 lb / 1.2 kg	8.4 in 213 mm	8.9 in 225 mm
50-1512-95-3	ribbed	2.6 lb / 1.2 kg	8.4 in 213 mm	8.9 in 225 mm



### 24 x 15 x 9.5 in

Exterior dimension: 24 x 15 x 9.5 in / 609 x 381 x 241 mm  
 Inner dimension: 21.6 x 13.1 x 8.9 in / 548 x 333 x 226 mm  
 Walls: solid  
 Handles: 2 shell handles  
 Capacity: 1.5 ft<sup>3</sup> / 42.4 liters

Part number	Base	Weight	Usable height	
			w/o lid	w/ lid
50-2415-95-0	flat	3.4 lb / 1.5 kg	8.8 in 225 mm	9.4 in 238 mm
50-2415-95-2	cross stacking	3.9 lb / 1.8 kg	8.4 in 212 mm	8.8 in 225 mm
50-2415-95-3	ribbed	3.9 lb / 1.8 kg	8.4 in 212 mm	8.8 in 225 mm



### 24 x 15 x 11 in

Exterior dimension: 24 x 15 x 11 in / 609 x 381 x 279 mm  
 Inner dimension: 21.6 x 13.1 x 10.4 in / 548 x 333 x 234 mm  
 Walls: solid  
 Handles: 2 shell handles  
 Capacity: 1.8 ft<sup>3</sup> / 51 liters

Part number	Base	Weight	Usable height	
			w/o lid	w/ lid
50-2415-110-0	flat	4.0 lb / 1.8 kg	10.4 in 264 mm	10.9 in 277 mm
50-2415-110-2	cross stacking	4.4 lb / 2.0 kg	9.9 in 251 mm	10.4 in 264 mm
50-2415-110-3	ribbed	4.4 lb / 2.0 kg	9.9 in 251 mm	10.4 in 264 mm



### 24 x 15 x 14.5 in

Exterior dimension: 24 x 15 x 14.5 in / 609 x 381 x 368 mm  
 Inner dimension: 21.6 x 13.1 x 13.9 in / 548 x 332 x 353 mm  
 Walls: solid  
 Handles: 2 shell handles  
 Capacity: 2.3 ft<sup>3</sup> / 66 liters

Part number	Base	Weight	Usable height	
			w/o lid	w/ lid
50-2415-145-0	flat	4.9 lb / 2.2 kg	13.9 in 352 mm	14.4 in 365 mm
50-2415-145-2	cross stacking	5.3 lb / 2.4 kg	13.4 in 340 mm	13.9 in 352 mm
50-2415-145-3	ribbed	5.3 lb / 2.4 kg	13.4 in 340 mm	13.9 in 352 mm



### 24 x 22 x 8.75 in

Exterior dimension: 24 x 22 x 8.75 in / 609 x 559 x 222 mm  
 Inner dimension: 21.6 x 20.5 x 8.1 in / 548 x 523 x 206 mm  
 Walls: solid  
 Handles: 2 shell handles  
 Capacity: 2.2 ft<sup>3</sup> / 62 liters

Part number	Base	Weight	Usable height	
			w/o lid	w/ lid
50-2422-90-0	flat	5.8 lb / 2.6 kg	8.1 in 206 mm	8.6 in 218 mm
50-2422-90-2	cross stacking	6.2 lb / 2.8 kg	7.6 in 193 mm	8.1 in 206 mm
50-2422-90-3	ribbed	6.2 lb / 2.8 kg	7.6 in 193 mm	8.1 in 206 mm



### 24 x 22 x 11 in

Exterior dimension: 24 x 22.5 x 11 in / 609 x 572 x 279 mm  
 Inner dimension: 21.6 x 20.5 x 10.4 in / 548 x 523 x 264 mm  
 Walls: solid  
 Handles: 2 shell handles  
 Capacity: 2.8 ft<sup>3</sup> / 79 liters

Part number	Base	Weight	Usable height	
			w/o lid	w/ lid
50-2422-110-0	flat	6.7 lb / 3.0 kg	10.4 in 264 mm	10.9 in 277 mm
50-2422-110-2	cross stacking	7.1 lb / 3.2 kg	9.9 in 251 mm	10.4 in 264 mm
50-2422-110-3	ribbed	7.1 lb / 3.2 kg	9.9 in 251 mm	10.4 in 264 mm



### 24 x 22 x 14 in

Exterior dimension: 24 x 22.5 x 14 in / 609 x 572 x 368 mm  
 Inner dimension: 21.6 x 20.5 x 13.9 in / 548 x 523 x 353 mm  
 Walls: solid  
 Handles: 2 shell handles  
 Capacity: 3.8 ft<sup>3</sup> / 108 liters

Part number	Base	Weight	Usable height	
			w/o lid	w/ lid
50-2422-145-0	flat	8.2 lb / 3.7 kg	13.9 in 353 mm	14.4 in 365 mm
50-2422-145-2	cross stacking	8.6 lb / 3.9 kg	13.4 in 340 mm	13.9 in 353 mm
50-2422-145-3	ribbed	8.6 lb / 3.9 kg	13.4 in 340 mm	13.9 in 353 mm





Snap lock



Hinge reinforcement



Label holder



Galvanized clip



Label Placard



Hot stamping



4 or 6 cell inserts



Thermoformed dividers



Foam Dividers



Black



Blue



Dark gray



Lime green



Silver gray



Orange

### Available colors

A variety of colors are available with a minimum order requirement.

## SLC accessories

All containers can be ordered with a variety of options:

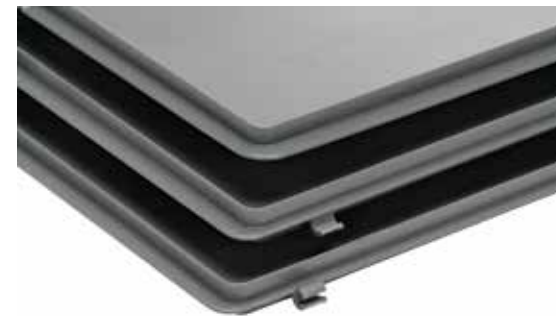
- Snap-locks are designed for easy opening and closing. Security seals are also available to prevent tampering.
- Hinge reinforcements permanently secure the lid to the container.
- Label holders, galvanized clips and hot stamping are automation features for locating, lifting, identification and orientation.
- Dividers are designed to be flexible for your specific product and allow for safe and secure transport.

Part number	Accessories
89-4-865	Snap lock
89-4-867	Hinge reinforcement
50-1-0	Label Holder
80-417-3	Galvanized Clip 16 mm
80-10011	Label Placard
Hot stamping	Font: HELVETICA 14 mm, UPPER and lower case 30 mm, UPPER and lower case
20-10017	4 cell thermoformed insert
20-10018	6 cell thermoformed insert
Dividers	Custom made
Foam Divider	Custom made

## Lids

Optional lids protect contents from dust and other foreign material. Lids are available in loose, hook-in and hinged options.

Part number	Article	Outer dimension
50-1512-0-0	Loose lid	15 x 12 in 381 x 305 mm
50-2415-0-0	Loose lid	24 x 15 in 609 x 381 mm
50-1512-0-2	Hook-in lid	15 x 12 in 381 x 305 mm
50-2415-0-2	Hook-in lid	24 x 15 in 609 x 381 mm
50-1512-0-1	Hinged lid	15 x 12 in 381 x 305 mm
50-2415-0-1	Hinged lid	24 x 15 in 609 x 381 mm
20-10008	Thermoformed Loose lid	24 x 22 in 609 x 559 mm





## utz **RAKO**

60 | Versatile Performer

60 | Shipping information

61 | Bases, Handles and Wall Options

62 | RAKO 200 x 150 x 120 mm

62 | RAKO 300 x 200 x 120 mm

62 | RAKO 300 x 200 x 220 mm

62 | RAKO 400 x 300 x 120 mm

63 | RAKO 400 x 300 x 170 mm

63 | RAKO 400 x 300 x 220 mm

63 | RAKO 600 x 400 x 100 mm

63 | RAKO 600 x 400 x 120 mm

64 | RAKO 600 x 400 x 170 mm

64 | RAKO 600 x 400 x 220 mm

64 | RAKO 600 x 400 x 325 mm

65 | Modified Heights

65 | Special Cut Options

66 | RAKO Accessories






## RAKO — A versatile performer

*Extremely stable*

RAKO owes its name to a shortened form of the German word for frame construction, Rahmenkonstruktion. This frame construction creates a very stable container.

*A wide range of styles*

The RAKO basic container is a universal container with design flexibility. It allows for a wide number of design variations ranging from base options to different types of handles and sides. All RAKOs are available in ESD material. 

## RAKO shipping data

Part Number	Description	#/layer	#/pallet 1200 x 800	#/truck 53' trailer
3-237	200 x 150 x 120 mm	32	640	24960
3-206	300 x 200 x 120 mm	16	320	12480
3-210	300 x 200 x 220 mm	16	160	6240

Part Number	Description	#/layer	#/pallet 1200 x 1000	#/truck 53' trailer
3-203	400 x 300 x 120 mm	10	200	6000
3-207	400 x 300 x 170 mm	10	150	4500
3-204	400 x 300 x 220 mm	10	100	3000
3-228	600 x 400 x 100 mm	5	100	3000
3-200	600 x 400 x 120 mm	5	100	3000
3-208	600 x 400 x 170 mm	5	75	2250
3-201	600 x 400 x 220 mm	5	50	1500
3-202	600 x 400 x 325 mm	5	35	1050

*Pallet found on page 87-90. / Lid found on page 91.*

## Bases

Flat base



*Flat base*



Heavy duty base



*Heavy duty base*



Enclosed double base

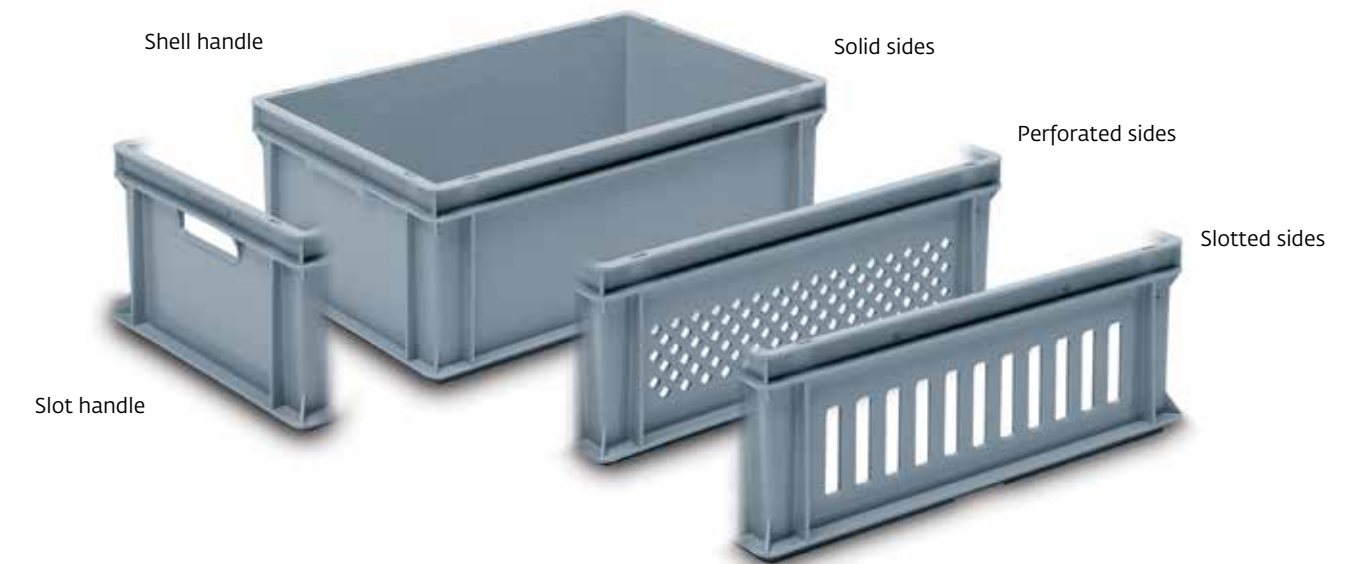


*Enclosed double base*



Typical base deflection — these do not affect the capacity of containers; it only shows the deflection of the bottom.

## Handles & Wall Options





**200 x 150 x 120 mm**

8 x 6 x 4.7 in  
 Inner dimension: 162 x 112 x 97 mm / 6.4 x 4.4 x 3.8 in  
 Base: flat  
 Weight: 0.2 kg / 0.4 lb  
 Capacity: 2 liters / 0.07 ft<sup>3</sup>

Part number	Walls	Handles	Usable height	
			w/o lid	w/ lid
3-237-0 *	solid	profile	97 mm 3.8 in	112 mm 4.4 in

\* Produced in Germany



**300 x 200 x 120 mm**

12 x 8 x 4.7 in  
 Inner dimension: 258 x 160 x 97 mm / 10.2 x 6.4 x 3.8 in  
 Base: flat  
 Weight: 0.5 kg / 1.1 lb  
 Capacity: 5 liters / 0.17 ft<sup>3</sup>

Part number	Walls	Handles	Usable height	
			w/o lid	w/ lid
3-206-0 *	solid	profile	97 mm 3.8 in	112 mm 4.4 in

\* Produced in Germany



**300 x 200 x 220 mm**

12 x 8 x 8.7 in  
 Inner dimension: 258 x 160 x 203 mm / 10.2 x 6.3 x 8.0 in  
 Base: flat  
 Weight: 0.7 kg / 1.5 lb  
 Capacity: 9 liters / 0.32 ft<sup>3</sup>

Part number	Walls	Handles	Usable height	
			w/o lid	w/ lid
3-210-0	solid	profile	203 mm 8.0 in	218 mm 8.6 in


\* Produced in Germany



**400 x 300 x 120 mm**

16 x 12 x 4.7 in  
 Inner dimension: 358 x 258 x 100 mm / 14.1 x 10.2 x 3.9 in  
 Base: flat  
 Weight: 0.9 kg / 2.0 lb  
 Capacity: 10 liters / 0.35 ft<sup>3</sup>

Part number	Walls	Handles	Usable height	
			w/o lid	w/ lid
3-203-0	solid	2 shell handles	100 mm 3.9 in	114 mm 4.5 in
3-203-1	long sides perforated, short sides solid	2 shell handles	100 mm 3.9 in	114 mm 4.5 in
3-203-2	long sides slotted, short sides solid	2 shell handles	100 mm 3.9 in	114 mm 4.5 in

RAKO ESD container information found on page 74-75. 



**400 x 300 x 170 mm**

16 x 12 x 6.7 in  
 Inner dimension: 358 x 258 x 165 mm / 14.1 x 10.2 x 6.5 in  
 Base: flat  
 Weight: 0.9 kg / 2.0 lb  
 Capacity: 15 liters / 0.53 ft<sup>3</sup>

Part number	Walls	Handles	Usable height	
			w/o lid	w/ lid
3-207-0	solid	2 shell handles	151 mm 6.0 in	165 mm 6.5 in



**400 x 300 x 220 mm**

16 x 12 x 8.7 in  
 Inner dimension: 358 x 258 x 203 mm / 14.1 x 10.2 x 8.0 in  
 Base: flat  
 Weight: 1.3 kg / 2.9 lb  
 Capacity: 20 liters / 0.71 ft<sup>3</sup>

Part number	Walls	Handles	Usable height	
			w/o lid	w/ lid
3-204-0	solid	2 shell handles	203 mm 8.0 in	217 mm 8.5 in
3-304-0	solid	2 handle slots	203 mm 8.0 in	217 mm 8.5 in
3-204-1	perforated	2 shell handles	203 mm 8.0 in	217 mm 8.5 in
3-304-1	perforated	2 handle slots	203 mm 8.0 in	217 mm 8.5 in
3-204-2	slotted	2 shell handles	203 mm 8.0 in	217 mm 8.5 in
3-304-2	slotted	2 handle slots	203 mm 8.0 in	217 mm 8.5 in



**600 x 400 x 100 mm**

24 x 16 x 3.9 in  
 Inner dimension: 558 x 358 x 83 mm / 22.0 x 14.1 x 3.2 in  
 Base: flat  
 Weight: 1.3 kg / 2.9 lb  
 Capacity: 19 liters / 0.67 ft<sup>3</sup>

Part number	Walls	Handles	Usable height	
			w/o lid	w/ lid
3-228-0	solid	2 shell handles	83 mm 3.2 in	97 mm 3.8 in
3-228-1	long sides perforated, short sides solid	2 shell handles	83 mm 3.2 in	97 mm 3.8 in
3-228-2	long sides slotted, short sides solid	2 shell handles	83 mm 3.2 in	97 mm 3.8 in



**600 x 400 x 120 mm**

24 x 16 x 4.7 in  
 Inner dimension: 558 x 358 x 100 mm / 22.0 x 14.1 x 3.9 in  
 Base: flat  
 Weight: 1.7 kg / 3.75 lb  
 Capacity: 20 liters / 0.71 ft<sup>3</sup>

Part number	Walls	Handles	Usable height	
			w/o lid	w/ lid
3-200-0	solid	2 shell handles	100 mm 3.9 in	114 mm 4.5 in
3-200-1	long sides perforated, short sides solid	2 shell handles	100 mm 3.9 in	114 mm 4.5 in
3-200-2	long sides slotted, short sides solid	2 shell handles	100 mm 3.9 in	114 mm 4.5 in

RAKO ESD container information found on page 74-75. 





### 600 x 400 x 170 mm

24 x 16 x 6.5 in

Inner dimension: 558 x 358 x 165 mm / 22 x 14.1 x 6.5 in

Base: flat

Weight: 1.5 kg / 3.31 lb

Capacity: 30 liters / 1.6 ft<sup>3</sup>

Part number	Walls	Handles	Usable height w/o lid	Usable height w/ lid
3-208-0	solid	2 shell handles 5.9 in	149 mm 6.4 in	163 mm 6.4 in
3-208-1	perforated	2 shell handles	149 mm 5.9 in	163 mm 6.4 in
3-208-2	slotted	2 shell handles	149 mm 5.9 in	163 mm 6.4 in



### 600 x 400 x 220 mm

24 x 16 x 8.7 in

Inner dimension: 558 x 358 x 203 mm / 22.0 x 14.1 x 8.0 in

Base: flat

Weight: 2.3 kg / 5.1 lb

Capacity: 40 liters / 1.42 ft<sup>3</sup>

Part number	Walls	Handles	Usable height w/o lid	Usable height w/ lid
3-201-0	solid	2 shell handles	203 mm 8.0 in	217 mm 8.5 in
3-301-0	solid	2 handle slots	203 mm 8.0 in	217 mm 8.5 in
3-201-1	perforated	2 shell handles	203 mm 8.0 in	217 mm 8.5 in
3-301-1	perforated	2 handle slots	203 mm 8.0 in	217 mm 8.5 in
3-201-2	slotted	2 shell handles	203 mm 8.0 in	217 mm 8.5 in
3-301-2	slotted	2 handle slots	203 mm 8.0 in	217 mm 8.5 in



### 600 x 400 x 325 mm

24 x 16 x 12.8 in

Inner dimension: 558 x 358 x 305 mm / 22.0 x 14.1 x 12.0 in

Base: flat

Weight: 3.0 kg / 6.6 lb

Capacity: 60 liters / 2.12 ft<sup>3</sup>

Part number	Walls	Handles	Usable height w/o lid	Usable height w/ lid
3-202-0	solid	2 shell handles	305 mm 12.0 in	319 mm 12.6 in
3-302-0	solid	2 handle slots	305 mm 12.0 in	319 mm 12.6 in
3-202-1	perforated	2 shell handles	305 mm 12.0 in	319 mm 12.6 in
3-302-1	perforated	2 handle slots	305 mm 12.0 in	319 mm 12.6 in
3-202-2	slotted	2 shell handles	305 mm 12.0 in	319 mm 12.6 in
3-302-2	slotted	2 handle slots	305 mm 12.0 in	319 mm 12.6 in

## Modified heights

The RAKO frame design allows the container to be cut to a shorter height dimension via a secondary operation.

Sizes	Cut down size
300 x 200 x 120 mm	300 x 200 x 94.5 mm / 12 x 8 x 3.7 in
300 x 200 x 220 mm	300 x 200 x 190 mm / 12 x 8 x 7.5 in
400 x 300 x 120 mm	400 x 300 x 94.5 mm / 16 x 12 x 3.7 in
400 x 300 x 170 mm	400 x 300 x 134 mm / 16 x 12 x 5.3 in
400 x 300 x 220 mm	400 x 300 x 190 mm / 16 x 12 x 7.5 in
600 x 400 x 100 mm	600 x 400 x 75 mm / 24 x 16 x 2.9 in
600 x 400 x 120 mm	600 x 400 x 94.5 mm / 24 x 16 x 3.7 in
600 x 400 x 170 mm	600 x 400 x 134 mm / 24 x 16 x 5.3 in
600 x 400 x 220 mm	600 x 400 x 190 mm / 24 x 16 x 7.5 in
600 x 400 x 325 mm	600 x 400 x 288 mm / 24 x 16 x 11.3 in



## Special cut out options

Standard containers can be modified for special uses. Cut outs can be precisely made with our CNC milling machine.





Snap lock



Hinge reinforcement



Galvanized clip



Dividers



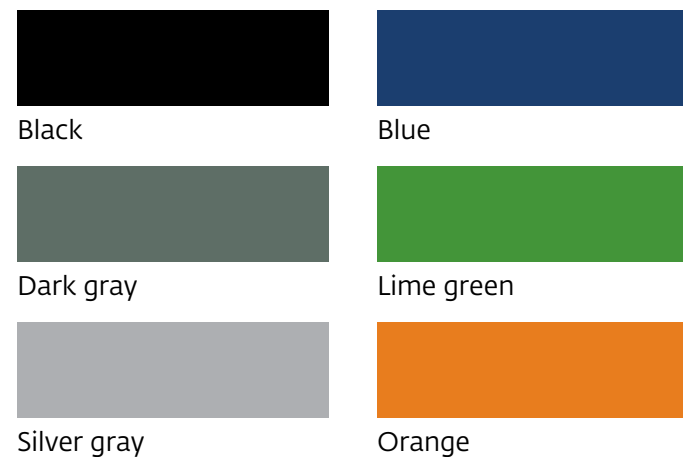
Hot stamping

## Container accessories

All containers can be ordered with a variety of options:

- Snap-locks are designed for easy opening and closing. Security seals are also available to prevent tampering.
- Hinge reinforcement permanently secures lid to container.
- Galvanized clips and hot stamping are automation features for locating, lifting, identification and orientation.
- Dividers allow for products to be safe and secure while in transport.

Part number	Accessories
89-4-862	Snap lock
89-3-832	Hinge reinforcement
80-417-1	Galvanized Clip 19 mm
Dividers	Custom made
Handles	Upon request
Hot stamping	Font: HELVETICA 14 mm, UPPER and lower case 30 mm, UPPER and lower case



## Available colors

A variety of colors are available with a minimum order requirement.



## Lids

Optional lids protect contents from dust and other foreign material. Lids are available in loose, hook-in, hinged and thermoform options.

Part number	Article	Outer dimension
3-944-0 *	Loose lid	200 x 150 mm 8 x 6 in
3-215-0 *	Loose lid	300 x 200 mm 12 x 8 in
3-214-0-0	Loose lid	400 x 300 mm 16 x 12 in
3-213-0-0	Loose lid	600 x 400 mm 24 x 16 in
3-944-2	Hook-in lid	200 x 150 mm 8 x 6 in
3-215-0-2	Hook-in lid	300 x 200 mm 12 x 8 in
3-214-0-2	Hook-in lid	400 x 300 mm 16 x 12 in
3-213-0-2	Hook-in lid	600 x 400 mm 24 x 16 in
3-944-1	Hinged lid	200 x 150 mm 8 x 6 in
3-215-0-1	Hinged lid	300 x 200 mm 12 x 8 in
3-214-0-1	Hinged lid	400 x 300 mm 16 x 12 in
3-213-0-1	Hinged lid	600 x 400 mm 24 x 16 in
20-10010	Thermoform Loose lid	600 x 400 mm 24 x 16 in

\* Produced in Germany





## Electrostatic Discharge Products

70 | Conductive Products

71 | Component Holders

72 | SLC

74 | RAKO

76 | ESD Lids

77 | Printed Circuit Board Holder



### Conductive products

*Protection against electrostatic discharges*

Electronic components can be damaged by electrostatic discharge not only during transport, but also in storage and during assembly.

Our ESD (electrostatic discharge products) storage and transport system protects you in two ways.

We use electroconductive plastic to prevent damage due to electrostatic discharges and also use robust plastic panels to protect the contents against mechanical damage, contamination or moisture.



## Custom ESD Thermoformed Trays



### *Thermoformed component trays*

ESD thermoformed trays can be produced as interlayer, stacking or stack and nest.



### *Thermoformed component trays from a frame tool*

Custom thermoformed trays can be produced from Utz frame tools. The frame tool designs are compatible for conveying and automated systems.



### *Injection molded component trays*

Custom injection molded trays are required when either tolerance, design features, or volume dictates.



### *Specialty trays*

Utz has a variety of products and process specific solutions to suit our customers needs.





### 15 x 12 x 5 in

Exterior dimension: 15 x 12 x 5 in / 381 x 305 x 127 mm  
 Inner dimension: 13.1 x 9.6 x 4.4 in / 333 x 243 x 112 mm  
 Walls: solid  
 Handles: 2 shell handles  
 Capacity: 0.4 ft<sup>3</sup> / 10 liters

Part number	Base	Weight	Usable height w/o lid	Usable height w/ lid
50-1512-50-0.EL	flat	1.7 lb / 0.8 kg	4.4 in 112 mm	4.9 in 125 mm
50-1512-50-2.EL	cross stacking	1.9 lb / 0.9 kg	3.9 in 99 mm	4.4 in 112 mm
50-1512-50-3.EL	ribbed	1.9 lb / 0.9 kg	3.9 in 99 mm	4.4 in 112 mm

### 15 x 12 x 7.5 in

Exterior dimension: 15 x 12 x 7.5 in / 381 x 305 x 190 mm  
 Inner dimension: 13.1 x 9.6 x 6.9 in / 333 x 243 x 175 mm  
 Walls: solid  
 Handles: 2 shell handles  
 Capacity: 0.5 ft<sup>3</sup> / 15 liters

Part number	Base	Weight	Usable height w/o lid	Usable height w/ lid
50-1512-75-0.EL	flat	2.2 lb / 1.0 kg	6.9 in 175 mm	7.4 in 188 mm
50-1512-75-2.EL	cross stacking	2.5 lb / 1.1 kg	6.4 in 162 mm	6.9 in 175 mm
50-1512-75-3.EL	ribbed	2.5 lb / 1.1 kg	6.4 in 162 mm	6.9 in 175 mm

### 15 x 12 x 9.5 in

Exterior dimension: 15 x 12 x 9.5 in / 381 x 305 x 244 mm  
 Inner dimension: 13.1 x 9.6 x 8.9 in / 333 x 243 x 238 mm  
 Walls: solid  
 Handles: 2 shell handles  
 Capacity: 0.7 ft<sup>3</sup> / 19 liters

Part number	Base	Weight	Usable height w/o lid	Usable height w/ lid
50-1512-95-0.EL	flat	2.6 lb / 1.2 kg	8.9 in 225 mm	9.4 in 238 mm
50-1512-95-2.EL	cross stacking	2.9 lb / 1.3 kg	8.4 in 213 mm	8.9 in 225 mm
50-1512-95-3.EL	ribbed	2.9 lb / 1.3 kg	8.4 in 213 mm	8.9 in 225 mm

### 24 x 15 x 5 in

Exterior dimension: 24 x 15 x 5 in / 609 x 381 x 127 mm  
 Inner dimension: 21.6 x 13.1 x 4.4 in / 548 x 333 x 112 mm  
 Walls: solid  
 Handles: 2 shell handles  
 Capacity: 0.8 ft<sup>3</sup> / 23 liters

Part number	Base	Weight	Usable height w/o lid	Usable height w/ lid
50-2415-50-0.EL	flat	2.7 lb / 1.2 kg	4.4 in 112 mm	4.9 in 125 mm
50-2415-50-2.EL	cross stacking	3.2 lb / 1.4 kg	3.9 in 99 mm	4.4 in 112 mm
50-2415-50-3.EL	ribbed	3.2 lb / 1.4 kg	3.9 in 99 mm	4.4 in 112 mm

### 24 x 15 x 7.5 in

Exterior dimension: 24 x 15 x 7.5 in / 609 x 381 x 191 mm  
 Inner dimension: 21.6 x 13.1 x 6.9 in / 548 x 333 x 176 mm  
 Walls: solid  
 Handles: 2 shell handles  
 Capacity: 1.2 ft<sup>3</sup> / 34 liters

Part number	Base	Weight	Usable height w/o lid	Usable height w/ lid
50-2415-75-0.EL	flat	3.4 lb / 1.6 kg	6.9 in 175 mm	7.4 in 188 mm
50-2415-75-2.EL	cross stacking	3.9 lb / 1.7 kg	6.4 in 162 mm	6.9 in 175 mm
50-2415-75-3.EL	ribbed	3.9 lb / 1.7 kg	6.4 in 162 mm	6.9 in 175 mm

### 24 x 15 x 9.5 in

Exterior dimension: 24 x 15 x 9.5 in / 609 x 381 x 241 mm  
 Inner dimension: 21.6 x 13.1 x 8.9 in / 548 x 333 x 226 mm  
 Walls: solid  
 Handles: 2 shell handles  
 Capacity: 1.5 ft<sup>3</sup> / 43 liters

Part number	Base	Weight	Usable height w/o lid	Usable height w/ lid
50-2415-95-0.EL	flat	3.7 lb / 1.7 kg	8.8 in 225 mm	9.4 in 238 mm
50-2415-95-2.EL	cross stacking	4.3 lb / 2.0 kg	8.3 in 212 mm	8.9 in 225 mm
50-2415-95-3.EL	ribbed	4.3 lb / 2.0 kg	8.3 in 212 mm	8.9 in 225 mm

### 24 x 15 x 11 in

Exterior dimension: 24 x 15 x 11 in / 609 x 381 x 279 mm  
 Inner dimension: 21.6 x 13.1 x 10.4 in / 548 x 333 x 234 mm  
 Walls: solid  
 Handles: 2 shell handles  
 Capacity: 1.8 ft<sup>3</sup> / 51 liters

Part number	Base	Weight	Usable height w/o lid	Usable height w/ lid
50-2415-110-0.EL	flat	4.4 lb / 2.0 kg	10.4 in 264 mm	10.9 in 277 mm
50-2415-110-2.EL	cross stacking	4.8 lb / 2.2 kg	9.9 in 251 mm	10.4 in 264 mm
50-2415-110-3.EL	ribbed	4.8 lb / 2.2 kg	9.9 in 251 mm	10.4 in 264 mm

### 24 x 15 x 14.5 in

Exterior dimension: 24 x 15 x 14.5 in / 609 x 381 x 368 mm  
 Inner dimension: 21.6 x 13.1 x 13.9 in / 548 x 332 x 353 mm  
 Walls: solid  
 Handles: 2 shell handles  
 Capacity: 2.3 ft<sup>3</sup> / 66 liters

Part number	Base	Weight	Usable height w/o lid	Usable height w/ lid
50-2415-145-0.EL	flat	5.4 lb / 2.5 kg	13.9 in 352 mm	14.4 in 365 mm
50-2415-145-2.EL	cross stacking	5.8 lb / 2.6 kg	13.4 in 340 mm	13.9 in 352 mm
50-2415-145-3.EL	ribbed	5.8 lb / 2.6 kg	13.4 in 340 mm	13.9 in 352 mm

### 24 x 22 x 8.75 in

Exterior dimension: 24 x 22 x 8.75 in / 609 x 559 x 222 mm  
 Inner dimension: 21.6 x 20.5 x 8.1 in / 548 x 523 x 206 mm  
 Walls: solid  
 Handles: 2 shell handles  
 Capacity: 2.2 ft<sup>3</sup> / 62 liters

Part number	Base	Weight	Usable height w/o lid	Usable height w/ lid
50-2422-90-0.EL	flat	6.4 lb / 2.9 kg	8.1 in 206 mm	8.6 in 218 mm
50-2422-90-2.EL	cross stacking	6.8 lb / 3.1 kg	7.8 in 193 mm	8.1 in 193 mm
50-2422-90-3.EL	ribbed	6.8 lb / 3.1 kg	7.8 in 193 mm	8.1 in 193 mm

### 24 x 22 x 11 in

Exterior dimension: 24 x 22.5 x 11 in / 609 x 572 x 279 mm  
 Inner dimension: 21.6 x 20.5 x 10.4 in / 548 x 523 x 264 mm  
 Walls: solid  
 Handles: 2 shell handles  
 Capacity: 2.8 ft<sup>3</sup> / 79 liters

Part number	Base	Weight	Usable height w/o lid	Usable height w/ lid
50-2422-110-0.EL	flat	7.3 lb / 3.3 kg	10.4 in 264 mm	10.9 in 277 mm
50-2422-110-2.EL	cross stacking	7.7 lb / 3.5 kg	9.9 in 251 mm	10.4 in 264 mm
50-2422-110-3.EL	ribbed	7.7 lb / 3.5 kg	9.9 in 251 mm	10.4 in 264 mm

### 24 x 22 x 14.5 in

Exterior dimension: 24 x 22.5 x 14.5 in / 609 x 572 x 368 mm  
 Inner dimension: 21.6 x 20.5 x 13.9 in / 548 x 523 x 353 mm  
 Walls: solid  
 Handles: 2 shell handles  
 Capacity: 3.8 ft<sup>3</sup> / 108 liters

Part number	Base	Weight	Usable height w/o lid	Usable height w/ lid
50-2422-145-0.EL	flat	9.1 lb / 4.1 kg	13.9 in 353 mm	14.4 in 365 mm
50-2422-145-2.EL	cross stacking	9.6 lb / 4.3 kg	13.4 in 340 mm	13.9 in 353 mm
50-2422-145-3.EL	ribbed	9.6 lb / 4.3 kg	13.4 in 340 mm	13.9 in 353 mm



### 400 x 300 x 170 mm

16 x 12 x 6.7 in  
Inner dimension: 358 x 258 x 165 mm / 14.1 x 10.2 x 6.5 in  
Base: flat  
Weight: 1.0 kg / 2.2 lb  
Capacity: 15 liters / 0.53 ft<sup>3</sup>

Part number	Walls	Handles	Usable height	
			w/o lid	w/ lid
3-207G-0.EL	solid	2 shell handles	151 mm 6.0 in	165 mm 6.5 in

### 600 x 400 x 170 mm

24 x 16 x 6.5 in  
Inner dimension: 558 x 358 x 165 mm / 22 x 14.1 x 6.5 in  
Base: flat  
Weight: 1.6 kg / 3.5 lb  
Capacity: 30 liters / 1.6 ft<sup>3</sup>

Part number	Walls	Handles	Usable height	
			w/o lid	w/ lid
3-208G-0	solid	2 shell handles	149 mm 5.9 in	163 mm 6.4 in

### 400 x 300 x 220 mm

16 x 12 x 8.7 in  
Inner dimension: 358 x 258 x 203 mm / 14.1 x 10.2 x 8.0 in  
Base: flat  
Weight: 1.5 kg / 3.2 lb  
Capacity: 20 liters / 0.71 ft<sup>3</sup>

Part number	Walls	Handles	Usable height	
			w/o lid	w/ lid
3-204-0	solid	2 shell handles	203 mm 8.0 in	217 mm 8.5 in

### 600 x 400 x 220 mm

24 x 16 x 8.7 in  
Inner dimension: 558 x 358 x 203 mm / 22.0 x 14.1 x 8.0 in  
Base: flat  
Weight: 2.5 kg / 5.5 lb  
Capacity: 40 liters / 1.42 ft<sup>3</sup>

Part number	Walls	Handles	Usable height	
			w/o lid	w/ lid
3-201-0	solid	2 shell handles	203 mm 8.0 in	218 mm 8.5 in

### 200 x 150 x 120 mm

8 x 6 x 4.7 in  
Inner dimension: 162 x 112 x 97 mm / 6.4 x 4.4 x 3.8 in  
Base: flat  
Weight: 0.2 kg / 0.5 lb  
Capacity: 2 liters / 0.07 ft<sup>3</sup>

Part number	Walls	Handles	Usable height	
			w/o lid	w/ lid
3-237-0.EL *	solid	profile	97 mm 3.8 in	112 mm 4.4 in

\* Produced in Germany

### 300 x 200 x 220 mm

12 x 8 x 8.7 in  
Inner dimension: 258 x 160 x 203 mm / 10.2 x 6.3 x 8.0 in  
Base: flat  
Weight: 0.8 kg / 1.7 lb  
Capacity: 9 liters / 0.32 ft<sup>3</sup>

Part number	Walls	Handles	Usable height	
			w/o lid	w/ lid
3-210-0.EL *	solid	profile	203 mm 8.0 in	218 mm 8.6 in

\* Produced in Germany

### 600 x 400 x 100 mm

24 x 16 x 3.9 in  
Inner dimension: 558 x 358 x 83 mm / 22.0 x 14.1 x 3.2 in  
Base: flat  
Weight: 1.5 kg / 3.2 lb  
Capacity: 19 liters / 0.67 ft<sup>3</sup>

Part number	Walls	Handles	Usable height	
			w/o lid	w/ lid
3-228-0.EL	solid	2 shell handles	83 mm 3.2 in	97 mm 3.8 in

### 600 x 400 x 325 mm

24 x 16 x 12.8 in  
Inner dimension: 558 x 358 x 305 mm / 22.0 x 14.1 x 12.0 in  
Base: flat  
Weight: 3.3 kg / 7.3 lb  
Capacity: 60 liters / 2.12 ft<sup>3</sup>

Part number	Walls	Handles	Usable height	
			w/o lid	w/ lid
3-202-0	solid	2 shell handles	305 mm 12.0 in	319 mm 12.6 in

### 300 x 200 x 120 mm

12 x 8 x 4.7 in  
Inner dimension: 258 x 160 x 97 mm / 10.2 x 6.4 x 3.8 in  
Base: flat  
Weight: 0.5 kg / 1.2 lb  
Capacity: 5 liters / 0.17 ft<sup>3</sup>

Part number	Walls	Handles	Usable height	
			w/o lid	w/ lid
3-206-0.EL *	solid	profile	97 mm 3.8 in	112 mm 4.4 in

\* Produced in Germany

### 400 x 300 x 120 mm

16 x 12 x 4.7 in  
Inner dimension: 358 x 258 x 100 mm / 14.1 x 10.2 x 3.9 in  
Base: flat  
Weight: 1.0 kg / 2.2 lb  
Capacity: 10 liters / 0.35 ft<sup>3</sup>

Part number	Walls	Handles	Usable height	
			w/o lid	w/ lid
3-203-0.EL	solid	2 shell handles	100 mm 3.9 in	114 mm 4.5 in

### 600 x 400 x 120 mm

24 x 16 x 4.7 in  
Inner dimension: 558 x 358 x 100 mm / 22.0 x 14.1 x 3.9 in  
Base: flat  
Weight: 1.9 kg / 4.1 lb  
Capacity: 20 liters / 0.71 ft<sup>3</sup>

Part number	Walls	Handles	Usable height	
			w/o lid	w/ lid
3-200-0.EL	solid	2 shell handles	100 mm 3.9 in	115 mm 4.5 in





### SLC lids ESD

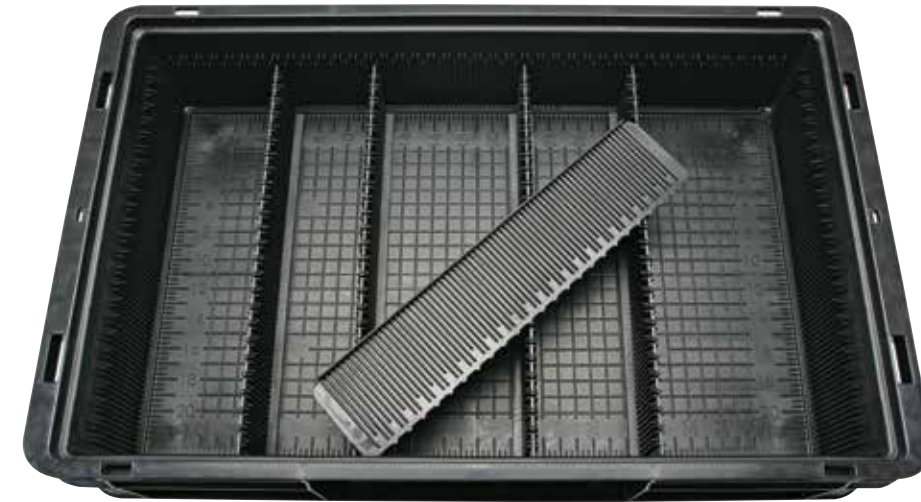
Part number	Article	Outer dimension
50-1512-0-0.EL	Loose lid	15 x 12 in 381 x 305 mm
50-2415-0-0.EL	Loose lid	24 x 15 in 609 x 381 mm
50-1512-0-1.EL	Hinged lid	15 x 12 in 381 x 305 mm
50-2415-0-1.EL	Hinged lid	24 x 15 in 609 x 381 mm
50-1512-0-2.EL	Hook-in lid	15 x 12 in 381 x 305 mm
50-2415-0-2.EL	Hook-in lid	24 x 15 in 609 x 381 mm
20-10008.EL	Thermoformed Loose lid	24 x 22 in 609 x 559 in



### RAKO lids ESD

Part number	Article	Outer dimension
3-944-0.EL *	Loose lid	200 x 150 mm 8 x 6 in
3-215-0-0.EL *	Loose lid	300 x 200 mm 12 x 8 in
3-214-0-0.EL	Loose lid	400 x 300 mm 16 x 12 in
3-213-0-0.EL	Loose lid	600 x 400 mm 24 x 16 in
3-215-0-1.EL*	Hinged lid	300 x 200 mm 12 x 8 in
3-944-1.EL*	Hinged lid	200 x 150 mm 8 x 6 in
3-214-0-1.EL	Hinged lid	400 x 300 mm 16 x 12 in
3-213-0-1.EL	Hinged lid	600 x 400 mm 24 x 16 in
3-944-2.EL*	Hook-in lid	200 x 150 mm 8 x 6 in
3-215-0-2.EL*	Hook-in lid	300 x 200 mm 12 x 8 in
3-214-2.EL	Hook-in lid	400 x 300 mm 16 x 12 in
3-213-2.EL	Hook-in lid	600 x 400 mm 24 x 16 in
20-10010.EL	Thermoformed Loose lid	600 x 400 mm 24 x 16 in

\* Produced in Germany



### Flexible printed circuit board holders

The Utz PCB holders are highly accurate and adjustable for printed circuit boards with an internal dimension of 21 x 13 inches and an external dimension of 24 x 15 inches. The grooves of the grid are 2 mm wide and 4 mm deep. The numbered grid system ensures the correct spacing of the loaded circuit boards in the holders.

#### 24 x 15 x 5 in

609 x 381 x 127 mm

Inner dimension: 21.6 x 13.1 x 4.4 in / 548 x 33 x 112 mm

Board slot width: 2 mm

Board slot depth: 4 mm

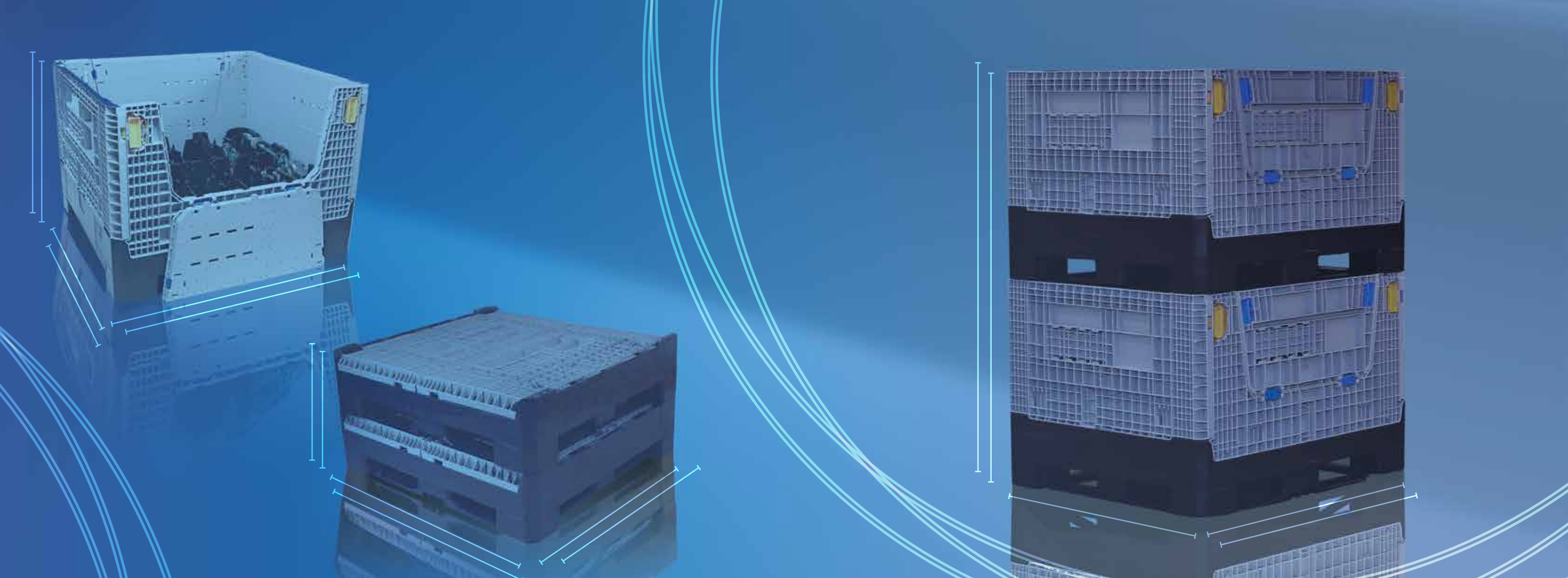
Part number	Usable height	
	w/o lid	w/ lid
50-2415-50-50.EL	4.4 in 112 mm	4.9 in 125 mm

#### Short divider

Part number
9-10200.EL

#### Lid

Part number	Article
50-2415-0.EL	Loose lid
50-2415-1.EL	Hinged lid
50-2415-2.EL	Hook-in lid



## Bulk Containers

80 | Shipping

83 | Modular Design

82 | Utz KLAPA

83 | UTZ GLT



## Bulk containers

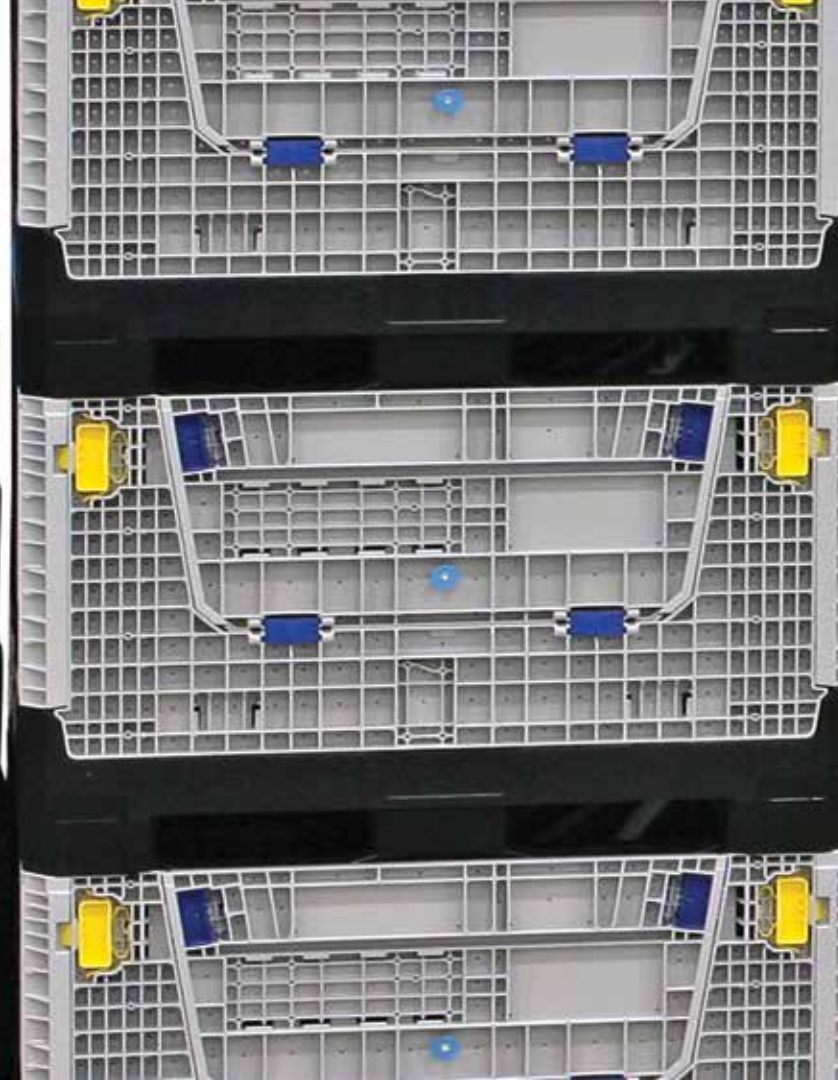
*The future of bulk containers*

The 48" x 45" KLAPA is the next generation collapsible container designed by Utz.

High pressure injection polypropylene and polyethylene provide superior impact resistance to structural foam solutions.

*Highest level of design features*

- Component parts can be replaced individually providing the lowest service cost in the industry
- Compatible with commonly used container systems
- Tested to AIAG RC-9 Specification
- 3:1 return ratio stacked 9 high empty
- Lightweight design — 20% lighter than structural foam alternatives
- Largest access doors in the industry
- Drainage holes in sidewalls and base prevent water accumulation during outdoor storage
- Ergonomically designed latches and assist handle allow easy panel movement
- No specific sequence for folding and unfolding doors
- Label holder, label placard and ID placards are available options
- Available in black or gray

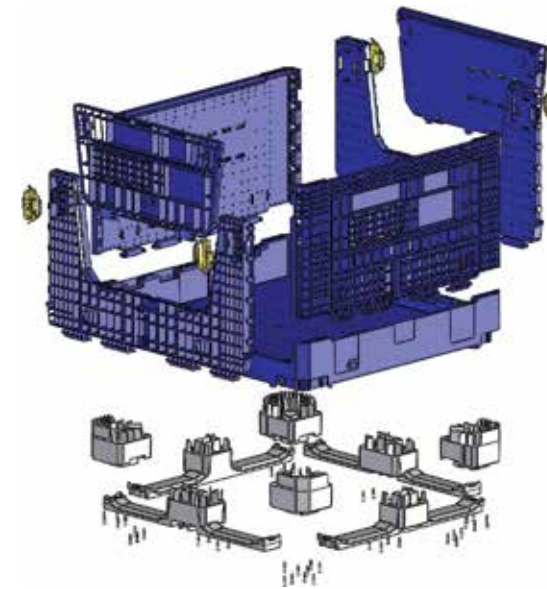


## Shipping return ratio

*Shipping ratio*

Utz offers the most ideal shipping solution in its class per truckload. Our standard 48 x 45 x 34 inch container allows customers to ship 84 containers in the upright position or 252 collapsed containers per truckload, offering a 3:1 return ratio, the most cost effective option in the industry.

Part Number	Description	#/53' trailer collapsed	#/53' trailer upright
34-3230-25-0	32 x 30 x 25 in	504	252
34-3230-34-0	32 x 30 x 34 in	504	189
34-4845-34-0	48 x 45 x 34 in	252	84



## Modular design

*Low maintenance cost*

Modular design allows containers to be built to order with customer specific feet, runner, wall and drop configurations. All components are attached with snap fit or standard fasteners.

*Ergonomics and function*

Ergonomically designed latches, handles and sidewalls allow easy assembly. Walls can fold in any sequence.

Drainage holes in sidewalls and base prevent water from accumulating during outdoor storage. This also provides ventilation for faster part cooling post process.

*Reinforced bottom*

For heavy load conditions, a lateral steel reinforcement can be added to the base for reduced base deflection performance.



**32 x 30 x 25 in**

813 x 762 x 635 mm

Access door:

Long side: 19.5 x 12 in / 495 x 305 mm

Load capacity: 1100 lb / 499 kg

Capacity: 8.73 ft<sup>3</sup> / 248 liters

Weight: approx. 51 lb / approx. 23.1 kg

Model: 2 long runners / 3 feet

Part number	Inner dimension	Collapsed height	Usable height
34-3230-25-0	29.1 x 27.1 x 18.8 in 739 x 688 x 477 mm	13 in 330 mm	18 in 458 mm

Thermoform specialty lid on page 91.

Part number	Outer dimension	Weight
50-3230-0	32 x 30 in 813 x 762 mm	6.5 lb 2.9 kg



**VDA-GLT 1200 x 1000 x 975 mm**

48 x 40 x 38 in

Side access door:

Long side: 770 x 371 mm / 30.3 x 14.6 in

Short side: 570 x 371 mm / 22.4 x 14.6 in

Load capacity: 500 kg / 1100 lb

Collapsed height: 380 mm / 15.0 in

Weight: approx.: 57 kg / approx. 125.7 lb

Part number	Inner dimension	Capacity	Model
34-121010	1120 x 920 x 767 mm 44.1 x 36.2 x 30.2 in	851 liters 30.1 ft <sup>3</sup>	4 feet



**32 x 30 x 34 in**

813 x 762 x 864 mm

Access door:

Long side: 19.5 x 12 in / 495 x 305 mm

Load capacity: 1100 lb / 499 kg

Capacity: 12.7 ft<sup>3</sup> / 360 liters

Weight: approx. 63 lb / approx. 28.6 kg

Model: 2 long runners / 3 feet

Part number	Inner dimension	Collapsed height	Usable height
34-3230-34-0	29.1 x 27.1 x 27.8 in 739 x 688 x 477 mm	13 in 330 mm	27 in 686 mm

Thermoform specialty lid on page 91.

Part number	Outer dimension	Weight
50-3230-0	32 x 30 in 813 x 762 mm	6.5 lb 2.9 kg



**GLT 1200 x 800 x 950 mm**

48 x 32 x 37 in

Side access door:

Long side: 770 x 365 mm / 30.3 x 14.4 in

Short side: 372 x 365 mm / 14.6 x 14.4 in

Load capacity: 500 kg / 1100 lb

Collapsed height: 397 mm / 15.6 in

Weight: approx.: 45 kg / approx. 99.2 lb

Part number	Inner dimension	Capacity	Model
34-1208-5900-01	1120 x 720 x 748 mm 44.1 x 28.3 x 29.4 in	500 liters 17.6 ft <sup>3</sup>	9 feet
34-1208-5000-01	1120 x 720 x 748 mm 44.1 x 28.3 x 29.4 in	500 liters 17.6 ft <sup>3</sup>	2 long runners / 3 feet



**48 x 45 x 34 in**

1219 x 1143 x 864 mm

Access door:

Long side: 31.5 x 16.3 in / 800 x 415 mm

Load capacity: 1500 lb / 680 kg

Capacity: 29.2 ft<sup>3</sup> / 828 liters

Weight: approx. 126 lb / approx. 57.2 kg

Model: runners on all 4 sides

Part number	Inner dimension	Collapsed height	Usable height
34-4845-34-0	44.2 x 41.3 x 27.7 in 1123 x 1050 x 704 mm	13 in 330 mm	27 in 686 mm

Injection molded lid found on page 91.

Part number	Outer dimension	Weight
50-4845-0	48 x 45 in 1219 x 1143 mm	15.6 lb 7.0 kg



**GLT 1200 x 1000 x 900 / 975 mm**

48 x 40 x 35 / 38 in

Side access door:

Long side: 770 x 390 mm / 30.3 x 15.4 in

Short side: 570 x 390 mm / 22.4 x 15.4 in

Load capacity: 500 kg / 1100 lb

Collapsed height: 406 mm / 16.0 in

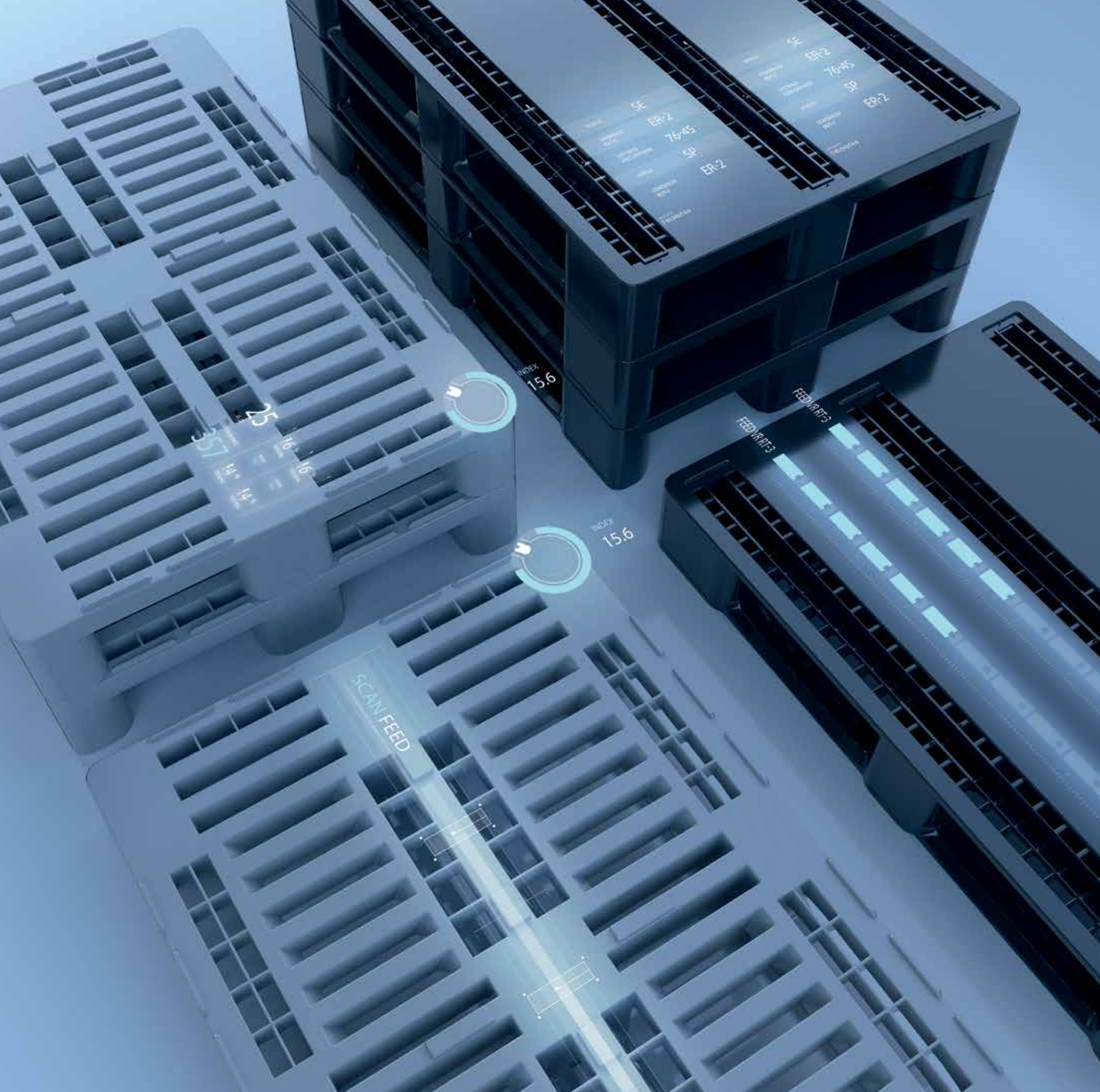
Weight approx.: 50 kg / approx. 110 lb

Part number	Outer dimension	Inner dimension	Capacity	Model
34-1210-5017	1200 x 1000 x 900 mm 48 x 40 x 35.4 in	1120 x 920 x 692 mm 44.1 x 36.2 x 27.2 in	715 liters 25.3 ft <sup>3</sup>	2 long runners / 3 feet
34-1210-5000R	1200 x 1000 x 975 mm 48 x 40 x 38.4 in	1120 x 920 x 767 mm 44.1 x 36.2 x 30.2 in	790 liters 27.9 ft <sup>3</sup>	2 long runners / 3 feet
34-1210-5012R	1200 x 1000 x 900 mm 48 x 40 x 35.4 in	1120 x 920 x 692 mm 44.1 x 36.2 x 27.2 in	715 liters 25.3 ft <sup>3</sup>	9 feet
34-1210-5019	1200 x 1000 x 975 mm 48 x 40 x 38.4 in	1120 x 920 x 767 mm 44.1 x 36.2 x 30.2 in	790 liters 27.9 ft <sup>3</sup>	9 feet

Load capacity information is valid for area loading at 73.4° F.  
We recommend testing the product in advance - Further information at: [info.us@utzgroup.com](mailto:info.us@utzgroup.com)

Load capacity information is valid for area loading at 73.4° F.  
We recommend testing the product in advance - Further information at: [info.us@utzgroup.com](mailto:info.us@utzgroup.com)





## PALLETS

- 86 | Pallets
- 87 | UPAL-A
- 87 | UPAL-N
- 88 | SP14
- 88 | UPAL-H
- 90 | UPAL-I
- 90 | UPAL-S
- 91 | Pallet Lids



## Steadfast in all situations

Plastic pallets have key advantages: they have constant weight, are robust and durable, have longer life than wooden pallets and, with metal reinforcing, are particularly sturdy and suitable for use in high-rack warehousing.

Plastic pallets can be produced in a version which is electrically conductive or equipped with a non-slip top deck. Fully enclosed pallets are easy to clean and are particularly suitable for food, hygiene and clean room sectors.



### utz UPAL-A



### UPAL-A Automation friendly and rackable

The UPAL-A is compatible with automated and racking systems without the need of expensive pallet support boards or slave pallets. The pallet has the versatility to be racked in both 40" and 48" orientations. The design of the runners under surface provides optimal performance on belt conveyors, rollers and wheel conveyance.

### UPAL-A • 48 x 40 x 6 in

1200 x 1000 x 152 mm

Part number	Model	Runners	Top deck	Weight
33-4840-1	non-reinforced	6	smooth, solid	43.0 lb / 19.6 kg
33-4840-100	reinforced	6	smooth, solid	48.0 lb / 22.1 kg
33-4840-2	non-reinforced	3	smooth, solid	39 lb / 17.8 kg
33-4840-200	reinforced	3	smooth, solid	44 lb / 20.3 kg


2 or 4 seat belts optional

Load capacity reinforced

**static** 30000 lb / 13607 kg

**dynamic** 6000 lb / 2722 kg

**in racking** 2500 lb / 1134 kg

Racking weight is based on uniform loads.  
We recommend testing the product in specifically intended environment.  
Available in FDA approved, recycled and ESD materials. 

### UPAL-N Space saving, automotive pallet, compatible with Utz straight wall containers

The UPAL-N is a nesting pallet designed for the demands of the automotive industry and other industrial markets. Its durable design extends product life thus reducing cost. The feet are designed with large radius corners and scalloped sidewalls for superior strength.

### utz UPAL-N



### UPAL-N • 48 x 45 x 6 in

1230 x 1154 x 152 mm


Part number	Return ratio	Feet	Top deck	Weight
33-4845.000	2.0 : 1	9	open with safety edge	36.3 lb / 16.5 kg

2 or 4 seat belts optional

Load capacity

**static** 30000 lb / 13607 kg

**dynamic** 4000 lb / 1814 kg

Available in FDA approved, recycled and ESD materials. 

Racking weights are based on uniform loads.

Load capacity information is valid for area loading at 73.4° F.

We recommend testing the product in advance - Further information at: [info.us@utzgroup.com](mailto:info.us@utzgroup.com)



*SP14 Heavy duty structural automotive pallet*

The SP14 is a robust automotive and racking solution compatible with Utz straight wall containers. Ford Approved pallet.

SP14



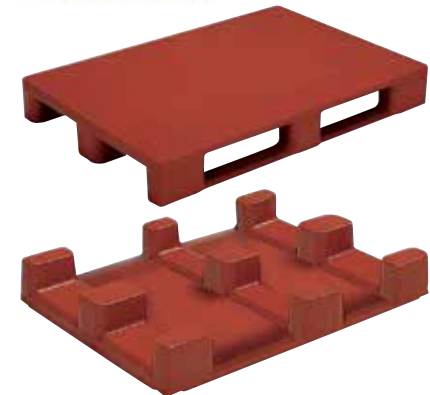
**SP14 • 48 x 45 x 6 in**  
1200 x 1143 x 152 mm

Part number	Model	Runners	Top deck	Weight
33-SP14	ford approved	6	grid	65.0 lb / 29.5 kg
2 or 4 seat belts optional				
Load capacity				
<b>static</b>	32000 lb / 14515 kg			
<b>dynamic</b>	8000 lb / 3629 kg			

*UPAL-H Clean, stable and closed all around*

The UPAL-H is closed on all sides, therefore easy to clean and frequently used in the food, hygiene and clean room Markets. Due to its reinforcement with metal profiles, the pallet is suitable for high-bay spacing.

utz UPAL-H

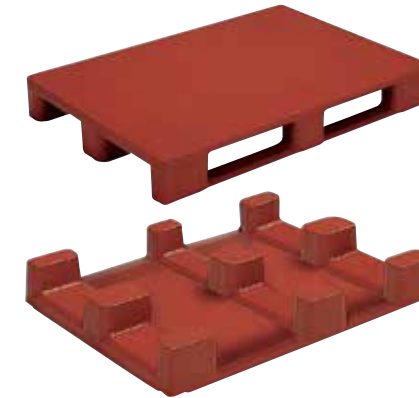


**UPAL-H • 1200 x 1000 x 160 mm**  
48 x 40 x 6.3 in

Part number	Model	Runner	Top deck	Weight
33-1210-630 R	non-reinforced	3	smooth	22.5 kg / 49.5 lb
33-1210-634 R	reinforced	3	smooth	26.0 kg / 57.2 lb
33-1210-642 R	non-reinforced	3	with safety edge	22.5 kg / 49.5 lb
33-1210-643 R	reinforced	3	with safety edge	26.0 kg / 57.2 lb
33-1210-600 R	non-reinforced	9	smooth	20.0 kg / 44.0 lb
33-1210-604 R	reinforced	9	smooth	24.0 kg / 52.8 lb
Load capacity				
<b>static</b>	non-reinforced	reinforced		
	6000 kg / 13200 lb	7500 kg / 16500 lb		
<b>dynamic</b>	1500 kg / 3300 lb			
<b>in racking</b>	500 kg / 1100 lb			

Racking weights are based on uniform loads.  
Load capacity information is valid for area loading at 73.4° F.  
We recommend testing the product in advance - Further information at: [info.us@utzgroup.com](mailto:info.us@utzgroup.com)

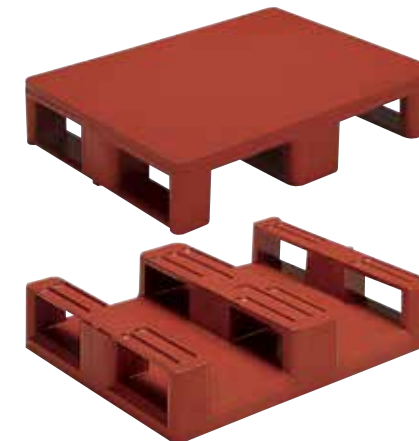
utz UPAL-H



**UPAL-H • 1200 x 800 x 160 mm**  
48 x 32 x 6.3 in

Part number	Model	Runner	Top deck	Weight
33-1208N-630-0000	Rnon-reinforced	3	smooth	15.5 kg / 34.1 lb
33-1208N-642-0000	Rnon-reinforced	3	with safety edge	15.5 kg / 34.1 lb
33-1208N-643-0500	Rreinforced	3	with safety edge	18.5 kg / 40.7 lb
33-1208N-634-0500	Rreinforced	3	smooth	18.5 kg / 40.7 lb
33-1208N-600-0000	Rnon-reinforced	9	smooth	14.5 kg / 31.9 lb
33-1208N-609-0500	Rreinforced	9	with safety edge	17.0 kg / 37.9 lb
Load capacity				
<b>static</b>	non-reinforced	reinforced		
	6000 kg / 13200 lb	7500 kg / 16500 lb		
<b>dynamic</b>	1500 kg / 3300 lb			
<b>in racking</b>	500 kg / 1100 lb			

utz UPAL-H



**UPAL-H • 800 x 600 x 160 mm**  
32 x 24 x 6.3 in  
3 runners

Part number	Model	Top deck	Weight
33-8060-630	non-reinforced	smooth	160 mm / 6.3 in 9.0 kg / 19.8 lb
33-8060-642	non-reinforced	with safety edge	160 mm / 6.3 in 9.0 kg / 19.8 lb
33-8060-632	non-reinforced	with safety edge and 4 recessed areas	160 mm / 6.3 in 9.0 kg / 19.8 lb
Load capacity			
<b>static</b>	3000 kg / 6600 lb		
<b>dynamic</b>	750 kg / 1650 lb		
<b>in racking</b>	500 kg / 1100 lb		

Racking weights are based on uniform loads.  
Load capacity information is valid for area loading at 73.4° F.  
We recommend testing the product in advance - Further information at: [info.us@utzgroup.com](mailto:info.us@utzgroup.com)

utz UPAL-I



**UPAL-I Robust, resilient and versatile**

The UPAL-I is a robust industrial pallet, which is particularly secure in handling. It has a long service life due to its robust construction. Metal profiles can be inserted, depending on requirements, making the pallet suitable for high-bay storage. To protect against slipping, anti-slip pins can be attached to the upper deck and the forklift area.

**UPAL-I • 1200 x 1000 x 150 mm**

48 x 40 x 6 in

Part number	Model	Runner	Top deck	Weight
33-1210I-02	non-reinforced	3	open-work, smooth	14.5 kg / 32 lb
33-1210I-03	non-reinforced	3	outboard safety edge	14.5 kg / 32 lb
<b>Load capacity</b>				
<b>static</b>	5000 kg / 11000 lb			
<b>dynamic</b>	1500 kg / 3300 lb			
<b>in racking</b>	500 kg / 1100 lb			

**UPAL-I • 1200 x 800 x 150 mm**

48 x 31 x 6 in

Part number	Model	Runner	Top deck	Weight
33-1208I-00 R	non-reinforced	3	open-work, smooth	11.0 kg / 24 lb
33-1208I-01 R	non-reinforced	3	outboard safety edge	11.0 kg / 24 lb
<b>Load capacity</b>				
<b>static</b>	5000 kg / 11000 lb			
<b>dynamic</b>	1000 kg / 2200 lb			
<b>in racking</b>	500 kg / 1100 lb			


**UPAL-S Flexible and reinforced, suitable for shelving**

The UPAL-S is a robust and resilient pallet with increased stability due to metal profiles, which can be inserted into designated recesses. This reinforcement makes the UPAL-S suitable for high-bay storage. The pallet can be equipped with anti-slip strips.

**UPAL-S • 1200 x 800 x 160 mm**

48 x 32 x 6.3 in

Part number	Model	Runner	Top deck	Weight
33-1208S-639-000 R	non-reinforced	3	interrupted safety edge, with drain holes	14.0 kg 30.8 lb
33-1208S-739-000 R	non-reinforced	3	interrupted safety edge, with drain holes	14.0 kg 30.8 lb
33-1208S-939-000 R	reinforced	3	Continuous 20mm safety edge, with drain holes	14.0 kg 30.8 lb
<b>Load capacity</b>				
	non-reinforced	reinforced		
<b>static</b>	5000 kg / 11000 lb		7500 kg / 16500 lb	
<b>dynamic</b>	1500 kg / 3300 lb		1500 kg / 3300 lb	
<b>in racking</b>	500 kg / 1100 lb		1300 kg / 2850 lb	

 UPAL-S is available in ESD.

utz UPAL-S



Racking weights are based on uniform loads.

Load capacity information is valid for area loading at 73.4° F.

We recommend testing the product in advance - Further information at: [info.us@utzgroup.com](mailto:info.us@utzgroup.com)

**Pallet Lids**



Part number	Outer dimension	Weight
50-4845	48 x 45 in 1200 x 1100 mm	15.6 lb 7.0 kg



Part number	Outer dimension	Weight
21-10014	1200 x 1000 mm 48 x 40 in	11.0 lb 5.0 kg



Part number	Outer dimension	Weight
21-10041	1200 x 800 mm 48 x 32 in	9.0 lb 4.1 kg



Part number	Outer dimension	Weight
21-10085	800 x 600 mm 32 x 24 in	4.0 lb 1.8 kg





## Space Saving

### Nestable

- 95 | 600 x 400 x 253 mm
- 95 | 600 x 400 x 263 mm
- 95 | 600 x 400 x 318 mm
- 95 | 600 x 400 x 365 mm

### Collapsible

- 96 | 400 x 300 x 225 mm
- 97 | 800 x 600 x 220 mm
- 97 | 800 x 600 x 325 mm
- 97 | 800 x 600 x 465 mm

### Foldable

- 99 | 400 x 300 x 225 mm
- 99 | 400 x 300 x 260 mm
- 99 | 400 x 300 x 300 mm
- 100 | 600 x 400 x 225 mm
- 100 | 600 x 400 x 260 mm
- 100 | 600 x 400 x 300 mm
- 100 | 600 x 400 x 320 mm
- 101 | Lids

## Stackable-Nestable Containers — methodical space savings

### Space-saving when stacked

Nesting and stack/nest containers are rigid containers. Both can be nested when empty, thus allowing a significant reduction in volume.

### Nesting containers

Nesting containers can be stacked on top of the lid or when empty, nested within one another resulting in up to 75% reduction of the original volume.



### 600 x 400 x 253 mm

24 x 15.75 x 9.96 in

Inner dimension

Top: 567 x 376 mm / 22 x 14 in

Base: 547 x 348 mm / 21.5 in 13.7in

Walls: slotted

Handles: 2 handle slots

Weight: 1.9 kg / 6.1 lb

Capacity: 50 liters / 1.7 ft<sup>3</sup>

Part number	Base	Usable height	Stacking Height
45-6425	flat	227 mm / 9.0 in	242 mm / 9.5 in

#### Dividers

Part Number	Description
45-4000-1	short solid divider
45-4000-2	short slotted divider



### 600 x 400 x 263 mm

24 x 16 x 10.4 in

Inner dimension

Top: 546 x 371 mm / 21.6 x 14.6 in

Base: 520 x 354 mm / 20.5 in 14 in

Walls: solid

Handles: 2 shell handles

Weight: 2.8 kg / 6.2 lb

Capacity: 47 liters / 1.7 ft<sup>3</sup>

Part number	Base	Usable height	Stacking Height	Nesting Height
43-6426	flat	235 mm / 9.25 in	251 mm / 9.9 in	109 mm / 4.3 in



### 600 x 400 x 318 mm

24 x 16 x 12.1 in

Inner dimension

Top: 548 x 371 mm / 21.6 x 14.6 in

Base: 516 x 351 mm / 20.3 in 13.8 in

Walls: solid

Handles: 2 shell handles

Weight: 3.1 kg / 6.8 lb

Capacity: 56 liters / 2.0 ft<sup>3</sup>

Part number	Base	Usable height	Stacking Height	Nesting Height
43-6431-2	flat	280 mm / 11 in	295 mm / 9.9 in	109 mm / 4.3 in

Reinforced base and slotted sides upon request.



### 600 x 400 x 365 mm

24 x 16 x 14.4 in

Inner dimension

Top: 550 x 365 mm / 21.6 x 14.4 in

Base: 252 x 340 mm / 20.5 in 14 in

Walls: solid

Handles: 2 shell handles

Weight: 3.0 kg / 6.6 lb

Capacity: 66 liters / 2.3 ft<sup>3</sup>

Part number	Base	Usable height	Stacking Height	Nesting Height
101-6040-365	flat	338 mm / 13.3 in	353 mm / 13.9 in	125 mm / 4.9 in





### Collapsible container

The collapsible container is the perfect solution for high volume, lighter weight products requiring transportation. The container provides robust stacking features of a straight wall container, providing secure unit loads during transport.

When empty, collapsible containers allow for space-savings of up to 75% of the original volume, resulting in significantly reduced logistics costs. Since transport and storage space are often scarce and expensive, the savings will exceed the purchase costs in a surprisingly short time.



### 400 x 300 x 225 mm

16 x 12 x 8.9 in  
 Inner dimension: 356 x 257 x 217 mm / 14 x 10 x 8.5 in  
 Usable internal height in stack: 204 mm / 8 in  
 Weight: 2.0 kg / 4.4 lb  
 Capacity: 19 liters / 0.67 ft<sup>3</sup>  
 Foldable Height: 89 mm / 3.5 in

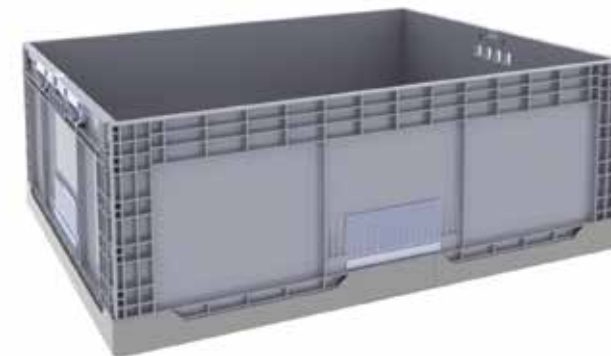
Part number	Locking	Foldable height
34-4322-0	fitted	89 mm / 3.5 in



### 800 x 600 x 220 mm

32 x 24 x 8.7 in  
 Inner dimension: 770 x 570 x 205 mm / 30.3 x 22.4 x 8.1 in  
 Weight: 4.6 kg / 10.1 lb  
 Capacity: 90 liters / 3.2 ft<sup>3</sup>

Part number	Collapsed height
9-09014-0220	50 mm / 2 in



### 800 x 600 x 325 mm

32 x 24 x 12.8 in  
 Inner dimension: 770 x 570 x 310 mm / 30.3 x 22.4 x 12.2 in  
 Weight: 5.5 kg / 12.1 lb  
 Capacity: 136 liters / 4.8 ft<sup>3</sup>

Part number	Collapsed height
9-09014-0325	50 mm / 2 in



### 800 x 600 x 465 mm

32 x 24 x 18.3 in  
 Inner dimension: 760 x 560 x 449 mm / 29.9 x 22.0 x 17.7 in  
 Weight: 6.9 kg / 15.2 lb  
 Capacity: 191 liters / 6.7 ft<sup>3</sup>

Part number	Collapsed height
34-8646-101	120 mm / 4.7 in

Lid found on page 67.

Part number	Outer dimension	Weight
21-10085	800 x 600 mm 32 x 24 in	4.0 lb 1.8 kg



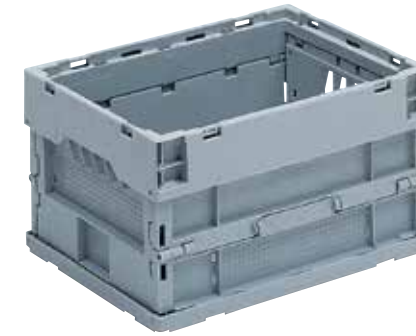


## Foldable containers simple, space-saving solutions

*Save space when transporting empty containers*

When delivering to branch locations, empty containers are often returned and placed in storage.

Foldable containers can significantly improve the efficient utilization of available transport and storage space. When empty, foldable containers allow for space savings of up to 75% of the original volume.



### 400 x 300 x 225 mm

16 x 12 x 8.9 in

Inner dimension: 356 x 257 x 217 mm / 14 x 10 x 8.5 in

Usable internal height in stack: 204 mm / 8 in

Weight: 2.0 kg / 4.4 lb

Capacity: 19 liters / 0.67 ft<sup>3</sup>

Foldable Height: 89 mm / 3.5 in

Part number	Locking	Foldable height
34-4322-0	fitted	89 mm / 3.5 in



### 400 x 300 x 260 mm

16 x 12 x 10.2 in

Inner dimension: 356 x 257 x 257 mm / 14.0 x 10 x 10.1 in

Usable internal height in stack: 244 mm / 9.6 in

Weight: 2.1 kg / 4.6 lb

Capacity: 23 liters / 0.81 ft<sup>3</sup>

Foldable Height: 89 mm / 3.5 in

Part number	Locking	Foldable height
34-4326-0	fitted	89 mm / 3.5 in



### 400 x 300 x 300 mm

16 x 12 x 11.8 in

Inner dimension: 356 x 257 x 297 mm / 14.0 x 10.1 x 11.6 in

Usable internal height in stack: 284 mm / 11.2 in

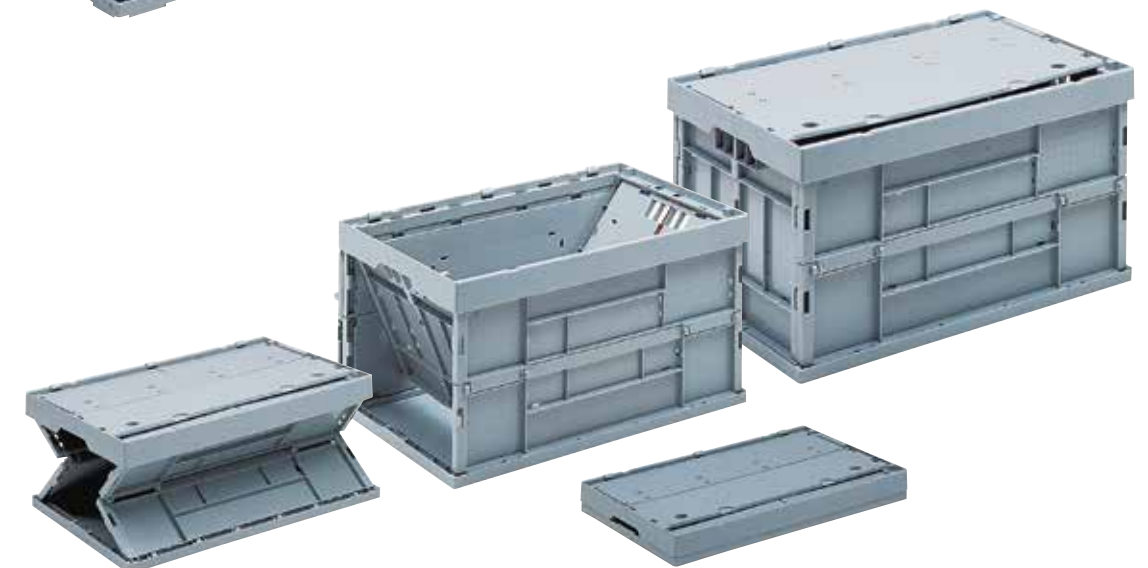
Weight: 2.3 kg / 5.1 lb

Capacity: 28 liters / 0.92 ft<sup>3</sup>

Foldable Height: 89 mm / 3.5 in

Part number	Locking	Foldable height
34-4330-0	fitted	89 mm / 3.5 in

*Reinforced base and slotted sides upon request.*







### 600 x 400 x 225 mm

24 x 16 x 8.9 in

Inner dimension: 556 x 356 x 217 mm / 21.9 x 14.1 x 8.5 in

Usable internal Height in stack: 204 mm / 8 in

Weight: 2.6 kg / 5.7 lb

Capacity: 42 liters / 1.5 ft<sup>3</sup>

Part number	Locking	Foldable height
34-6422-10	none	72 mm / 2.8 in
34-6422-0	fitted	72 mm / 2.8 in



### 600 x 400 x 260 mm

24 x 16 x 10.2 in

Inner dimension: 556 x 356 x 257 mm / 21.9 x 14.1 x 10 in

Usable internal Height in stack: 244 mm / 9.6 in

Weight: 2.8 kg / 6.2 lb

Capacity: 49 liters / 1.7 ft<sup>3</sup>

Part number	Locking	Foldable height
34-6426-10	none	72 mm / 2.8 in
34-6426-0	fitted	72 mm / 2.8 in



### 600 x 400 x 300 mm

24 x 16 x 11.8 in

Inner dimension: 552 x 356 x 297 mm / 21.7 x 14 x 11.7 in

Usable internal Height in stack: 284 mm / 11.2 in

Weight: 2.6 kg / 5.7 lb

Capacity: 58 liters / 2 ft<sup>3</sup>

Part number	Locking	Foldable height
34-6430N	fitted	78 mm / 3.1 in



### 600 x 400 x 320 mm

24 x 16 x 12.6 in

Inner dimension: 555 x 355 x 315 mm / 22 x 13.9 x 12.4 in

Usable internal Height in stack: 298 mm / 12.4 in

Weight: 2.8 kg / 6.2 lb

Capacity: 63 liters / 2.2 ft<sup>3</sup>

Part number	Locking	Foldable height
34-6432-32	none	59 mm / 2.3 in

Reinforced base and slotted sides upon request.

## Lids

Lid, two-piece,  
hinged on long side

Part number	Nom. size	Model
34-4301-1	400 x 300 mm 16 x 12 in	with opener hole
34-4301-11	400 x 300 mm 16 x 12 in	with handle lug
34-6401-1	600 x 400 mm 24 x 16 in	with opener hole
34-6401-11	600 x 400 mm 24 x 16 in	with handle lug



Lid, two-piece,  
hinged on short side

Part number	Nom. size	Model
34-4301-2	400 x 300 mm 16 x 12 in	with opener hole
34-4301-21	400 x 300 mm 16 x 12 in	with handle lug
34-6401-2	600 x 400 mm 24 x 16 in	with opener hole
34-6401-21	600 x 400 mm 24 x 16 in	with handle lug



Loose lid

Part number	Outer dimension
3-213Z-0	600 x 400 mm 24 x 16 in









# North American Catalog 2023



[utzgroup.com](http://utzgroup.com)

Georg Utz, Inc.  
14000 N 250 W, Edinburgh, IN 46124  
Phone 812 526 2240 Fax 812 526 2428  
info.us@utzgroup.com

