



INNOVATIVE PRODUCTS FOR THE LOADING DOCK INDUSTRY



PROUDLY  
MANUFACTURED  
IN THE USA

# MxV™

**ENERGY-ABSORBING DOCK DOOR**

PATENT NUMBER 6,988,528

## The Next Generation Knockout Dock Door

Today's loading docks are handling more traffic than ever before. This higher volume of traffic has increased door damage, resulting in a loss of production and higher maintenance cost. MxV's innovative knockout design allows it to flex and release upon impact without damage to the door or track.

### MxV™ Features –

**Patented Polymer guide system** – MxV uses a brush instead of rollers, allowing for a continuous seal and a long lasting design that has the ability to knockout without costly door damage.

**High Performance** – MxV's rugged design resists damage from impact better than other knockout dock doors.

**Exclusive Self-Correcting Design** – Simply open and close to re-set, no spring loaded rollers or pins to maintain.

**Flexible, 3" thick, insulated panels** – MxV's panels are lightweight and insulated, suitable for refrigerated loading docks.

**MxV's unique design helps to improve productivity on today's busy loading docks** by reducing maintenance calls and avoiding costly downtime for door replacement or repair.







INNOVATIVE PRODUCTS FOR THE LOADING DOCK INDUSTRY

SPECIFICATIONS

### Dock Door

- Panels:** 3" thick, UV Inhibited, Weather Resistant PVC
- Insulation:** Closed Cell Polyurethane R-22
- Door sizes:** Up to 10' Wide X 12' High
- Door Reset:** Self Correcting – Resets by opening and closing the door

- Brush Seals:** Nylon Header
- Side Brush Seals:** Polypropylene
- End Cap:** Injection molded plastic
- Track:** PVC

- Knockout Capability:** Full – top to bottom, inside or out
- Lock:** Optional – Offers intruder security
- Door Styles:** Available in true vertical, tilt back and high lift configurations

### Torsion Springs

- Spring Cycle:** 25 K (Standard)
- Door Cables:** 5/32" - 7 x 19 galvanized steel
- Shaft:** 1" keyed hollow shaft
- Bearings:** 1" UCF Precision Flange Bearing

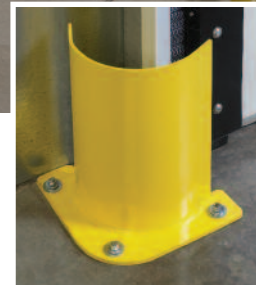
### Counterweight

- Counterweights:** Round bar stock
- Door Cables:** 5/32" - 7 x 19 galvanized steel
- Pulley Brackets:** 12-gauge steel box construction with guides
- Pulley:** 6" Delrin with needle roller bearings
- Counterweight Cables:** 3/16" – 7"x19" galvanized steel includes Cable Cop and safety cog
- Shaft:** 1" keyed hollow shaft
- Bearings:** 1" UCF Precision flange bearing



OPTIONS

**Vision Panel –**  
is insulated and offers the added safety of visible verification of truck activity.



**Track Guard –**  
protects the base of the track in an area prone to collision damage.

Check out our other dock doors



A Product of  
  
 340 Gateway Park Drive  
 North Syracuse, NY 13212  
 Phone: 315-463-7348  
 Fax: 315-463-8559  
 www.dlmanufacturing.com

TOLL FREE 866-235-7468

 PROUDLY MANUFACTURED IN THE USA 080817

Visit [www.dlmanufacturing.com](http://www.dlmanufacturing.com) to view our complete line of loading dock products.