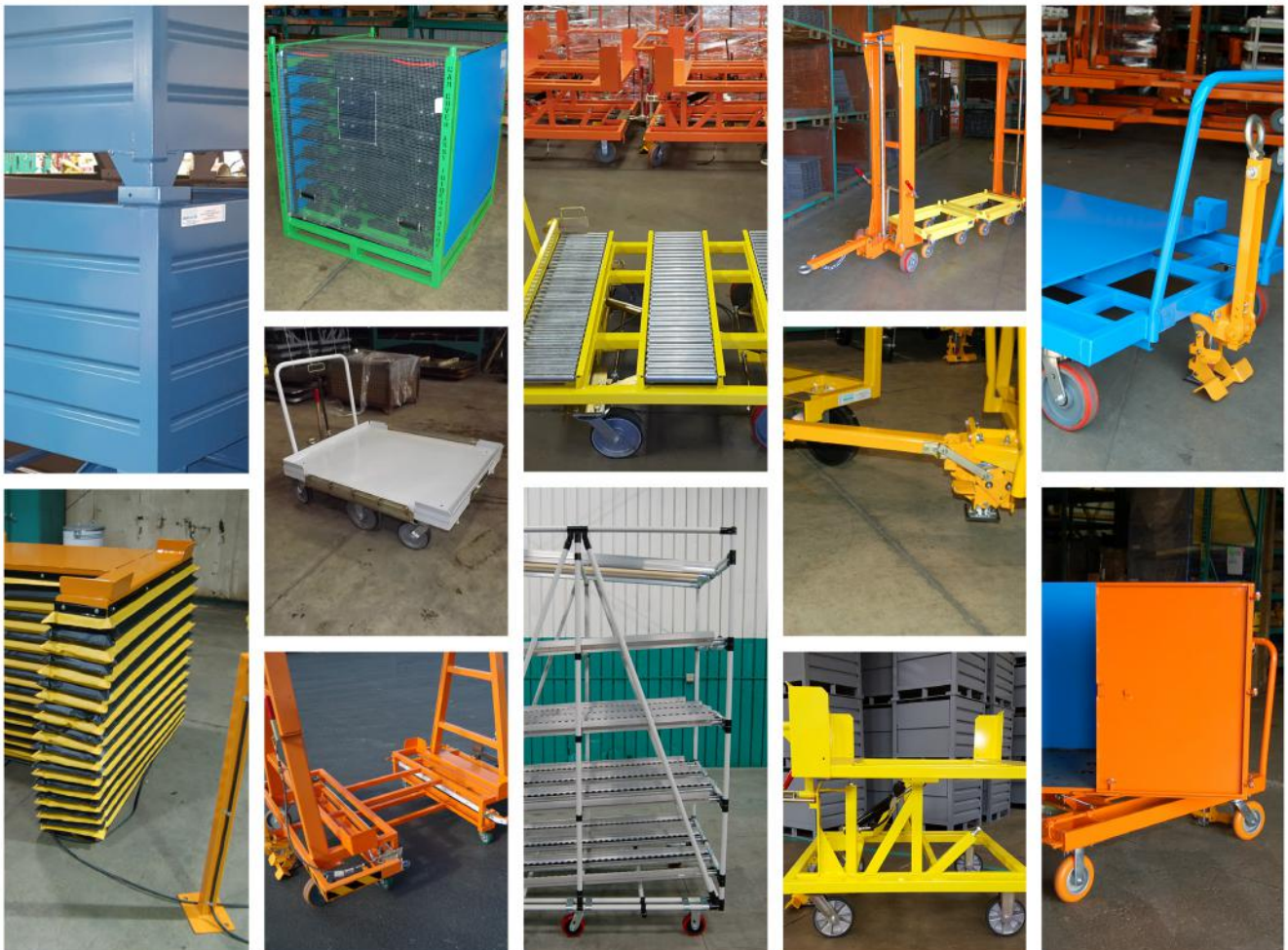




# MATERIAL HANDLING SOLUTIONS

[www.topperindustrial.com](http://www.topperindustrial.com)

The best single source company that will **DESIGN & BUILD** all of your material handling equipment needs.



**"Keeping Your Material Moving."**

# CUSTOM-BUILT

**Topper Industrial is a leading manufacturer of material handling equipment and a pioneer in fork truck free cart delivery in North America.**

Topper Industrial specializes in engineered to order material handling products, such as Industrial Carts (Mother Daughter Cart Systems, Quad Steer Carts or Tracking Carts, Specialized Delivery Carts, Transfer Carts with Roller Deck, Static Carts, Rotation Carts, Tilt Carts or Kitting Carts), Industrial Cart Components (Parts Department), Industrial Containers (Corrugated & Wire Mesh Containers), Pallets, Cart Lift/Tilt Systems, Racking and Tube and Joint.

To find more pictures and videos of product applications, please visit

**[www.topperindustrial.com](http://www.topperindustrial.com)**



## Industrial Carts

### STATIC CARTS



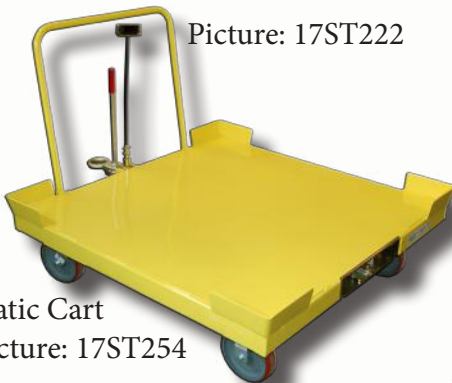
Static Cart w Container  
Picture: 17ST222



Special Feature: Elevated Wood Deck  
Picture: 17ST223



Special Feature: Low Boy Design  
Picture: 17ST224



Static Cart  
Picture: 17ST254



Special Feature: Fixed Tilt Cart  
Picture: 17ST225



Static Cart  
Picture: 17ST226

1



Contact us at [sales@topperindustrial.com](mailto:sales@topperindustrial.com)

# QUAD STEER CARTS



Quad Steer Cart  
Picture: 17QS227



Special Feature: QS w Shelves  
Picture: 17QS228



Quad Steer Cart  
Picture: 17QS286



Special Feature: QS w Railings  
Picture: 17QS230



Special Feature: QS w Shelves  
& Compartments Picture: 17QS231



Elevated Quad Steer Cart  
Picture: 17QS232



# TILT CARTS

Special Feature:  
Multiple Angle Tilt  
Picture: 17TC233



Special Feature:  
Low Boy Tilt  
Picture: 17TC234



Special Feature:  
SideTilt  
Picture: 17TC235



Tilt Cart  
Picture: 17TC236



Special Feature:  
Low Boy Tilt  
Picture: 17TC237



Tilt Cart  
Picture: 17TC282

Most Topper products are engineered to order!



# ROTATE CARTS

Rotate Cart  
Picture: 17RC239



Rotate Cart  
Picture: 17RC240



Rotate Cart  
Picture: 17RC241



Rotate Cart  
Picture: 17RC242



Special Feature: w Extendable Handle  
Picture: 17RC243



Rotate Cart  
Picture: 17RC244



Topper can design and build to your exact needs!

# TRANSFER CARTS



Daughter Transfer Cart  
Picture: 17TRC245



Special Feature: Quad Steering  
Picture: 17TRC246



Transfer Cart Pic: 17TRC247



Transfer Cart  
Picture: 17TRC248



Transfer Cart  
Picture: 17TRC250



Powered Roller Transfer Cart  
Picture: 17TRC280



# MOTHER DAUGHTER CART SYSTEMS

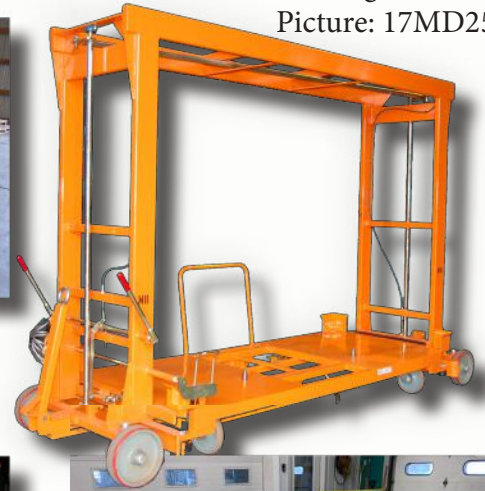
Pass Through Mother Cart  
Picture: 17MD253



Walk Through Mother Cart  
Picture: 17MD281



Caster Steer Corral Cart  
Picture: 17MD252



Walk Through Mother Cart  
Picture: 17MD200



Ride On Caster Steer  
Corral Cart  
Picture: 17MD202



Low Profile Mother w Powered  
Daughter Ejector  
Picture: 21MD282



Low Profile Mother Cart  
Picture: 17MD283



Walk Through Mother Cart  
Picture: 17MD257



Caster Steer Corral Cart  
Picture: 17MD258



Walk Through Mother Cart  
Picture: 17MD259



Walk Through Mother Cart  
Picture: 17MD201



Ride On Mother Cart  
Picture: 17MD260

For more product photos and video applications,  
visit [www.topperindustrial.com](http://www.topperindustrial.com). Content added weekly.



# Why the Industry is moving towards FORK TRUCK FREE Cart Delivery Systems?

Fork Truck Free (FTF) means to use minimal to no fork trucks in the movement of material throughout a plant floor. Fork Truck Free Cart Delivery is the use of industrial cart systems to move material as an alternative to the use of and dependency on fork trucks. Though it is a very thorough, thought-out process to convert material movement to Fork Truck Free, it is becoming a significant industry trend. This is due to the many benefits that result from implementing Fork Truck Free applications with cart delivery.

For more information on the benefits of Fork Truck Free applications, please visit

[www.forktruckfree.com](http://www.forktruckfree.com).

## UNIQUE CARTS



Rotate Quad Steer  
Picture: 17UC261



Bi-Directional Cart  
Picture: 17UC262



Low Boy Bi-Directional Cart  
Picture: 17UC263



Gravity Flow Rack  
Picture: 17TT02



Quad Steer w Drop Gates  
Picture: 17UC265



Rotate Fixed Tilt Cart  
Picture: 17UC266



# Cart Components

## COMMON TOW PACKAGES



Tip-Down Plate Ring Tow Pack.  
Picture: 17CP01



Retractable Pintle Ring Tow Pack.  
Picture: 17CP02



Tip-Down Pintle Ring Tow Pack.  
Picture: 17CP03

## UNIQUE HITCHES/ COUPLERS



AGV Towbar  
Picture: 17CP16



Pin & Clevis  
Picture: 17CP17



Pintle Ring & Coupler  
Picture: 17CP20



Ball Hitch  
Picture: 17CP21

## SERVICES OFFERED

Many of Topper Industrial's products are engineered to order.

Topper Industrial's staff is eager to help create solutions to your material flow problems.

**Contact us today at [sales@topperindustrial.com](mailto:sales@topperindustrial.com).**

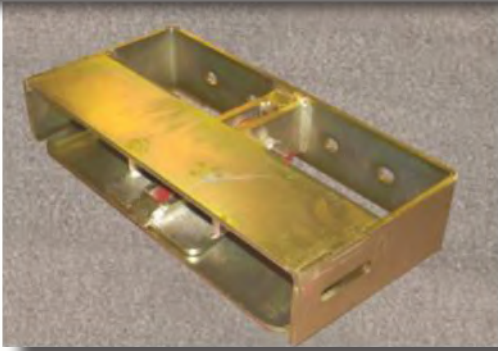
Topper Industrial designs all products with ergonomics in mind, focusing on ease of use and best positioning of material to get the job done.

Topper Industrial's Services include, but are not limited to:



Design & Customization  
Manufacturing & Production

## COMMON HITCHES/ COUPLERS



Recessed Coupler  
Picture: 17CP05



Pintle Coupler  
Picture: 17CP04

From manufacturing the entire cart to just its components, Topper can help with ALL your industrial cart needs.

## COMMON BRAKES



Cast Iron Floor Brake  
Picture: 17CP07



Standard Floor Brake  
Picture: 17CP06



DC Floor Brake  
Picture: 17CP22

Contact [sales@topperindustrial.com](mailto:sales@topperindustrial.com) with any questions about any Topper Products.

## COMMON WHEELS/ CASTERS



Pneumatic Foam Filled  
Picture: 17SP10



Solid Rubber  
Picture: 17SP11



12" Poly Mold-On Stl  
Picture: 17SP12



HD Press-On Rubber  
Picture: 17SP13



ESD Caster  
Picture: SP23



4" Grey Poly  
Picture: 17SP18



Topper RS Caster  
Swivel  
Picture 17SP16



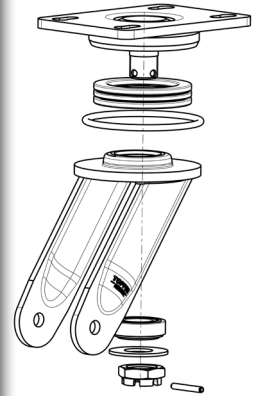
Topper RS Caster  
Rigid  
Picture: 17SP17



## Featured Product:

# TOPPSTER RS RENNSPORT

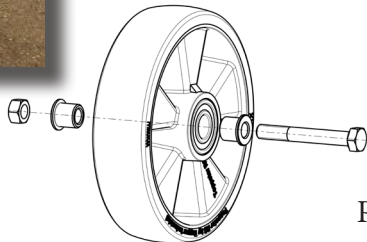
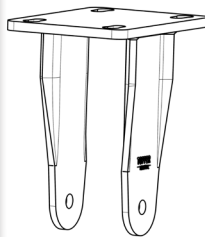
- Minimizes Push/Pull Forces
- High Speed Towing
- High Dynamic Loads
- High Resistance Wear
- High Cut and Tear Resistance
- High Resistance to Oils, Greases & Solvents.
- Hydrolysis and Microbe Resistant
- High Rebound Resilience
- Flexibility in High Temperatures



Topper RS Caster Swivel



Topper RS Caster Rigid



Pro Alignment Plate

*Available in*  
**8" & 10"**  
**diameter!**

**Constructed of Precision Heavy Duty Rig, Precision Sealed Bearing & Aluminum Wheel for No Corrosion.**

Every RS Caster endures a debonding press test before shipment to ensure reliable wheels that can be depended on. Each caster is made from specially formulated Poly that does not pick up floor debris. The dark grey color does not show dirt. All caster bearings are sealed precision for smooth and reliable long-term operation. Both the rigid and swivel Rennsport series have Topper Industrial's unique dual bolt pattern that makes for perfect alignment.

World's BEST caster!



# Containers / Pallets

## STANDARD CONTAINERS & PALLETS



51 Series Corrugated Container



51 Series Corrugated Container & Drop Gate



51 Series Corrugated Container & Hopper Front



51 Series Corrugated Container & Lifting Lugs

Contact [sales@topperindustrial.com](mailto:sales@topperindustrial.com) for any of your standard or custom container requirements.

Topper can help with ALL your material handling equipment needs.



SP4248 Open Hat Pallet

## CUSTOM CONTAINERS & PALLETS



Pallet  
Picture: 17CM59



Three Sided Bin  
Picture: 17CM60



Container w Remove-able Side  
Picture: 17CM78



Cont. w Lifting Lugs & Skid Bars  
Picture: 17CM62



Custom Liquid Tight w Fork Tubes  
Picture: 17CM63



Custom Liquid Tight w Scrap Bins  
Picture: 17CM64



Custom Smooth Containers  
Picture: 17CM65



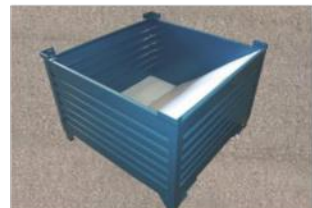
Custom Enclosed Container  
Picture: 17CM66



Custom Wire Mesh Container  
Picture: CM79



Custom Container  
Picture: 17CM68



Custom Container w Funnel Insert  
Picture: 17CM69



Small Parts Bin  
Picture: 17CM70

# Industrial Cart Lift / Tilts



Double Lift & Rotate  
Picture: 17LT18



Roll On Tilter  
Picture: 17LT19



Cart Tilter  
Picture: 17LT20



Cart Tilter  
Picture: 17LT21



Bulk Lift Table  
Picture: 17LT22



Small Cart Lift  
Picture: 17LT23

# Racks



Engine Rack  
Picture: 17CM37



Dunnage Rack  
Picture: 17CM17



Collapsible Rack  
Picture: 17CM72



Horizontal Panel Rack  
Picture: 17CM06



Tube Rack  
Picture: 17CM73



Bag Rack w Swivel Casters  
Picture: 17CM36





800-529-0909

#cartdelivery #toppercarts

#forktruckfree



sales@topperindustrial.com



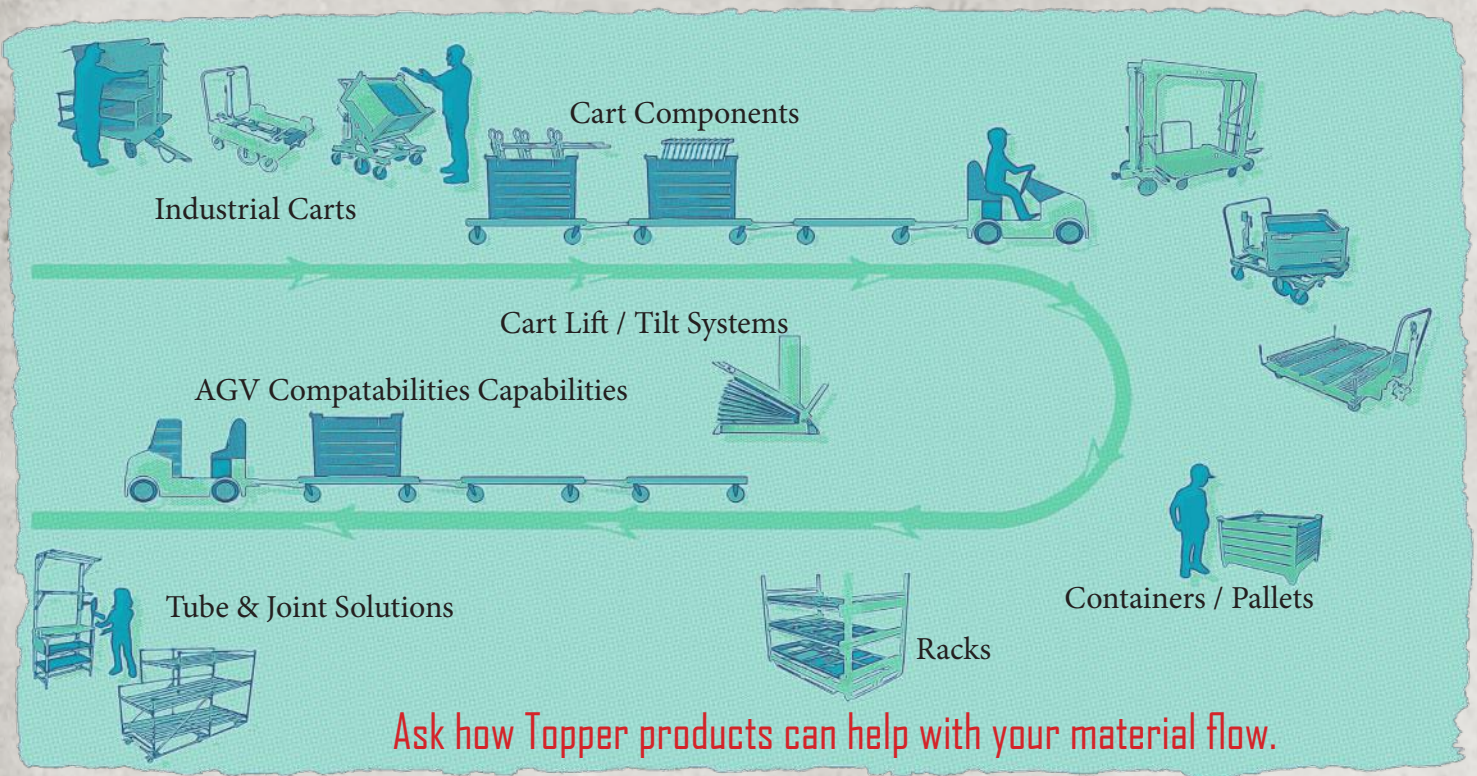
twitter.com/TopperInd



facebook.com/TopperIndustrial



youtube.com/IndustrialCarts



Topper Industrial is the BEST single source company that will **design and build** for all your material handling equipment needs.



Topper Industrial - Material Handling Solutions  
1729 NE Frontage Rd., Sturtevant, WI 53177

(P) 262-886-6931 (F) 262-886-9569  
sales@topperindustrial.com

www.topperindustrial.com / www.forktruckfree.com