



- Reduce Mistakes - Increase Output - Work Smarter

Handheld Mobile Computer BT Series

Logistics Operations Eliminating Shipment Errors

Even for products without barcodes



01 Reasons Why Barcodes Cannot Be Used

Barcode management is indispensable for preventing shipment errors. Some products you receive, however, **have no barcodes**.

CASE 1

The labels on the shipping boxes of received products do not carry barcodes but show product names only.

(It is difficult to ask every manufacturer to introduce a barcode system.)

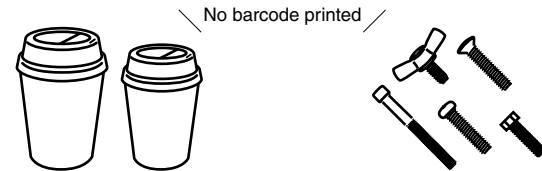


Product reception takes a lot of work.

CASE 2

No barcode is assigned to the product itself.

(It is difficult to affix barcodes due to product properties such as shape, material and cost.)



Products that basically have no barcode assigned such as paper cups

Products to which barcodes cannot be affixed due to their shapes, such as small hardware

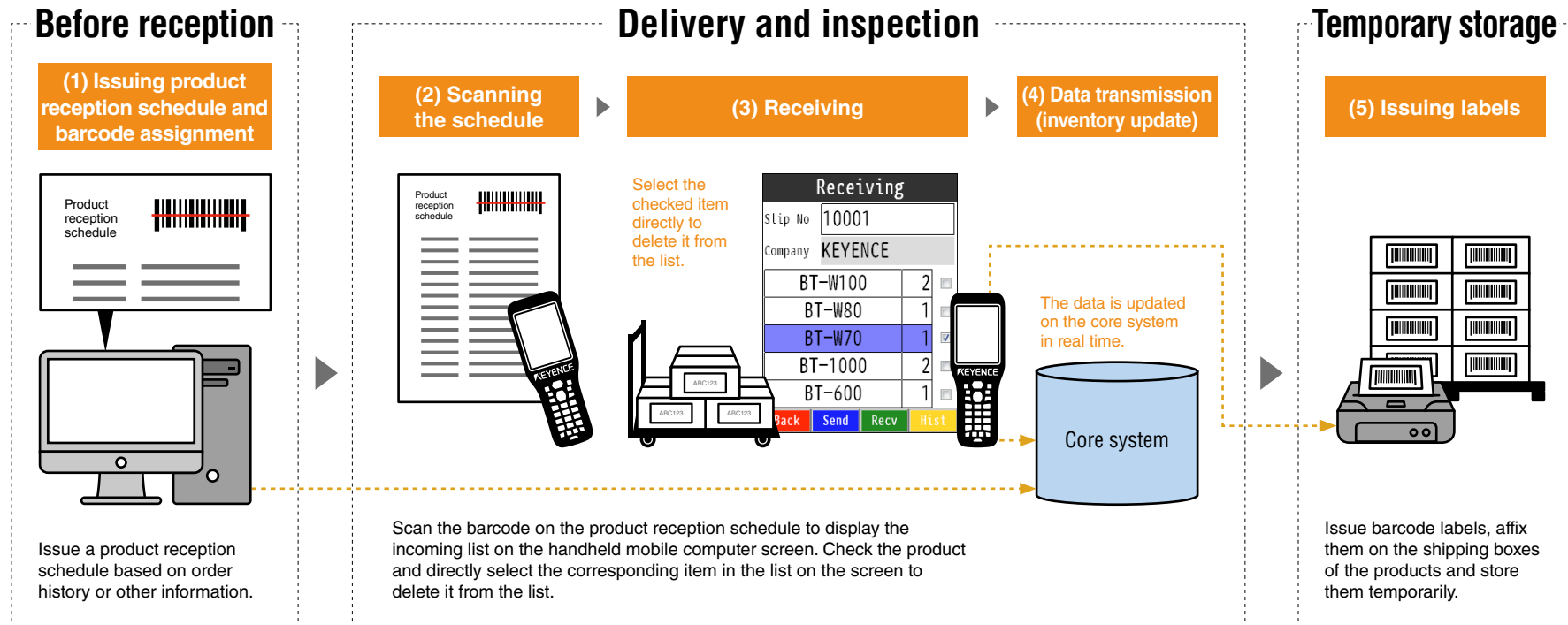
Picking takes a lot of work.

Visual checks or record writing by hand have limitations which may lead to risks of incorrect inventory or shipment errors.

02 Improving the Efficiency of Product Reception Work

When received products have no barcodes, use a product reception schedule to inspect the products by selecting items.

Product reception work flow when the handheld mobile computer is used

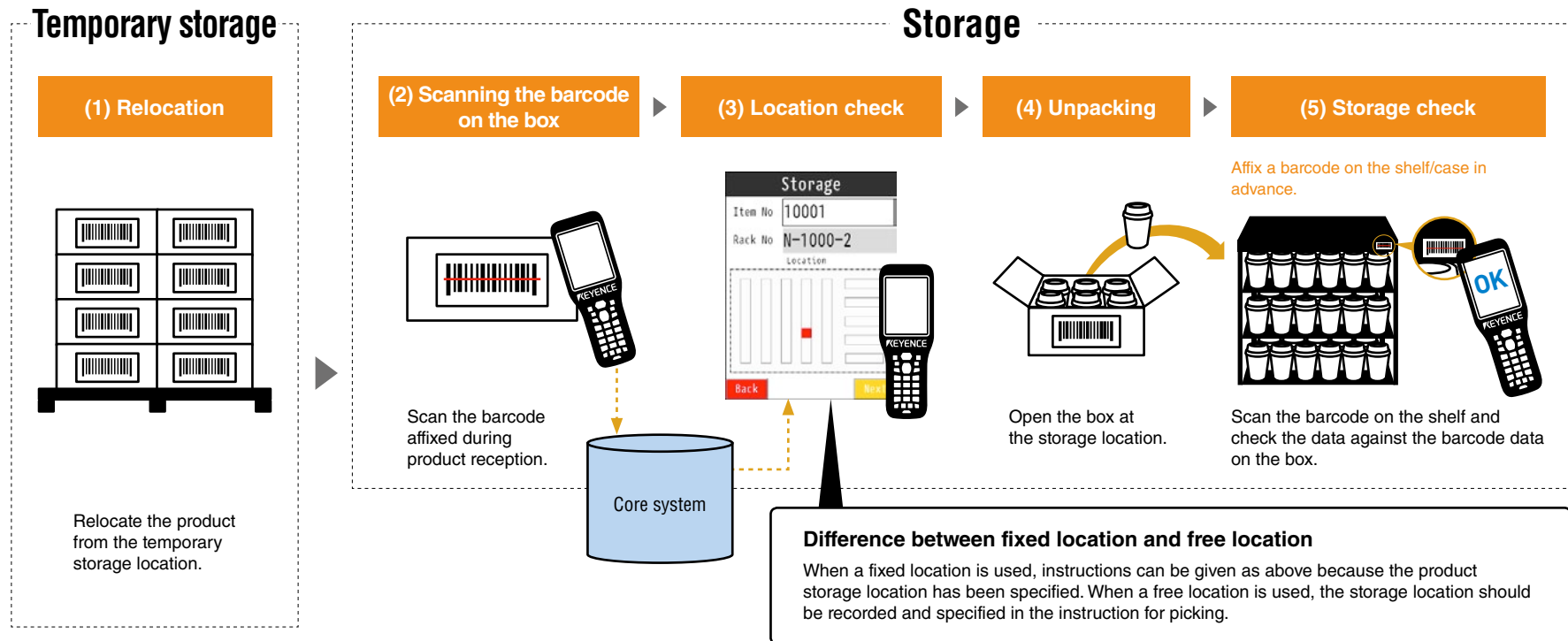


Link the handheld mobile computer and core system to allow incoming inspection, inventory updates and barcode label issuance to be conducted simultaneously to improve operation efficiency.

03 Improving the Efficiency of Storage Work

The barcode labels affixed at product reception can be used effectively during storage work. They ensure reliable storage and prevent errors from occurring in the next process (picking).

Storage work flow when the handheld mobile computer is used

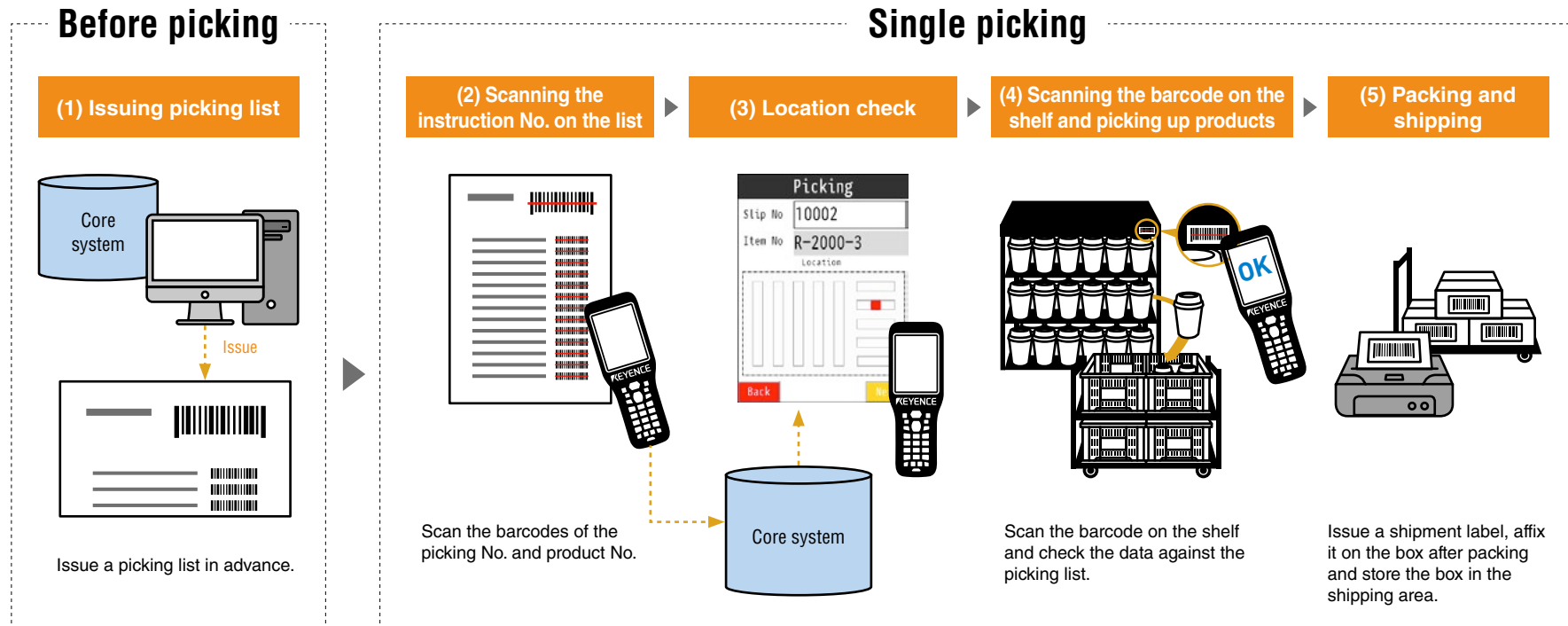


When the handheld mobile computer is used, guiding to the storage location and checking the storage can be done simultaneously. This ensures faster operation as well as reliable storage.

04 Improving the Efficiency of Picking Work (1)

Case of single picking

Products are picked up for each order.
You can start packing and inspection immediately after picking.

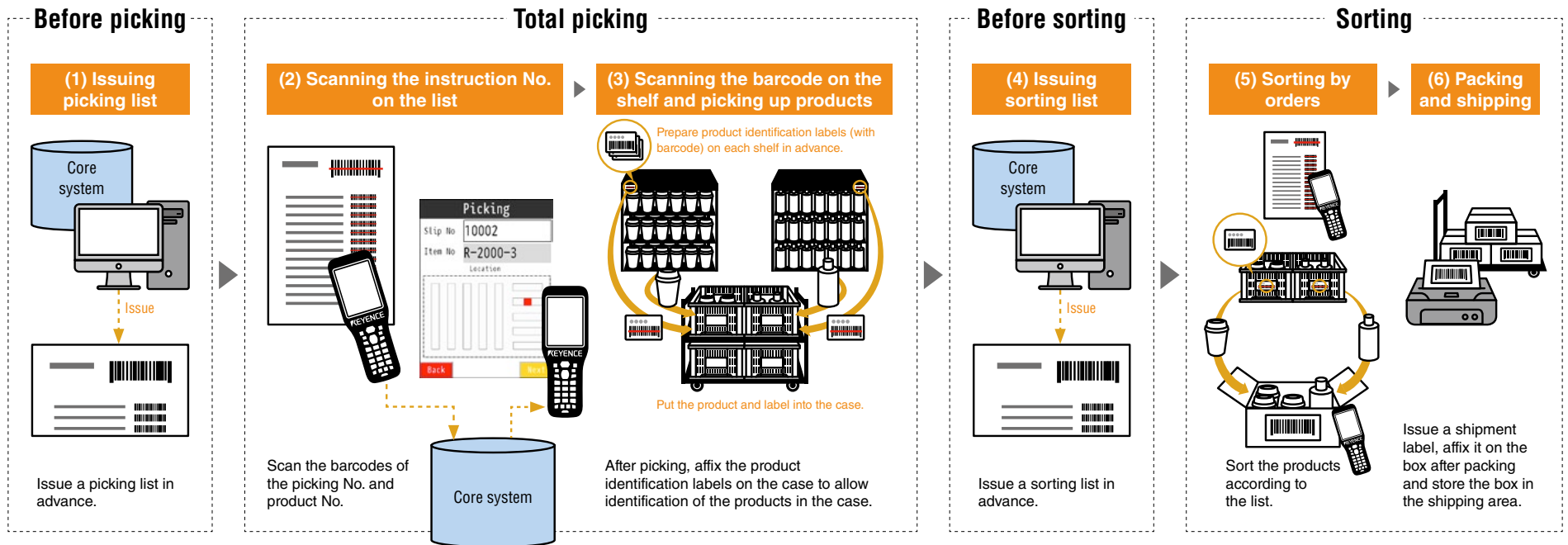


When the handheld mobile computer is used, the locations of the products are shown clearly so that picking can be done independent of the memory or experience of the worker. Checking the barcode on the shelf prevents picking errors.

05 Improving the Efficiency of Picking Work (2)

Case of total picking

The same products for multiple orders are picked up simultaneously.
Although the products should later be sorted according to the orders, the picking can be done efficiently.



In total picking, the handheld mobile computer can be used for sorting as well as product location confirmation and picking check. When you ship a limited variety of products to many destinations, total picking is more efficient than single picking.

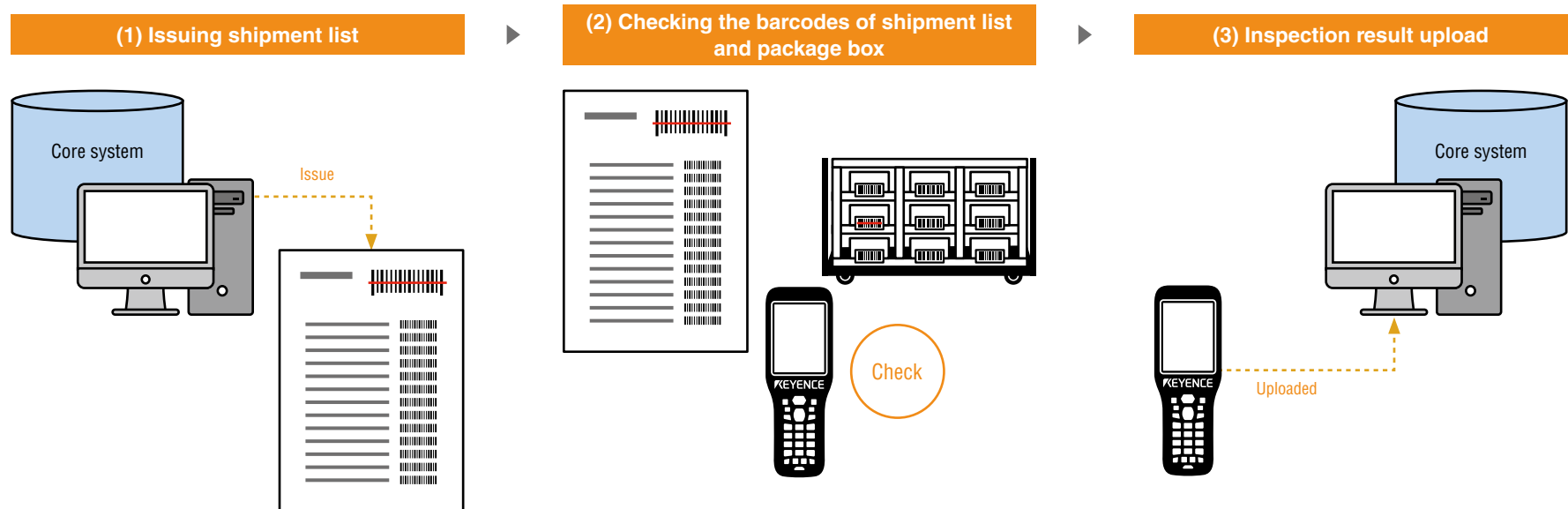
06 Improving the Efficiency of Outgoing Inspection Work

Check that correct products will be shipped.

After the shipment check, the product information and quantities are immediately updated in the inventory data.

Outgoing inspection work flow

Use the handheld mobile computer to check the products according to the shipment list.



Using the handheld mobile computer not only prevents shipment errors but also provides immediate feedback to the system. The inventory and shipment state can be checked quickly and accurately.

07 Improving the Efficiency of Inventory Work

Inventory is essential for maintaining and improving stock accuracy.

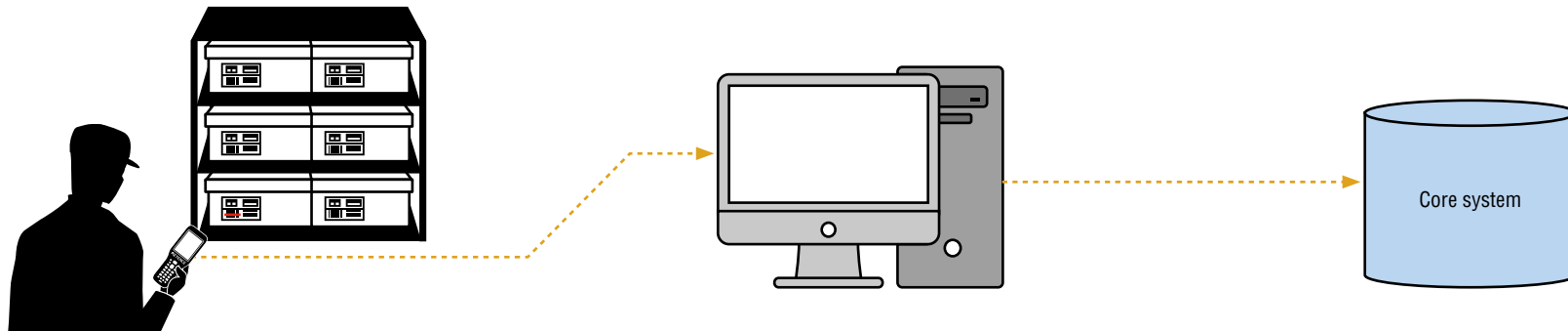
Inventory work flow

Using the handheld mobile computer can eliminate entry mistakes and PC input errors.
Data is transferred automatically so PC input work is unnecessary.

(1) Inventory check

(2) Data transfer without manual input

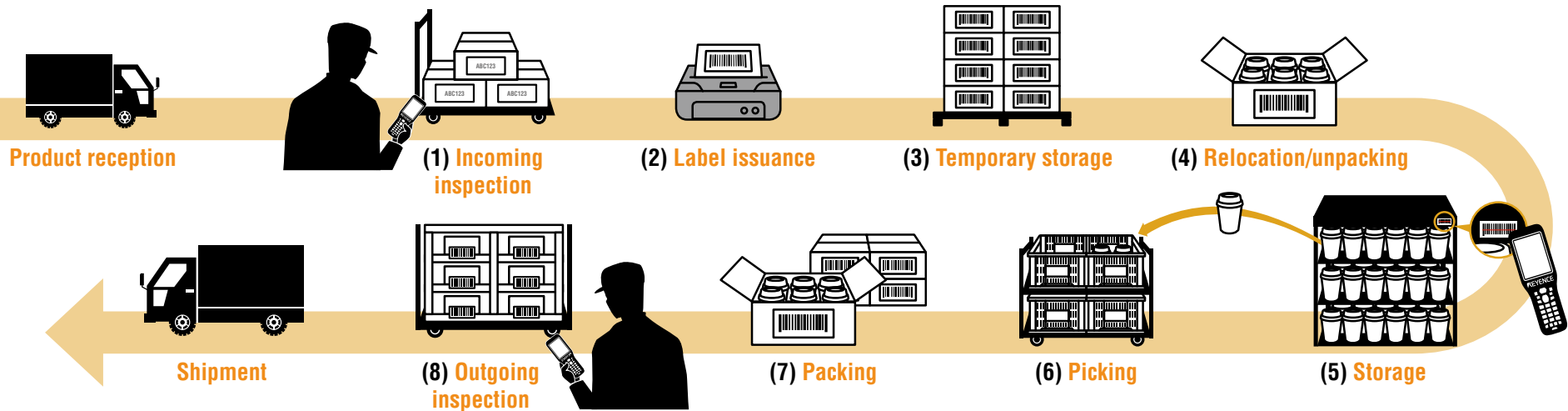
(3) Real-time data update



Using the handheld mobile computer can not only eliminate errors due to visual checks or manual entry but also can save time and labor cost. Total summation of the money amount of the stock or preparation of an inventory report can be done accurately.

08 Flow of Logistics Operations

The flow from product reception to shipment can be summarized as follows:



- (1) **Incoming inspection:** Check whether the ordered products have been received properly.
- (2) **Label issuance:** Issue barcode labels used for warehouse management and affix them on the shipping boxes of the products.
- (3) **Temporary storage:** Store the products on a rack or a nestainer.
- (4) **Relocation/unpacking:** In order to take out the products from the box, relocate the box from the rack to the unpacking area, and unpack the products.
- (5) **Storage:** Store the individual products on the shelf.
- (6) **Picking:** Collect necessary products from the shelves.
- (7) **Packing:** Arrange necessary products and pack them in a box or a folding container.
- (8) **Outgoing inspection:** Check the products in each box or container against the shipment list.

09 Efficiency Improvement for Products without Barcodes

Even when products have no barcode assigned, you can improve efficiency by using the handheld mobile computer as follows.

CASE 1

Before
See page 2

Since barcodes were not printed on the boxes of received products, reception work/reception result management were done in handwriting.



After
See page 3

Solve the problem using the functions of the handheld mobile computer



Product name	Product code	Quantity
○○○	12340	
△△△	12350	
□□□	12360	

By displaying the product reception schedule on the screen of the handheld mobile computer and checking the product directly on the screen, you can conduct incoming inspection, inventory update and barcode label issuance simultaneously.

CASE 2

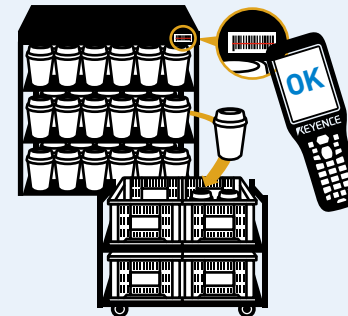
Before
See page 2

It was difficult to affix barcodes due to product properties. Picking took too much time and errors occurred frequently.



After
See pages 5 and 6

Solve the problem using the functions of the handheld mobile computer



Affix the barcode on the shelf and check it with the handheld mobile computer. Picking and packing can be done quickly without problem.

10 Advantages of Introducing the Handheld Mobile Computer

Improved work efficiency and accuracy

- Losses due to manual work can be eliminated.
- Barcode reading makes work faster.
- Human errors can be eliminated (Barcode reading prevents errors caused by visual check or verbal messages).
- Shipment errors can be nearly eliminated.

Improved stock accuracy

- Real-time link processing prevents system data update delays.
- Decrease of stock accuracy due to input errors can be prevented.
- Maintaining appropriate inventory is effective for saving management expenses and purchase costs.
- Customer care ability and customer satisfaction can be improved.

Shipment history management

- The time, operator, lot, quantity and destination of each shipment can be managed.

KEYENCE's Handheld Mobile Computer Lineup

KEYENCE's barcode solution, the BT-W Series Handheld Mobile Computer, helps optimization and efficiency improvement of your operation.

BT-W100 Series



Information terminal with 3.5-inch screen

Total length	170 mm 6.69"
Weight	259 g
Screen size	3.5-inch



BT-W80 Series



Durable model with a drop impact resistance of 3.0 m **10.0'**

Total length	173 mm 6.81"
Weight	223 g
Screen size	2.7-inch



BT-W70 Series



Ultralight model with a main unit of 130 g

Total length	156 mm 6.14"
Weight	130 g
Screen size	2.4-inch



Rich collection of developer support services ensures easy and secure in-house development!

See details at: www.keyence.com/btus

Materials / Tools

Download Manuals, Drivers, and sample programs

Version Updates

Get the latest device firmware and PC software

Contact Us

Ask our expert engineers about your technical questions



CALL TOLL FREE TO CONTACT YOUR LOCAL OFFICE
1-888-KEYENCE
1 - 8 8 8 - 5 3 9 - 3 6 2 3

www.keyence.com

SAFETY INFORMATION
Please read the instruction manual carefully in order to safely operate any KEYENCE product.

CONTACT YOUR NEAREST OFFICE FOR RELEASE STATUS

KEYENCE CORPORATION OF AMERICA

500 Park Boulevard, Suite 200, Itasca, IL 60143, U.S.A. **PHONE:** +1-201-930-0100 **FAX:** +1-855-539-0123

KEYENCE CANADA INC.

E-mail: keyencecanada@keyence.com

KEYENCE MEXICO S.A. DE C.V.

E-mail: keyencemexico@keyence.com

The information in this publication is based on KEYENCE's internal research/evaluation at the time of release and is subject to change without notice. Company and product names mentioned in this catalog are either trademarks or registered trademarks of their respective companies. The specifications are expressed in metric units. The English units have been converted from the original metric units.
Copyright (c) 2017 KEYENCE CORPORATION. All rights reserved.

KA12-1017

BTlogistics-KA-TG-US 1107-1