

# PickPal



Tompkins Robotics PickPal  
Pick Assist (PA)  
Autonomous Mobile Robot (AMR)

# Tompkins Robotics PickPal Line of PA AMR Solutions

## Transform the Distribution and Fulfillment Process with PickPal

- ▶ Increase Worker Productivity 2 to 3 times by Carrying More Items
- ▶ Improve Picking Efficiency and Reduce Picking Errors.
  - Shorten Employees Walking Distance, typically >50% of picking labor
  - Optimize order grouping for efficient pick path routing
- ▶ Reduce Turnover and Training Costs
- ▶ Solve the Inefficiencies that Result from SKU Proliferation
- ▶ Improved Management with Real Time Views and Controls of Warehouse and Robot Activities
- ▶ Seamlessly Connect with Many Different WMS Systems to Quickly Implement Order Demand Solution
- ▶ Streamline Multi-Channel and Multi-Client Operations



### Benefits to PickPal Solution:

- ▶ Quickly Deployed
- ▶ Flexible RaaS Offering
- ▶ Add Seasonal Robots as Needed
- ▶ Worker Training is Minimal
- ▶ Saves Labor, OPEX Costs
- ▶ Contributes to a Safer Work Environment

# PickPal

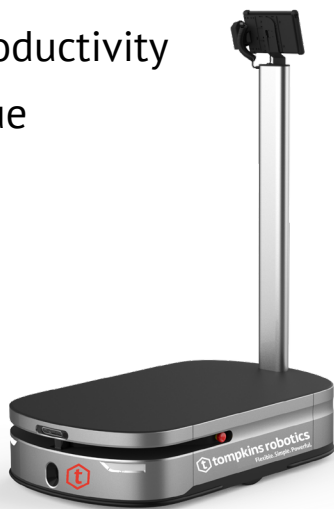
# PickPal<sup>+</sup>

# Flexibility to Match Customer's Needs

Tompkins Robotics continues to bring innovative technology, financing options, and rapid deployment to generate faster ROI

## Technology To Increase Productivity

- ▶ Eliminate Time-Consuming Manual Order Picking
- ▶ Increase Orders Picked Lowering Cycle Times and Increasing Throughput
- ▶ Reduce Picking Errors and Walk Time
- ▶ Develop Safer, More Ergonomic Work Environment
- ▶ Increase Fulfillment Productivity
- ▶ Decrease Worker Fatigue



## Financing Options

- ▶ Capital Purchase (CAPEX)
- ▶ Robots-as-a-Service (RaaS) (OPEX)
- ▶ Low Investment With Minimized Risk Exposure
- ▶ Optimize Labor Cost with Monthly Payments Based on Demand



## Rapid Deployment

- ▶ Keep Existing Warehouse Structure
- ▶ Scale Up or Down as Needs of Business Change
- ▶ Minimal Training Required for Workforce
- ▶ As few as 3 Months from Agreement to 1<sup>st</sup> Pick Messaging

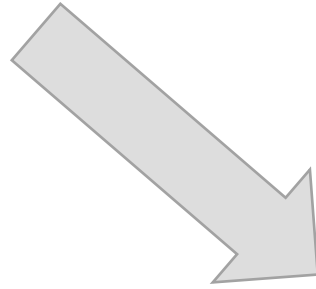


# Solution to Increases in SKUs and Individual Items (Eaches)

## Your Solution to an Increase in SKUs and Individual Items (Eaches)

### ► Shifts in Consumer Demands:

- More Eaches and Fewer Items per Order
- Wider Selection, Proliferating SKU counts
- Faster Delivery Times
- Later Customer Order Entry Times



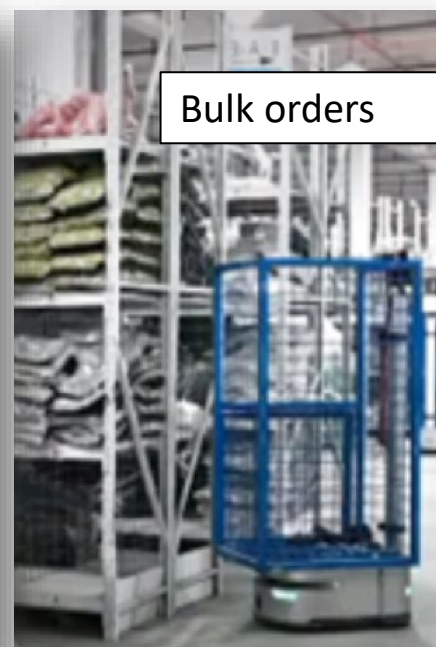
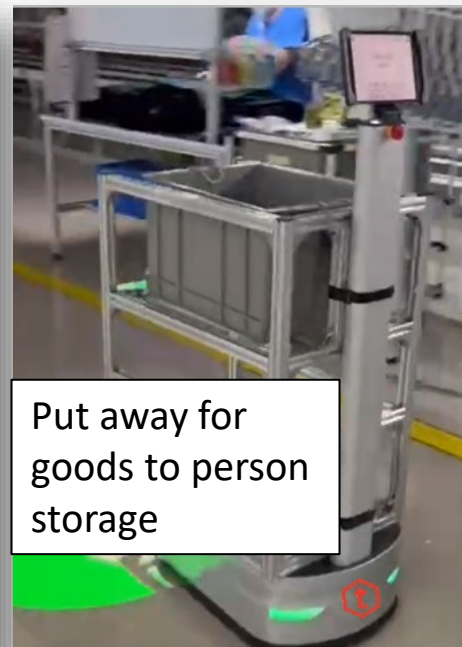
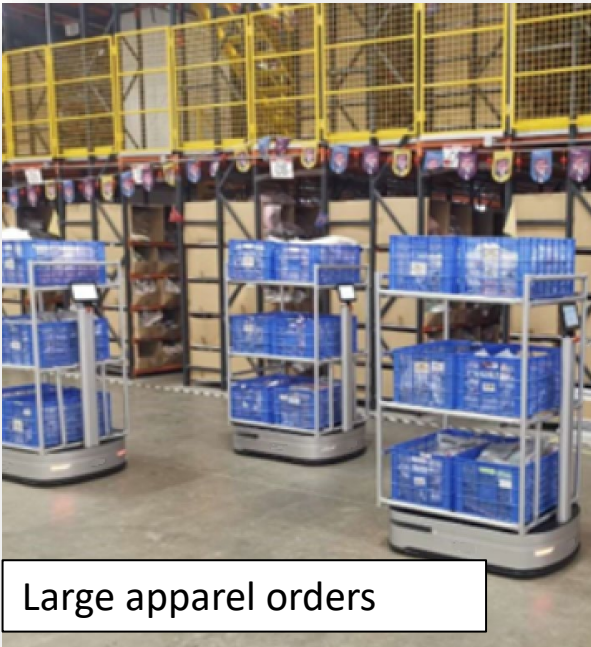
### ► How PA AMR Solves Alleviates the Problem:

- Ability to Carry More Items and More Orders
- Optimize Routes to Order Demand Quickly
- Workers Increase Throughput Capacity with More Accurate and Faster Picking





# Customized to Your Application



Pick up to 84 orders simultaneously

Multiple bin and tote sizes

Put away for goods to person storage

Bulk orders

Large apparel orders



Garments on hangers

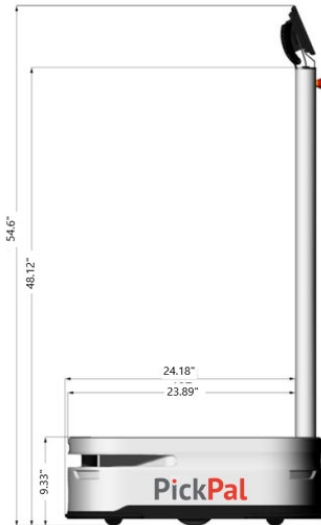
Store replenishment

Medical supplies



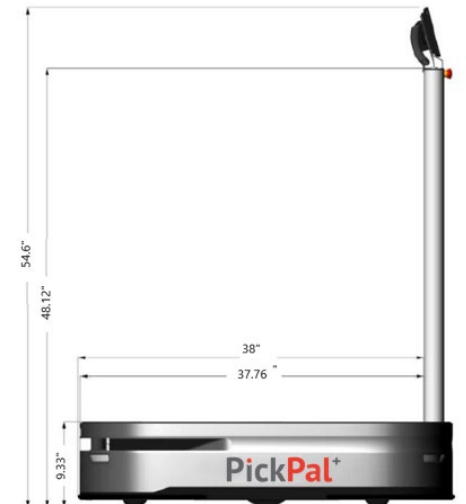
## PickPal

<b>Size</b>	27 in. x 18 in. x 55 in.
	692*462*1387mm
<b>Rotation diameter</b>	27.55 inches
	700mm
<b>Maximum payload</b>	220 lbs.
	100 kg
<b>Self-weight (including battery)</b>	132 lbs.
	60 kg.
<b>Navigation path</b>	SLAM+VSLAM
<b>Maximum straight speed</b>	3.1 miles per hour
	4.6 ft/s or 1.4 m/s
<b>Stop position accuracy</b>	Error <1cm



## PickPal+

<b>Size</b>	41 in. x 28 in. x 55 in.
	1052*712*1387mm
<b>Rotation diameter</b>	41.42 inches
	1052mm
<b>Maximum payload</b>	440 lbs. / 882 lb. option
	200 kg / 400 kg option
<b>Self-weight (including battery)</b>	198 lbs.
	90 kg.
<b>Navigation path</b>	SLAM+VSLAM
<b>Maximum straight speed</b>	3.1 miles per hour
	4.6 ft/s or 1.4 m/s
<b>Stop position accuracy</b>	Error <1cm





## Get in Touch!

### **Tompkins Robotics**

6435 Hazeltine National Drive  
Suite 105  
Orlando, FL 32822  
+1 407 362 0700

Mitch Dorsett  
Director of Business Development  
& Marketing  
[mdorsett@tompkinsrobotics.com](mailto:mdorsett@tompkinsrobotics.com)