



Poweramp manufactures a complete line of loading dock equipment including hydraulic, air-powered and mechanical levelers, portable steel yard ramps, safety vehicle restraints, seals, shelters and accessories. You can completely outfit your entire loading dock area with Poweramp's comprehensive line of loading dock equipment.

# LOADING DOCK LEVELERS

## HYDRAULIC DOCK LEVELERS

Hydraulic dock levelers are push-button activated and have the highest capacity available. They utilize fully powered raise and lip extension functions with hydraulic cylinders and individual or multi-unit hydraulic pump and motor stations. They're also the safest loading dock choice, as these levelers contain in-line velocity fuses to prevent free fall in a truck pull-out situation.

### AVAILABLE MODELS

- PR Series
- VH Series
- EH Series
- LHP Series

## AIR-POWERED DOCK LEVELERS

Air-powered dock levelers are an economical alternative to hydraulic levelers, but are still operated with a push-button activation for ease of use. They have a mid-range capacity with an air bag or bellows system used to raise and lower the deck. The CentraAir® uses compressed air and doesn't require any electricity in the dock pit.

### AVAILABLE MODELS

- CentraAir Series
- AP Series

## MECHANICAL DOCK LEVELERS

Poweramp mechanical dock levelers are an economical solution for basic applications, while still providing strength and durability. These levelers use a pull chain activation to raise the deck. The operator then simply walks the deck back down to the bed of a trailer or to a stored position. Poweramp mechanical levelers are equipped with a Lip Drive positive lip extension and an extended range, hold down mechanism for extreme float conditions.

### AVAILABLE MODELS

- HM Series
- CM Series
- LMP Series

## EDGE-OF-DOCK LEVELERS

Edge-of-dock levelers are a great solution for select applications. They mount directly to the dock face and provide a recommended working range of +/-3" and a maximum operating range of +/-5" above or below dock. The units are offered with either mechanical or hydraulic operation.

### AVAILABLE MODELS

- DL Series
- NL Series
- TS Series
- HNL Series
- HED Series

## VERTICAL STORING DOCK LEVELERS

Vertical storing dock levelers are hydraulically operated and offer unmatched environmental control for customers with food storage or temperature sensitive applications. By storing in the vertical position, the VS Series allows the overhead door to form a perfect seal to the pit floor. VS Series levelers also offer improved cleanliness, overhead door protection, increased security, improved productivity, and easy maintenance.

# VEHICLE RESTRAINTS

## POWERHOOK® SERIES

The PowerHook is a non-impact, self-aligning, hydraulic restraint that is stored in the dock pit and is the most effective truck restraining device available on the market.

### SAFETY FEATURES

- Stored in the dock pit and out of the way, allowing lift gate trailers to backup tightly against the dock.
- Actively seeks and secures a trailer's Rear Impact Guard (RIG).
- Maintains a positive hydraulic hold of the RIG for zero running room.
- Exterior strobe light if the truck attempts to pull away while secured.
- LED 3-light system for advanced communication between the truck driver and dock attendant.

## TPR UNILOCK® SERIES

An upgrade from the standard TPR, the UniLock provides an advanced cam design that rotates the hook away from the trailer's Rear Impact Guard (RIG) to release "RIG Wedge" pressure.

### SAFETY FEATURES

- Locking mechanism to prevent the restraint from disengaging the trailer's RIG when pressure is applied.
- Universally effective on any obstructed RIG, including intermodal trailers with a cover plate.
- LED 3-light system for advanced communication between the truck driver and dock attendant.

## TPR® SERIES

The TPR is a push-button operated, trailer-positioned vehicle restraint that is mounted to the face of the dock and utilizes a rotating hook to secure the trailer's Rear Impact Guard (RIG).

### SAFETY FEATURES

- Unit automatically positions itself when lowered by the trailer's RIG.
- Motor and gears keep hook continuously engaged with the trailer's RIG.
- LED 3-light system for advanced communication between the truck driver and dock attendant.

## POWERSTOP® SERIES - AUTOMATIC & MANUAL

The PowerStop is a non-impact vehicle restraint that is mounted to the drive or dock face. It's available as either an automatic hydraulic activation or manual operation.

### SAFETY FEATURES

- Low profile, non-impact design
- Hydraulic or manual operation to vertically raise the restraint and engage the Rear Impact Guard.
- RIG sensor bar on the Auto and MAL to notify the operator if the restraint is not engaged with the trailer's Rear Impact Guard.
- LED light communication available with the Auto, MML and MAL.

## SAFETY BARRIERS

**Poweramp's Barrier Lip** extends 5" to 7" above the cross traffic position and prevents forklift trucks from driving over the dock edge. The Barrier Lip is usable anytime the leveler is in the cross traffic position and offers a smooth transition between the platform and lip.

**Poweramp's Bar-Lift Barrier** prevents forklift trucks from driving over the dock edge, as well as protects the overhead door from damage. Its hydraulic operation provides years of trouble-free service for use with both mechanical and hydraulic dock levelers. The Bar-Lift Barrier can also be installed on docks without levelers.

# ACCESSORIES



**iDock**  
CONTROLS

ADVANCED INTERACTIVE CONTROL  
OF YOUR LOADING DOCK EQUIPMENT

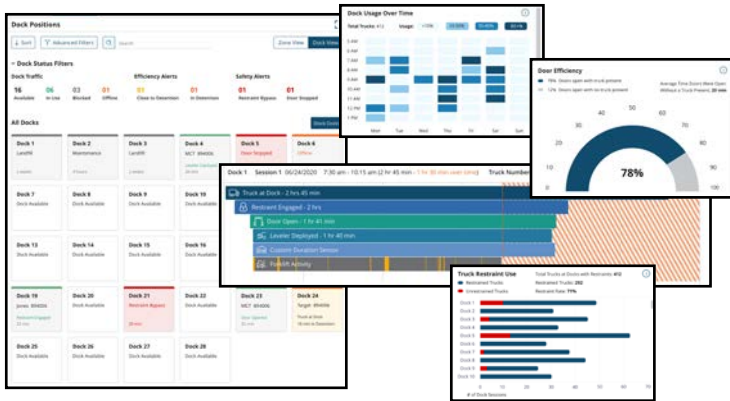
**INTERACTIVE MESSAGE DISPLAY** Includes equipment information, system information, maintenance history and your loading dock equipment statistics, such as cycle counts, optional forklift activity, faults, and more.

**INTEGRATED CONTROLS** iDock Controls can integrate your installed Systems dock levelers, vehicle restraints, and other dock accessories, as well as door operators. Interlocking equipment controls provides a sequence of operation for your dock equipment, improving safety and energy efficiency.

**ADVANCED 3-COLOR LIGHT COMMUNICATION** Compared to other standard green and red systems, iDock Controls utilize an additional third amber light if a fault is detected or restraint is in bypass mode.

myQ<sup>®</sup> DOCK  
MANAGEMENT

ANALYZE YOUR LOADING  
DOCK ACTIVITY ONLINE



Login to your online account at [myQ.com](http://myQ.com) to review and analyze visual reports generated from your iDock controls and sensors. Enhance your loading efficiency and improve turn times.

**ONLINE REPORTS INCLUDE:**

- **REAL-TIME ACTIVITY** Check the current status of each dock and time stamps of live truck-at-dock sessions.
- **LOADING DOCK ANALYTICS** Compare the efficiency and activity of any docks during a selected period of time.

[LoadingDockSystems.com/iDock](http://LoadingDockSystems.com/iDock)

## DOCK SEALS AND SHELTERS

Poweramp offers a complete line of Fairborn Premium brand dock seals and shelters that are custom designed to fit your building opening and the trucks you will be servicing. Dock seals and shelters save energy dollars while providing bug and rodent protection at the loading dock area during material handling operations.

**AVAILABLE SEALS**

- 1000 Series Seal with Fixed Head Pad
- 1200 Series Seal with Adjustable Head Pad
- 1400 Series Seal with Head Curtain

**AVAILABLE SHELTERS**

- 1600 Series WeatherGuard
- 2000 Series Rigid Style Shelter
- 2200 Series Soft Sided Shelter
- 2500 Series Flexible Shelter



**NOTICE**  
ALL DRIVERS  
MUST CHECK IN  
BEFORE LOADING  
OR UNLOADING

**DOCK  
10**



## ACCESSORIES

The Allied Solutions division of Poweramp provides all of the additional items required at your loading dock.

Dock accessories from Allied Solutions can help you improve your loading dock's efficiency and productivity with its comprehensive line of aftermarket products. These products will protect your employees from dock-related accidents and enhance your loading dock communication and safety. Our products are designed to reduce damage and increase productivity at the loading dock.

