

# SOLUTIONS FOR THE RETAIL INDUSTRY

## EFFICIENT, RELIABLE AND INDIVIDUAL



**TENTE**

BETTER MOBILITY. BETTER LIFE.



# KEEPING YOUR BUSINESS MOVING

Productivity, safety and reliability. These three aspects are among the key attributes when it comes to mobility solutions for retailers. We therefore offer you a wide range of products in this area that will increase the efficiency of your day-to-day business, improve safety, and give you a clear competitive advantage. Whether for DIY stores, the hardware trade, or mail order businesses, we have the right castors and wheels for you and are by your side with intelligent service solutions.

## SERVICES FOR PURCHASING AND SALES

Our modular product world reliably covers the most diverse requirements. We will be happy to help you put together an efficient, high-turnover component and product portfolio. Our well-established standard products for the specialist trade are generally in stock at all times and available at short notice. As a supplier, we leave no wish unfilled. This is supported by the fact that we regularly come out on top in supplier rankings of leading brand manufacturers. We offer you a wide range of services for merchandise management and sales promotion, enabling you to fully exploit your potential.

## POINT-OF-SALE SERVICES

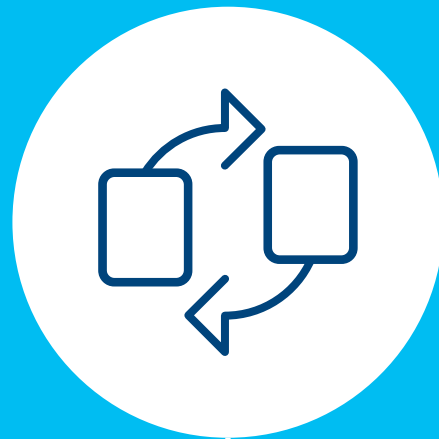
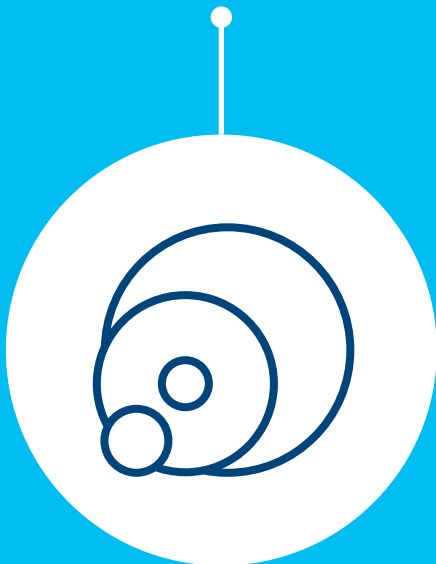
We are the right people to turn to when it comes to point-of-sale services. Ranging from cost-effective pre-labelling with barcode stickers and specialist advice on product ranges, right up to individual product presentations in your company.

On the following pages you will find detailed information about our service solutions for your area. Please feel free to contact us for a personal consultation.

# SOLUTIONS FOR PURCHASING AND LOGISTICS

## PRODUCT RANGE – DIVERSITY WITH A SYSTEM

Are you looking for a manufacturer who can reliably handle the most diverse requirements? Our wide-ranging, modular product line is the answer. From design-oriented mobility solutions to extreme load transport and drive systems – we have the expertise to put together your component and product portfolio as efficiently as possible. We offer you all these advantages from a single source: this allows you to standardise your processes, streamline your warehousing and simplify your production.



## ELECTRONIC DATA INTERCHANGE – EFFICIENCY THAT CONNECTS

Lean processes are an important element of entrepreneurial success – both within the company and in dealing with customers. Within the scope of our cooperation, we can offer you a secure, reliable and fast exchange of information, data and documents. In addition to common EDI formats and standards, we are able to individually adapt to your infrastructure, independent of systems and formats. Thanks to intelligent networking, all steps along the entire supply chain can be simplified and streamlined – from ordering and the various confirmation processes to warehousing and logistics. The result: improved processing and significant savings in terms of resources, time and costs. Which solution will you be implementing?

**PRODUCTION CAPACITY – FULLY SCALABLE**

Large-scale, small-scale or customised construction – TENTE has warehouses and production facilities on five continents. We have a high level of production/assembly and automation, enabling us to react quickly, flexibly and reliably to your individual needs and capacity requirements worldwide.

There are good reasons why we have successfully demonstrated our potential as a supplier to original equipment manufacturers for years and gained the trust of numerous global players from a wide range of industries.



**TRADE SUPPORT – QUALITY ON DEMAND**

Our well-established standard products for the specialist trade are generally in stock at all times and available at short notice. This gives you access to the goods you need whenever you need them. Our competent sales team has extensive knowledge of the market and is available to help you put together a top-selling range of products.

**SUPPLIER RANKINGS – MORE THAN JUST SATISFIED**

In our company, everything revolves around improving – products, processes and services. The fact that we succeed in doing so is demonstrated by our excellent ratings, and we regularly come out on top in supplier rankings of leading brand manufacturers and small and medium-sized companies.

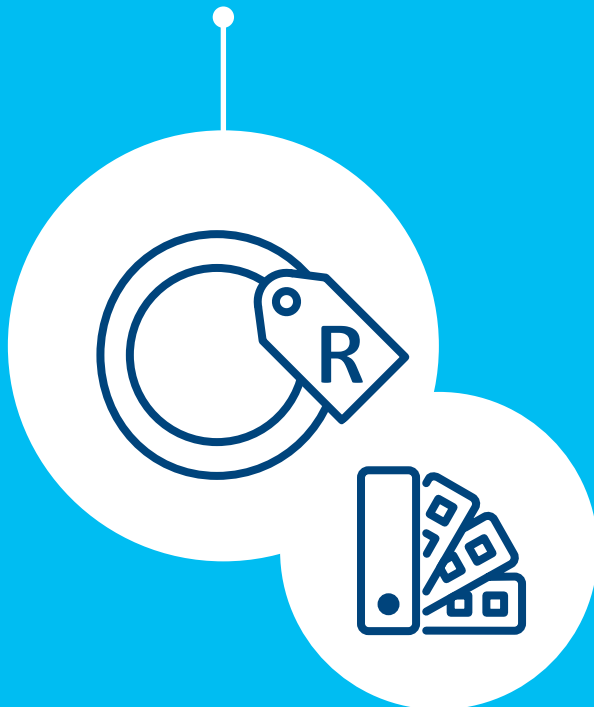
With our intelligent mobility solutions, we have established ourselves as a valued supplier and committed partner across all industries. This provides a good basis – and we would be pleased to serve you as a partner, too.



# SOLUTIONS FOR MARKETING AND SALES

## PRODUCT BRANDING – CONVEYING BRANDS

Use our products as attractive ambassadors of your brand. With a range of diverse manufacturing processes, we offer you a broad spectrum of options to effectively implement your corporate design. Whether it's a name, logo or corporate colour, our know-how can help you design your mobility solution on an individual basis. Reach out to us and we will be happy to advise you.



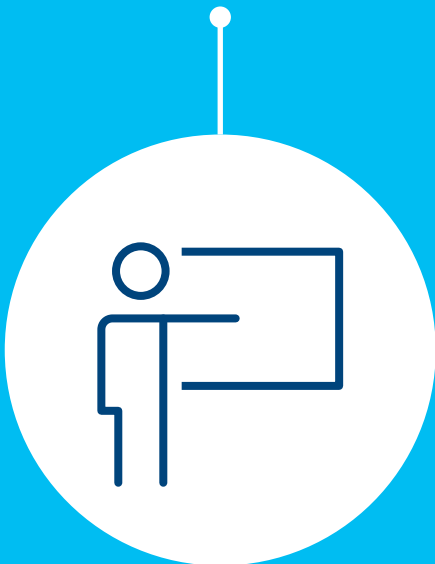
## CO-BRANDING – SHARED SUCCESS

The TENTE brand is recognised worldwide for excellent mobility solutions of the highest quality. Many well-known manufacturers trust in our capability. For many of them, this is a strategic brand partnership that will last for decades.

Take advantage of our highly-acclaimed brand for your products and product marketing. After all, premium components are not only a key sign of quality and distinction, but they also offer you a positive and sustainable brand image transfer.

## **TRAINING – DEVELOPING COMPETENCE**

Train your staff to be mobility specialists. The proper selection, assembly and use of castors and wheels, as well as complete systems, is a multifaceted and complex subject area where numerous influencing factors must be taken into account. For this reason, we offer training and instruction courses for planners and users, which are tailored to various areas of the company. We are happy to offer these services on your premises or centrally in our modern information and training centre. Our TENTE Campus brings innovative solutions to life and provides inspiration for better mobility.



## **POINT-OF-SALE MARKETING – PERFECT CONSUMER APPROACH**

We will support you with a strong presence at the point of sale. From cost-effective pre-labelling with barcode stickers and specialist advice on product ranges and range optimisation, right up to customer-focused information media and individual product presentations based on the visual style of your company.

Take advantage of our wide range of services for product management and sales promotion to fully exhaust the potential available to you.

# DIVERSITY WITH A SYSTEM

## OUR CASTORS

All of our products have their own specific qualities and strengths. Whether it's high design standards, specialist applications or exceptional load capacities – our range can meet your needs and be adapted to fit different models.

From the correct dimensions and technical specifications to the required configuration, our product families are able to offer the ideal solution – whatever you need. Contact us for more information or visit our website: [www.tente.com](http://www.tente.com)

E-Drive



⌀ 125 mm

Alpha



⊃ 70 - 500 kg  
⌀ 80 - 200 mm

Delta



⊃ 300 - 600 kg  
⌀ 125 - 200 mm

Delta twin



⊃ 600 - 750 kg  
⌀ 125 - 200 mm

Zeta



⊃ 300 - 800 kg  
⌀ 125 - 250 mm

Kappa



⊃ 300 - 2.000 kg  
⌀ 80 - 300 mm

Kappa flex



⊃ 360 - 750 kg  
⌀ 160 - 200 mm

Omikron



⊃ 900 - 11.000 kg  
⌀ 100 - 500 mm



Radiata



1.200 - 1.500 kg  
80 mm

Scout



150 - 350 kg  
160 - 200 mm

Integral



100 - 150 kg  
100 - 200 mm

Integral twin



125 - 250 kg  
100 - 150 mm

Linea clinic



150 - 200 kg  
125 - 150 mm

Aviana care



100 kg  
75 mm

Aviana



75 mm

Agila



40 - 100 kg  
50 - 150 mm

Agila twin



50 - 100 kg  
50 - 75 mm

Stora



60 - 160 kg  
75 - 160 mm

Mono



30 - 70 kg  
50 - 100 mm

Galea



60 - 100 kg  
100 - 125 mm

Levina



60 - 100 kg  
75 - 150 mm

Linea



40 - 150 kg  
50 - 150 mm

Anika



40 - 50 kg  
55 - 75 mm

Lumina



30 - 100 kg  
35 - 75 mm

Stylea



40 - 100 kg  
35 - 100 mm

Smiles



40 kg  
50 mm

Compacta



10 - 55 kg  
14 - 50 mm

# EXPERTISE THAT INSPIRES

## CONTACT US

We are a globally operating company supporting you on five continents. This means on-site support with service on a level playing field – along with in-depth knowledge. Additionally, our solution experts will advise you on the best mobility concept for your needs. Go here to find your nearest TENTE location: [www.tente.com/locations](http://www.tente.com/locations)

## INCREASE YOUR EFFICIENCY

Our intelligent mobility solutions help you save time, effort, energy, and operating expenses. This allows you to improve your operating methods and working conditions, thereby optimising your processes and ensuring higher productivity, profitability and safety. Ask for our solutions catalogue or read about how our customers benefit from our tailor-made solutions on our website: [www.tente.com/solutions](http://www.tente.com/solutions)

## SAVE DEVELOPMENT TIME

On our website you will find technical drawings, product data sheets and 2D and 3D CAD files in various formats: [www.tente.com/products](http://www.tente.com/products)

## GET MORE INFORMATION

In addition to our informative website, you can easily download various catalogues and brochures on mobility solutions, customer references, and much more: [www.tente.com/download](http://www.tente.com/download)





[www.tente.com](http://www.tente.com)



PRODUCTIVITY



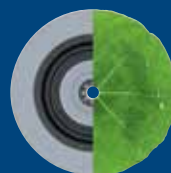
SAFETY



DESIGN



DURABILITY



ENVIRONMENT