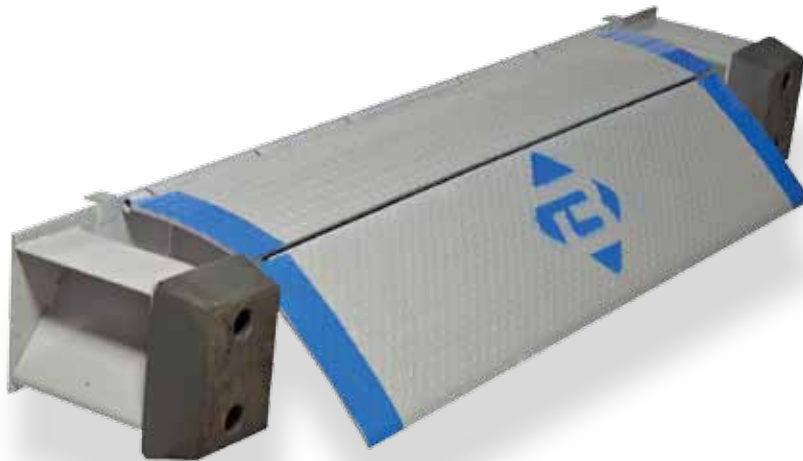




## **Dock Levelers** Model EP

### *FAST AND EASY OPERATION*

Fast and easy to operate, Bluff's Edge of Dock Leveler is positioned by lifting a self-storing handle and pulling the handle to the dock floor. The latch assembly activates the lip, moving it forward to the floor of the trailer as the handle is lifted. When released, the handle automatically returns to a stored position. The optimum dock height for conventional trailers is 51", while the proper dock height for refrigerated equipment is 55".



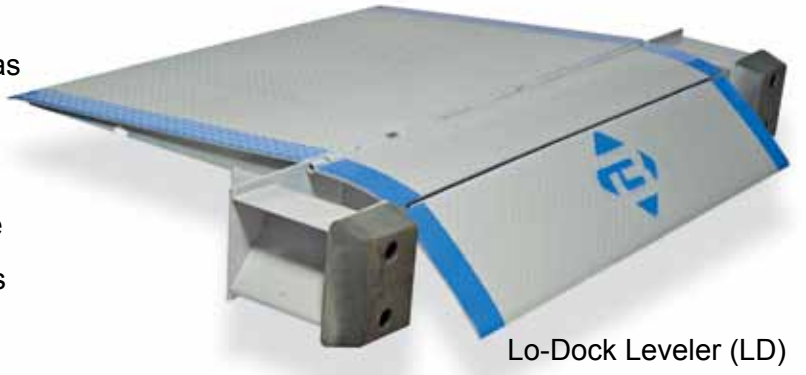
### **EZ-PULL EDGE OF DOCK LEVELER (EP)**

- Capacities from 20,000 to 30,000 pounds
- Widths of 66", 72" and 78"
- Automatically returns to stored position when truck leaves
- Self-storing handle
- Refrigerated lip optional
- Bumper and bumper blocks are included
- Steel faced bumpers available
- Hydraulic option can be retrofitted on existing units, or is available as an add-on option



## Lo-Dock Levelers Model LD

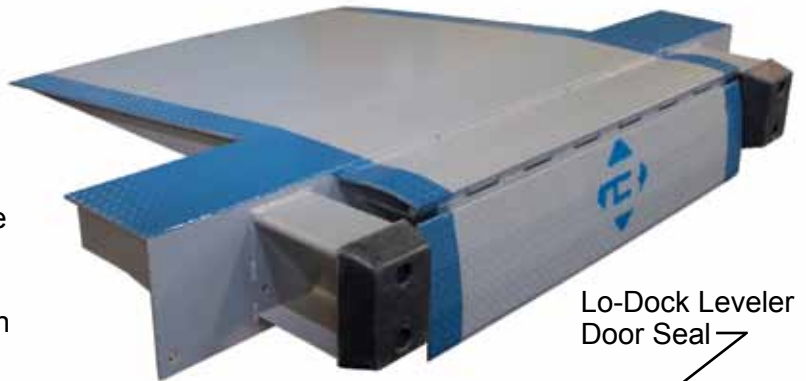
Raise the height of your present dock as much as 11" without expensive dock alterations. Lo-Dock Levelers can easily be installed on any concrete dock without welding or modifications. Complete technical information and installation instructions are available upon request.



Lo-Dock Leveler (LD)

Bluff's Edge of Dock Leveler is designed to have a working range of 5" above and 5" below dock.

- Completely assembled
- No site welding required
- Available in 20,000; 25,000; and 30,000 lb. capacities.
- Hydraulic assist and refrigerated lip available as options. Hydraulic assist can be retrofitted on existing units, or is available as an add-on option.



Lo-Dock Leveler  
Door Seal

Because of gradability problems, dock levelers are not recommended for use with pallet jacks or stackers.

