

# One-Stop Solution

Coordinating AGV operations with elevator systems for inter-floor logistics

Production line feeding

AGV-to-conveyor line docking

Automated loading of finished goods



## Rapid ROI

Automation reduces labor costs by 50% and increases efficiency by 45%, significantly lowering operational expenses.

## Intelligent Decision Support

Leveraging big data and AI analytics, we provide real-time decision-making support, improving decision efficiency by over 30% and optimizing resource allocation.

## Stable Performance

24/7 intelligent monitoring ensures stable operation with a failure rate of less than 0.5%, minimizing downtime.

## Rapid Deployment

Installation and commissioning take just 48 hours, with ROI achieved within 1.5 years.



# AiTEN Robotics

[www.aitenrobot.com](http://www.aitenrobot.com)

Logistics automation solutions

Autonomous industrial vehicles

Advanced control system



# AiTEN

All for simplicity!

 **China**  
SuZhou / ShenZhen  
ChangSha /QingDao

**Japan**  
Nagoya

**Korea**  
Seoul


**America**  
Los Angeles


**Spain**  
Barcelona

**Vietnam**  
Beining

**Germany**  
Dusseldorf

---

 + 86 400-106-0508

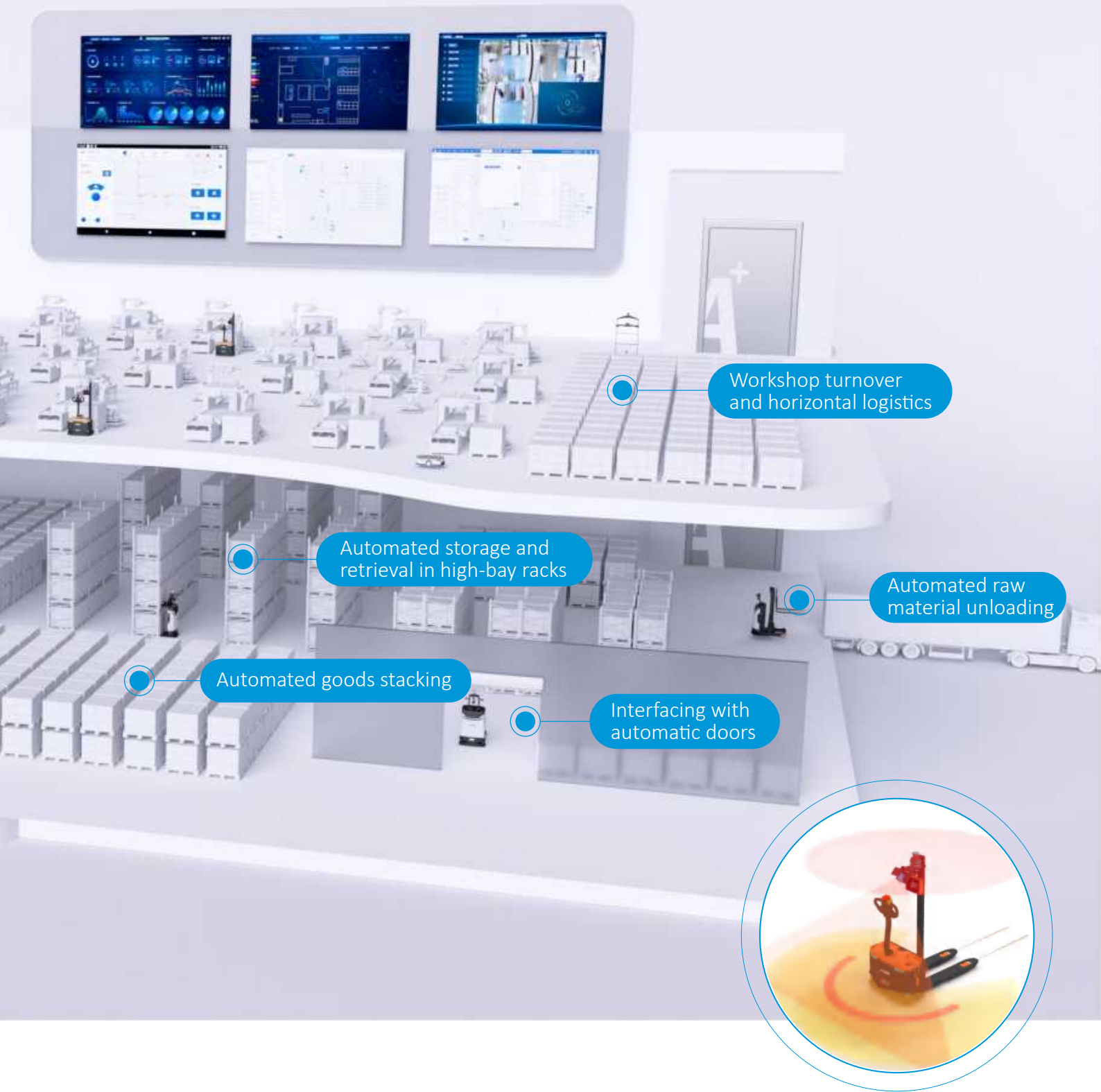
 [info@szaiten.com](mailto:info@szaiten.com)



Official Website



Download Center



## Safety As Our Top Priority

**3D SLAM Technology:** Uses 3D SLAM for high-precision localization and navigation, ensuring obstacle avoidance and reducing risks.

**Redundancy Design:** Critical components are designed with redundancy to automatically switch to backup systems in case of failure, ensuring stable operation.

**Intelligent Obstacle Avoidance :** Real-time obstacle avoidance and optimized path planning through intelligent algorithms, ensuring safe movement.

**360° All-around Protection:** Equipped with all-around sensors for 360° protection, continuously monitoring the environment and ensuring a safe distance.

## AiTEN Robotics

Founded in 2017, AiTEN strives to be a global leader in material handling robotics. The company focuses on developing intelligent logistics robots and digital control systems, delivering efficient logistics solutions across production, warehousing, and transportation.

## What Drives Us

To drive logistics transformation through technology and create a simpler, more efficient future logistics ecosystem.

### Europe

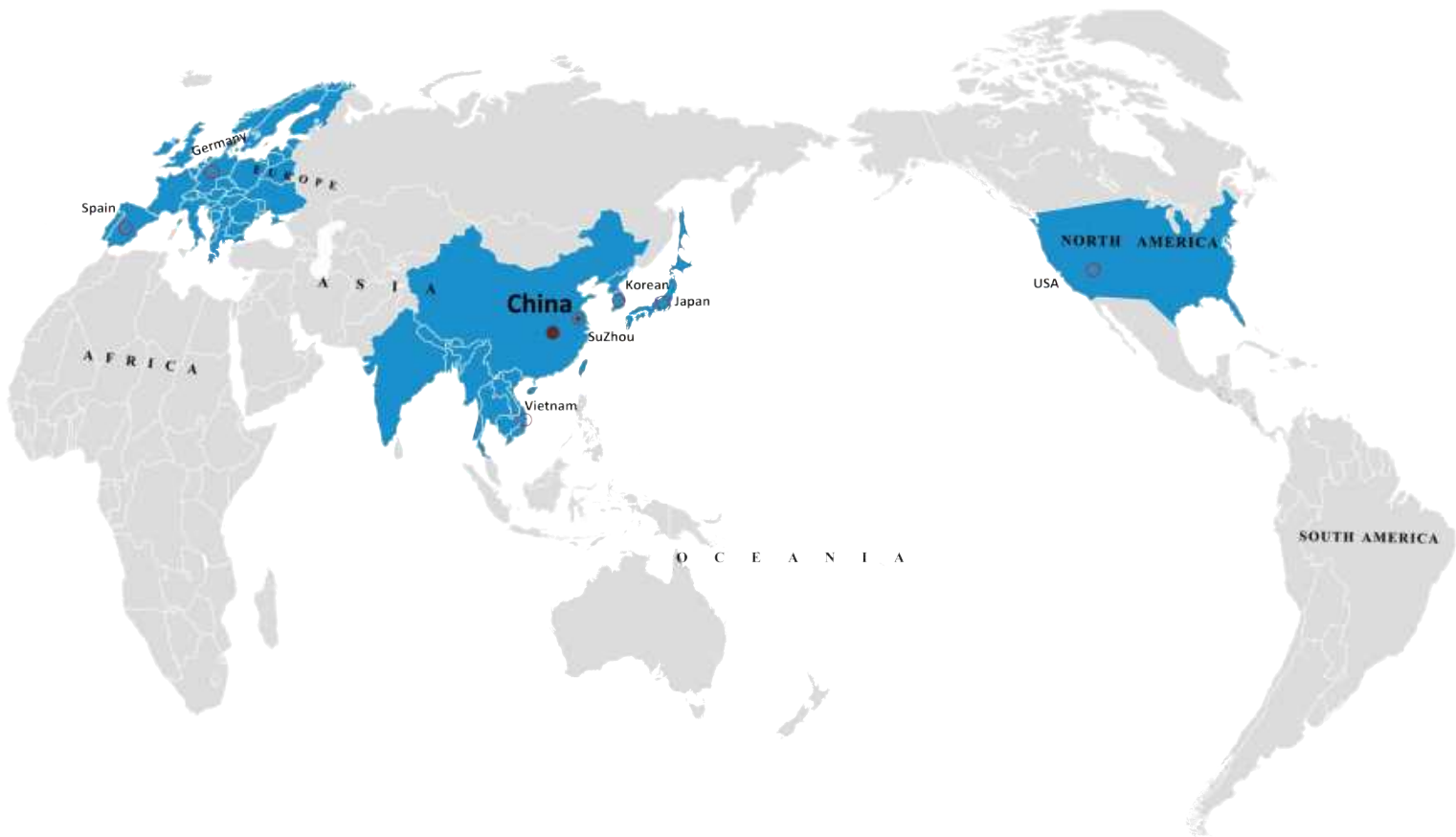
Germany / Spain / France  
England / Netherlands / Poland...

### North America

USA / Canada / Mexico...

### Asia

Mainland China / Taiwan / Korea  
Japan / Vietnam / Thailand / Malaysia...



## What We've Accomplished

Clients Served:

**800+** global clients served

Top-Tier Clients:

**20+** fortune 500 clients

Project Experience:

**2000+** projects completed

# About AiTEN

TOP  
LEVER



system

ERP    SAP  
FMS    WMS    MES    DAS

SOFTWARE



RDS  
(Robot Dispatching System)



LMS  
(Location Management Software)



VMS  
(Visual Monitoring System)



RCS  
(Robot Control System)

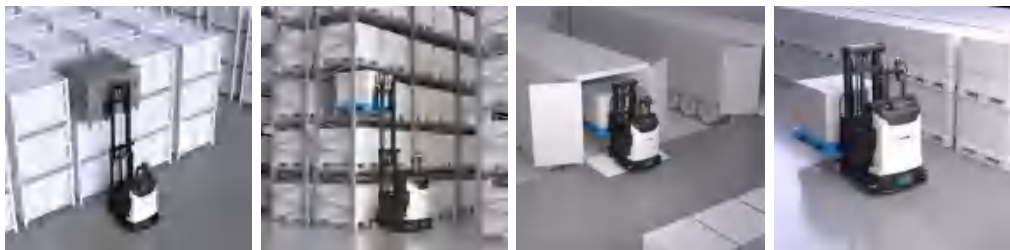


WCS  
(Warehouse Control System)

HARDWARE



SCENARIOS



PARTNERS

ASUS

UAES



TOYOTA

GREE

DAIKIN

Qisda

FOXCONN



BOSCH

Midea

TOTO

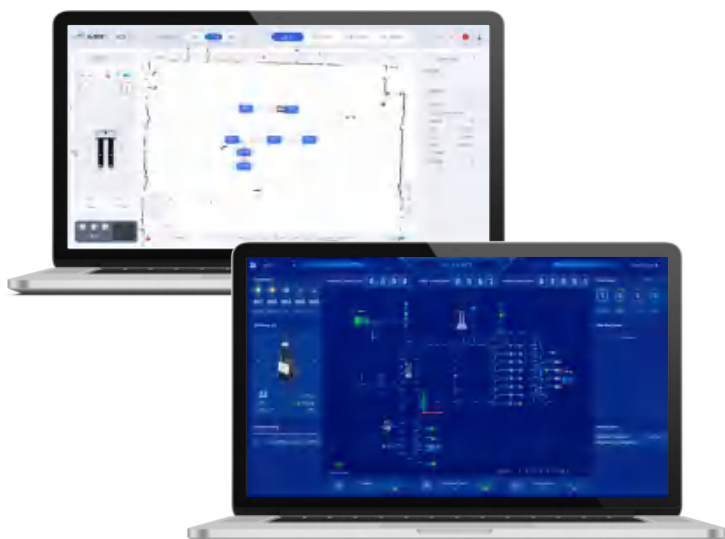
SIEMENS



JD.COM

Panasonic

MOEN



## Technology Empowerment

- Core Algorithm: SLAM-based precise positioning, ensuring stable operation in dynamic environments.
- Full-Stack R&D: Deep integration of hardware and software, offering an all-in-one solution.
- Intelligent Collaboration: Multi-robot scheduling system, flexibly handling multi-task operations.



## Handling Robots

### Master Of Narrow Aisles

Ideal for material transport and distribution in workshops, warehouses, and distribution centers, reducing manual effort and improving logistics speed.

- material feeding
- goods transportation
- short distance transportation in staging area

## Stacking Robots

### Vertical Space Utilization Expert

Optimize space and operational efficiency with precise positioning for high-density storage and complex rack access.

- sorting and stacking
- automates stacking in warehouses
- delivers materials in production

Rated Load:1000kg  
Lifting Height:1600mm

Rated Load:1500kg  
Lifting Height:4500mm



Rated Load : 1000kg  
Travel Speed : 0.6/0.7 m/s  
(Full Load/Empty Load)

Rated Load : 2000kg  
Travel Speed : 1/1.5 m/s  
(Full Load/Empty Load)





## Transfer Robots

Expert In Smooth Transfers

Flexible solutions for production lines and logistics tasks, including sorting, transferring, and equipment interfacing.

- production line material diversion
- sorting and transfer at logistics centers
- precision transfer in the pharmaceutical industry

## Loading/Unloading Robots

Pioneer In Efficient Unloading

Efficiently handle bulk cargo in trucks and containers, reducing labor costs and increasing accuracy.

- automates inventory sorting
- manages logistics in warehouses
- unloads raw materials.

Rated Load:300kg  
Lifting Height:60mm



Rated Load : 1000kg  
Travel Speed : 1.3/1.5 m/s  
(Full Load/Empty Load)



Rated Load:1500kg  
Lifting Height:9000mm



Rated Load:2000kg  
Lifting Height:6000mm

