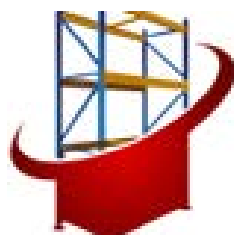




Selective Pallet Rack



MATERIAL
HANDLING EXCHANGE

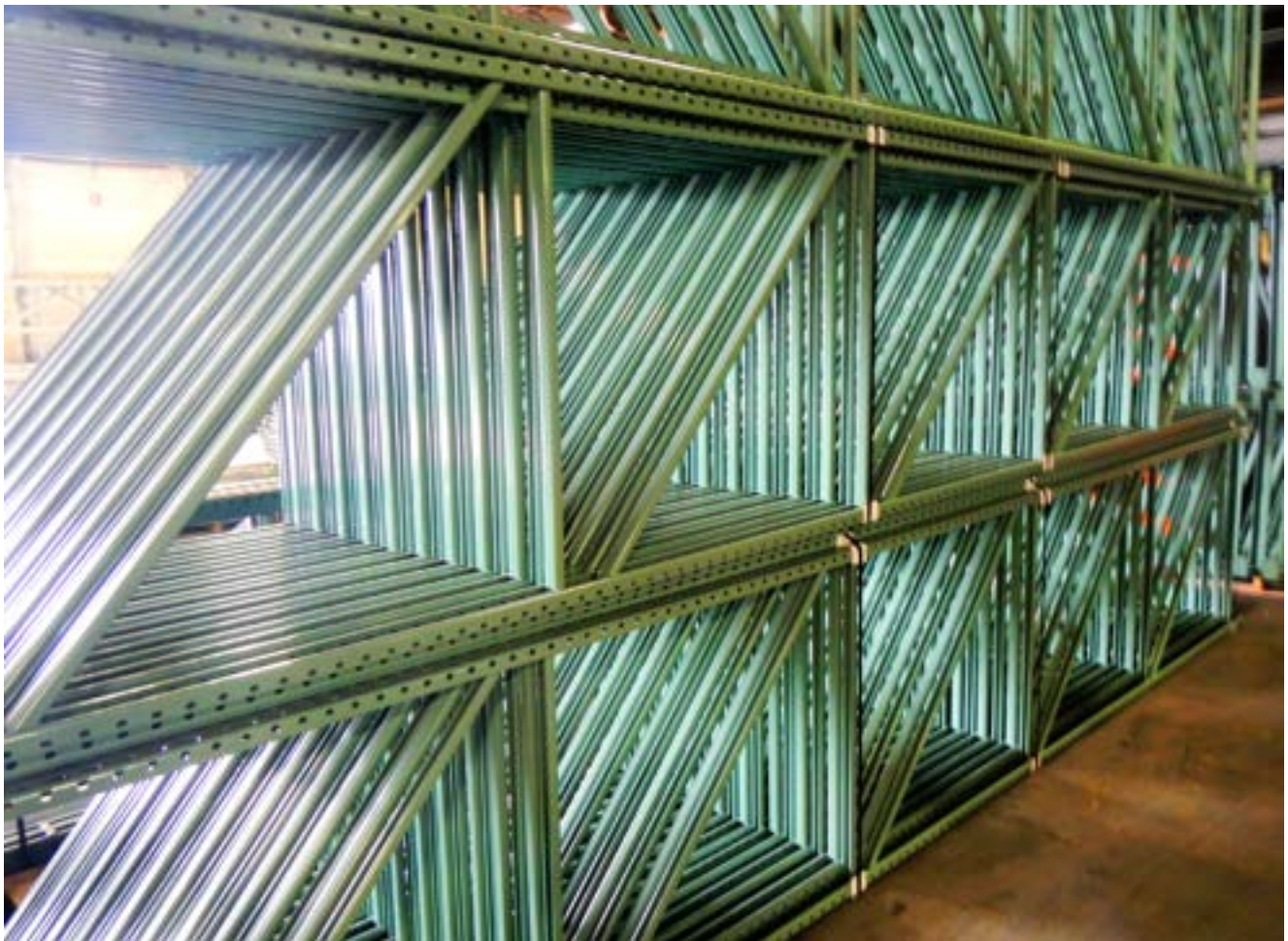


What is Selective Pallet Rack?

Selective pallet racking is the most common type of racking used in today's warehouses. Along with its efficient use of space, it provides "selectivity" to all products on the rack giving you instant access to what you need. Selective pallet rack is also a very flexible when it comes to expanding or reconfiguring your system in the future.

What material handling products are included in selective pallet racking? At its core, uprights (frames), beams (cross beams), and various pallet rack accessories. Material Handling Exchange specializes in the manufacturing of most of your selective pallet racking needs. From our high quality roll-formed beams and uprights to the most common accessories, we will have you covered. The following pages are a sampling of what MHE has to offer.

We Manufacture Your Storage Solutions



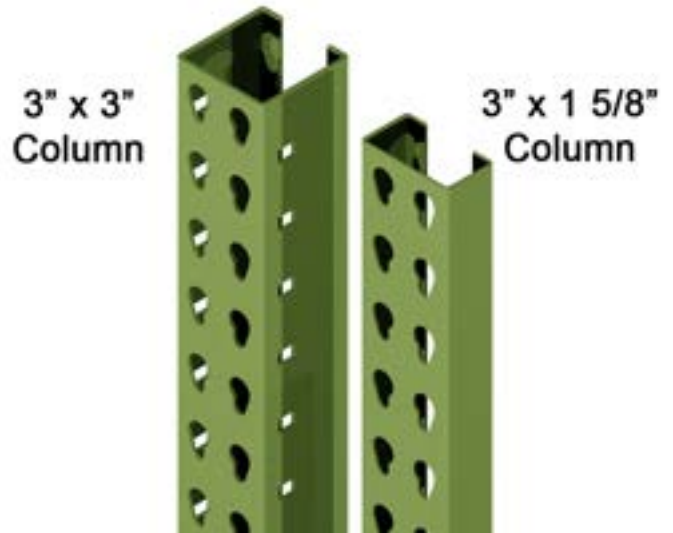
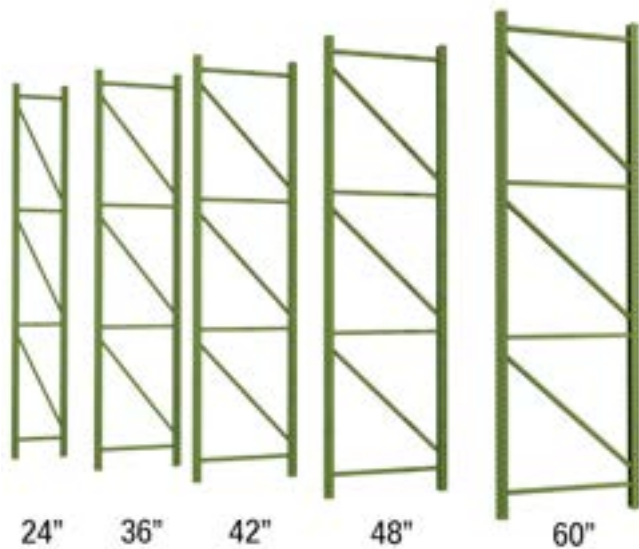
Upright Frames

MHE's pallet rack upright frames are made from heavy duty 14 gauge steel and are assembled using a welded construction design to create a ridged and very durable end result. These welded uprights have tear drop holes punched every 2" which allow for the easy adjustability of your beam levels within your pallet rack system.

Our uprights are interchangeable with all other manufacturer's teardrop designs. These uprights have a long lasting powder coat finish that is baked on at over 900 degrees.

Some Advantages of MHE Uprights

- Made from 14 Gauge steel
- Foot plates are made to bolt to the floor easily
- Shelf levels can be adjusted to allow for any size pallet.
- Teardrop style allows for use of a number of beam styles
- Braces are placed on the upright strategically to allow for maximum strength & durability



Material Handling Exchange manufactures and stocks all the common sizes you would find in any warehouse.

From 24" to 60" deep uprights, MHE has you covered for any size pallet you may encounter in a warehouse.

We also have almost any height you will ever need. Need a custom height for you warehouse? We have you covered.

The capacity of an upright is determined by a couple things. Gauge of steel, column size, and beam spacing.

- The thicker the gauge of steel, the higher capacity the upright can handle. The downfall is a heavy frame and higher cost.
- The column also affects the capacity. A 3" x 3" column has a higher capacity than a 3" x 1 5/8". Most people just need a 3" x 1 5/8".
- Vertical spacing is the distance between the beams. Greater distances yield lower capacity. Most manufacturers base it upon 48" spacing.

M-H-E Upright Capacities For Teardrop Compatible Pallet Racking						
Maximum Vertical	UR-1	UR-2	UR-3	UR-4	UR-5	UR-6
Beam Spacing	3" x 1 5/8" 14 Gauge	3" x 1 5/8" 13 Gauge	3" x 3" 14 Gauge	3" x 3" 13 Gauge	3" x 3" 12 Gauge	3" x 3" 11 Gauge
36"	18,900	22,200	28,200	36,000	40,500	47,900
42"	17,200	20,800	26,000	33,000	37,100	43,800
48"	15,000	19,200	22,900	29,000	32,500	38,300
54"	13,600	17,600	21,000	26,500	29,700	34,800
60"	12,200	15,800	19,200	24,000	26,800	31,300
66"	10,700	14,100	17,600	21,400	23,900	27,800
72"	9,300	12,400	15,800	18,900	21,000	24,400
84"	7,200	9,600	14,100	16,400	16,400	19,000
96"	5,700	7,600	12,400	13,000	13,000	15,100

Maximum Vertical Beam Spacing is measured from Floor to Beam. Whichever is greater.

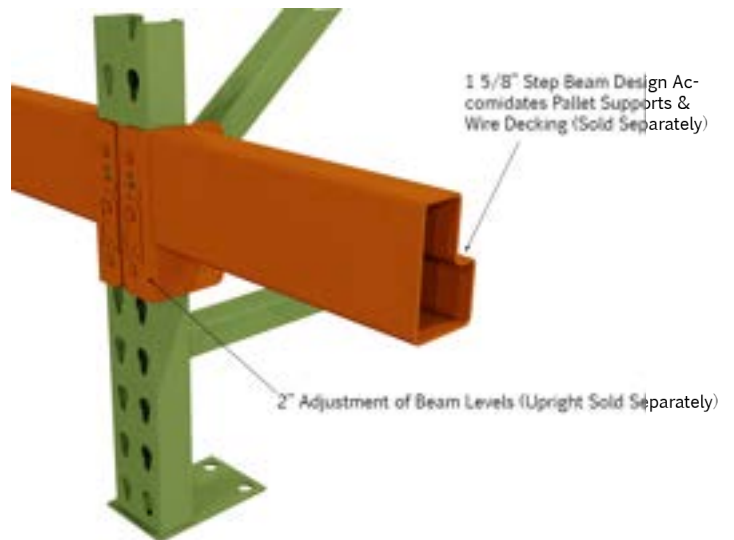
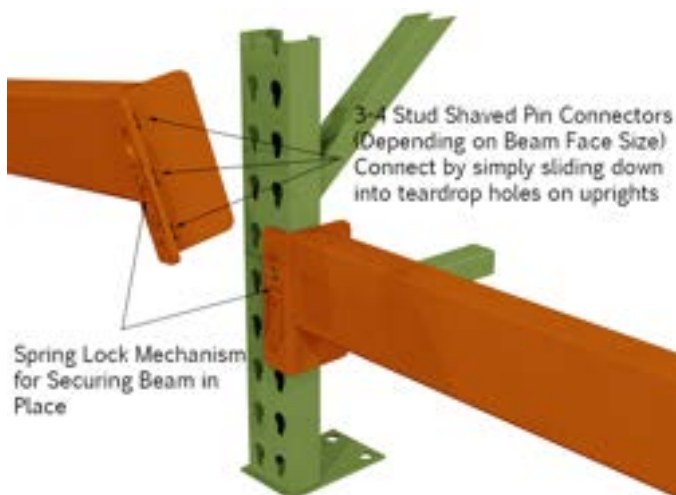


Beams

MHE offers a one-piece pallet rack beam design with an interchangeable connector clip that will work in all tear drop brands including the New Style Interlake design. These beams are built with a 1-5/8" Step to accommodate pallet support bars that are both hat channel or waterfall types. Our pallet rack beams provide a secure connection to the upright frames using a 3 or 4 pin design depending the beams capacity requirements. The pins of the beam connector provide a secure positive locking system and incorporate a self locking safety spring device which automatically pops in to place when the beams are installed in uprights. Our beams are powder coated using a quality powder coating material that is baked on at 900 degrees to insure a quality finish for years to come.

Some Advantages of MHE Beams

- Pallet Rack Beams lock into slots on uprights & then are pinned on for extra security.
- Capacities can range from 1,540 Lb to over 20,000 Lb per pair.
- 16 Gauge heavy duty steel with quality powder coat finish.
- Range in size from 48 inches to over 180 inches.
- Shaved Pin Connectivity so it will work with Teardrop or Interlake New Style



MHE's pallet rack beams come with Shaved Pin connectivity. This makes them compatible with both Teardrop style racking as well as Interlake New Style racking.

All of our beams have a standard 1 5/8" step that all standard pallet supports or wire mesh decking will fit into.

Safety is always a big concern in any warehouse environment. We have designed our beams with a spring lock mechanism for securing beams in to place. No need for J-Pins. They are built right in.

We can make any size or length to fit your needs.

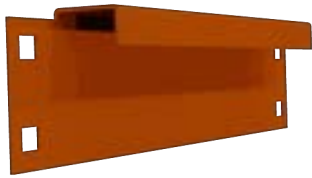


M-H-E Beam Capacities For Teardrop Compatible Pallet Racking						
FACE vs LENGTH	3"	3 1/2"	4"	4 1/2"	5"	6"
	16 GA	16 GA	16 GA	16 GA	16 GA	14 GA 16 GA
96"	3,068	4,060	5,288	6,132	7,054	10,066 9,124
102"	2,900	3,640	4,492	5,719	6,750	9,630 8,820
108"	2,560	3,300	4,276	5,456	6,336	9,002 8,166
120"	2,094	2,744	3,538	4,496	5,632	8,148 7,396
132"	1,820	2,305	2,810	3,628	4,780	7,322 6,810
144"	1,540	2,000	2,558	3,226	4,018	6,563 6,014

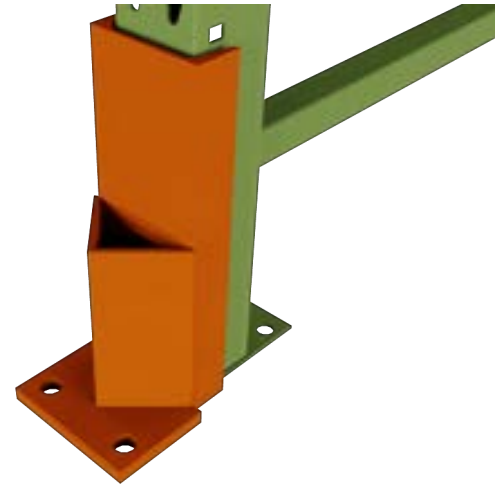
Material Handling Change can manufacture beam lengths larger than 48" to less than 180"

Accessories

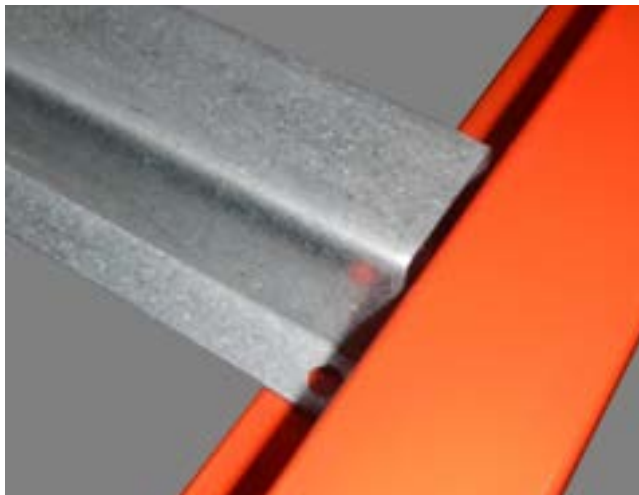
Material Handling Exchange also manufactures some of the accessories you would need for your warehouse. Below are a few of the items we manufacture and sell right to the public.



MHE Row Spacers can help keep your pallet rack rows right in line with exact spacing down the row. They bolt right to the upright so installation is extremely easy. We offer all the standard sizes and can make a custom size if you one.



MHE Column Protectors help protect your uprights from accidental damage. Forklifts or other warehouse equipment can run into an upright making it unusable and possibly dangerous. Our protectors will help stop damage. We offer bolt on and floor mount column protectors.



MHE pallet supports can be used when wire mesh decking isn't needed. With typically two pallet supports per bay, they will help supply a little extra security for your racking. They can also help if your pallet doesn't reach to the back beam. As always, never overload your levels.



MHE End of Aisle Guards are put on the end of pallet rack rows typically in the aisle way where there is considerable traffic. They supply total coverage of the upright frame from damage. They usually are made either in left or right side configurations.



Material Handling Exchange

Material Handling Exchange (MHE) has provided our customers with great quality new and used material handling products since 1989. Headquartered in Indianapolis, our 350,000 square foot warehouse facility is centrally located, which allows for quick destinations not to mention another 300,000 sf throughout the nation full of new & used material handling equipment!

What sets us apart from our competitors is the inventory that we stock.

We don't sell out of other dealer inventories. Instead, we carry the largest stock in the nation – with hundreds of thousands of beams, uprights and wire decks on hand for immediate distribution.

Our daily inventory includes:

- 30,000 new and used beams everyday
- 15,000 new and used uprights everyday
- Thousands of wire decks
- Thousands of feet of conveyor

Our team can design a system for you or quote exactly what you need. Our large in-stock inventory of teardrop, new style, & many more beams and uprights allow us to ship your order within 48 hours.

There's more!, MHE can purchase any equipment you want to liquidate for CASH. We buy entire warehouses, including real estate. In addition, we pay cash for equipment you no longer need in your warehouse and can give you a trade-in allowance towards new material.

If you want all-inclusive consultation, our Rack and Real Estate professionals can sell or custom build a warehouse to fit your needs that can include offices, conveyor systems, forklifts, bays of racking and MUCH MUCH MORE!