

Machine Shop Case Study

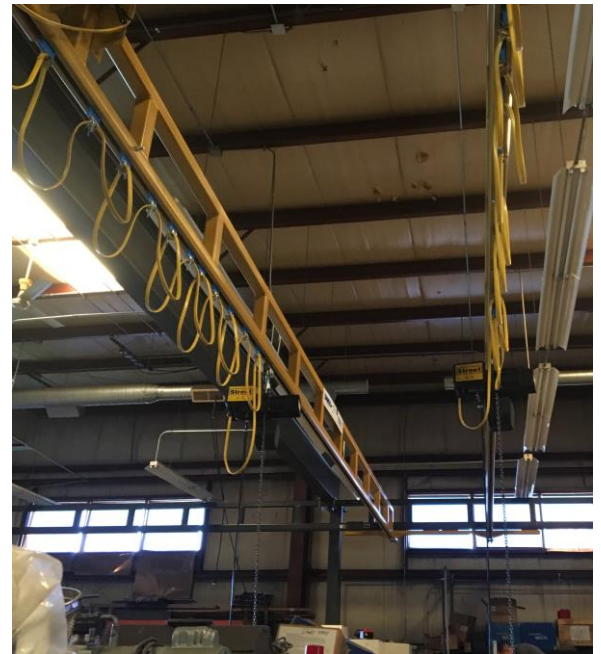
Klapperich Tool

Klapperich Tool, Inc. provides machine shop services for tool and equipment manufacturers. The machine shop produces specialized tools and parts for companies that build machines for many different industries. Their machining operations also include designing and building automated assembly systems for their customers.

The facility is equipped with milling machines, metal lathes, surface grinders, CNC machines, wire electrical discharge machines, welding machines, and more. They use large steel blocks and other heavy components for machining, and these parts have to be lifted and moved into place.



604 Hemlock Road, Morgantown, PA
800-869-2080
sales@Spanco.com
www.Spanco.com



Growth & Impact



Eliminated
dangerous
exhaust
fumes



Optimized
use of
machine
shop
floorspace



Improved
worker
productivity

Machine Shop Case Study

The Spanco Freestanding Workstation Bridge Crane improved material handling operations



The Challenge

Klapperich Tool has used propane forklifts and a single portable jib crane for their material handling for a long time. However, several problems continued to arise while workers used this equipment. One problem was the need for coordination; forklift operators have to work with spotters to ensure the loads are lifted correctly. Even with a spotter, maneuvering throughout the facility was difficult and time-consuming. This problem also affected the portable jib; it could only be used in one place at a time, and it could only be moved with a forklift.

The forklifts also caused a high concentration of propane exhaust fumes to build up inside the facility. Any time that workers had a large amount of materials to move, the exhaust fumes could become overwhelming. In the worst cases, workers would sometimes report feeling light-headed from the fumes.

The Solution

To replace their old system, Klapperich Tool purchased a Spanco Freestanding Workstation Bridge Crane with 104-foot, six-inch long runways. The bridge crane has a capacity of 2,000 pounds with two 1,000-pound capacity bridges, each with an overall span of 32 feet.

The system covers the entire machine shop, which streamlined all material handling operations. Workers don't have to stop work to move the jib around the shop or spot for a forklift operator.

The bridge crane was installed with strategically placed support centers throughout the shop, which optimizes the available floorspace. By reducing the amount of machinery moving around the shop and eliminating the propane fumes, the also improved worker safety within the machine shop.

“Spanco’s Regional Sales Manager brought expert knowledge that was key to finding the best solution for our application.”

Paul Klapperich, Klapperich Tool