

Agriculture Machinery Company Outfits New Facility with Cleveland Tramrail® by Gorbel®

About Gorbel®

Gorbel® has over 40 years of experience providing material handling solutions that help companies improve their safety, ergonomics, and productivity.

Providing a comprehensive line of overhead lifting and ergonomic positioning equipment, Gorbel® uses a consultative approach to match solutions with industry needs. Regional distributors bring expertise to the local level while Gorbel® products are used internationally in industries ranging from heavy manufacturing to aerospace. Products include enclosed track workstation and jib cranes, monorails, G-Force® Intelligent Lifting Devices, GS Electric Chain Hoists, and Cleveland Tramrail® patented track cranes. Additionally, Tether Track™ provides fully engineered fall arrest for those working at heights.

For warehouses and distribution centers, Destuff-it™ portable ergonomic conveyors provide a safe and efficient solution for handling floor-stacked packages in shipping containers or related vessels. The Gorbel® Warehouse Solutions line also includes rugged cascading belt conveyors that can withstand even the toughest order-fulfillment environments.



Contact Information

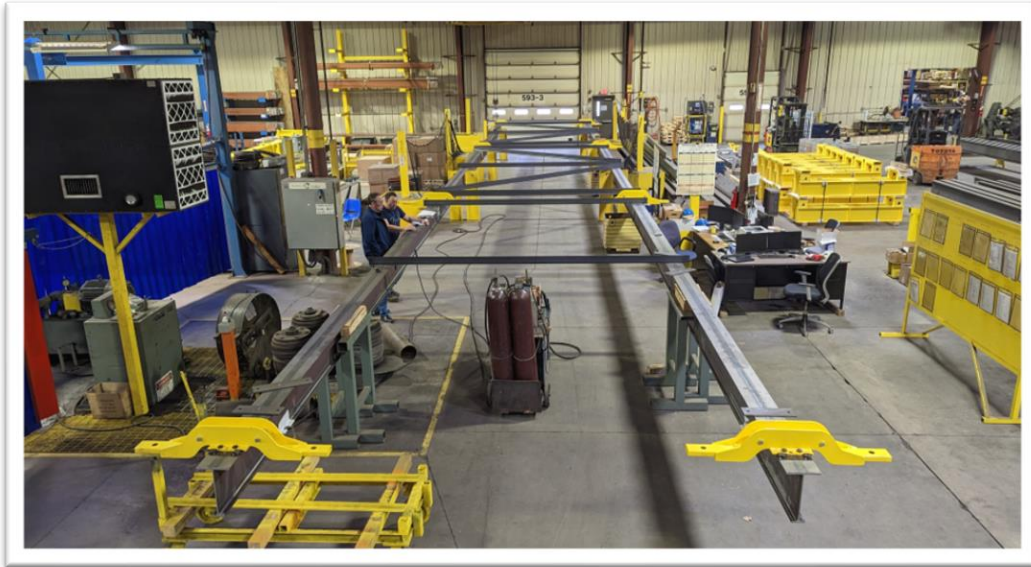
Rob Beightol
600 Fishers Run
Fishers, NY 14453

Phone: 800-821-0086
Email: info@gorbel.com
Website: www.gorbel.com

***“We Improve
People’s Lives”***

The Gorbel® Mission

Agriculture Machinery Company Outfits New Facility with Cleveland Tramrail® by Gorbel®



Background

Hagie Manufacturing, a leading provider of agricultural crop sprayers and large-scale snow removal equipment, decided to expand its facility to improve workflow. As part of this expansion, Hagie also sought to enhance lifting capabilities in its sub and final assembly work bays for crop sprayers.

The Problem

The location of Hagie's existing assembly areas was not ideal and required workers to constantly transfer parts, which was draining time and resources. Their final assembly area was also significantly undersized, measuring in at 30' even though the largest crop sprayers were 48' across. During the expansion, Hagie built a facility large enough for the side-by-side positioning of the crop sprayer sub-assembly and final assembly areas – but a material handling solution was needed to make interplay between those work bays efficient.

The Solution

Hagie decided to install two Cleveland Tramrail® patented track overhead bridge cranes because of their inherent strength and inflexibility. These systems were ceiling mounted, had 202' of runways to span the entire length of the assembly area, and were outfitted with electric chain hoists. The durability of the hardened running surface ensured performance across many shifts. Ultimately, Hagie felt the design of this lifting system could be adapted to evolve with their company for decades to come.

GORBEL®
A C L A S S A B O V E