



Nomadic Crane Changing the Mold at Huhtamaki

Features and Benefits

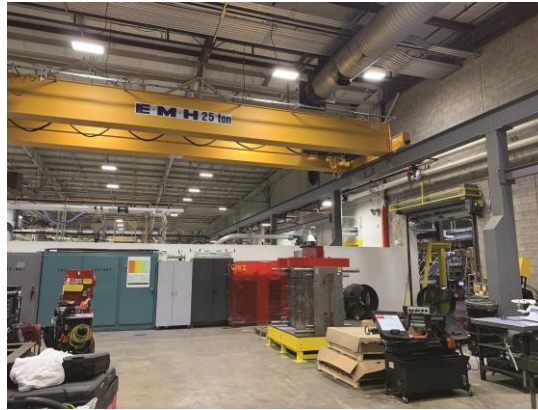
- NOMAD® Free Standing Cranes provide flexible solutions for manufacturers when needs change, or when traditional overhead crane installation is either difficult or impractical.
- Base plate design allows most NOMAD Cranes to be installed without footers.
- With bolted assembly, NOMAD Cranes are easily dismantled, relocated, and reassembled when the need arises.
- With NOMAD XW, overall widths up to 70 feet with overall heights up to 25 feet and capacities from 2 tons up to 30 tons are now possible.

Industry Groups:

MHI Member Company
Crane Manufacturers Association
of America (CMAA)
Material Handling Equipment Distributors
Association (MHEDA)

According to a Huhtamaki MCP Manufacturing Engineer,

“We have been extremely pleased with EMH and their freestanding cranes. We now have one positioned over every plastic injection molding machine in our facility and have never had a problem. It’s why we’ve never considered another crane solution from another manufacturer. We are especially pleased because we sometimes press these cranes to lift some of our heaviest molds, which are close to the crane’s recommended weight limit. We have never experienced a problem.”



Huhtamaki is a global provider of sustainable food packaging solutions. Its two facilities in New Vienna, Ohio, specialize in making plastic Chinet tableware and ice cream lids. With major customers including Walmart, Huhtamaki’s Ohio plants remain busy. Huhtamaki’s manufacturing process relies on large plastic injection molding presses. When changeover requires a new mold or when problems require mold repair, time is of the essence. Previously, Huhtamaki relied on subcontractors and riggers. Availability and pricing varied, which could be problematic.

NOMAD® XW freestanding cranes solved the problem and eliminated the need for outside contractors, putting Huhtamaki back in control of its processes. To date, EMH has installed four low headroom, high capacity (20-25 ton) NOMAD freestanding crane systems in each of Huhtamaki’s four main production rooms.

A customized EMH NOMAD XW (extra wide) freestanding crane was their most recent solution. EMH customized it to Huhtamaki’s specific layout, with a 250-foot length and 50-foot span. Column spacings varied to fit the production floor. There were no headers to maximize the hook height on the system. EMH also provided a step box girder, allowing the hoist to ride between the bridge girders, maximizing lift over the injection mold machines but under the roof trusses.

EMH NOMAD Cranes are available for one, two, three or four-cell manufacturing systems, with safety-enclosed-type runway electrification, brackets that are welded on runway support columns, and with the conductor bars installed in the field. Each system comes complete with mounting plates, bolts, and bumpers and with top running end-truck travel speeds of 80 or 120 FPM (VFD). Wire rope hoists provide lifting speeds of 16/2.6 FPM with trolley speeds of 65 FPM (VFD).



Engineered Material Handling (EMH Crane)

550 Crane Drive, Valley City, OH 44280

Phone: 1-330-220-8600

Email: info@emh-cranes.com

www.emhcranes.com

EMH Overhead & Workstation Cranes:

<https://www.youtube.com/watch?v=HktvRVrdlgM>