

Indiana University Health, USA: Transforming the Traditional Healthcare Distribution Model

Indiana University Health to create a new service center that would house order fulfillment and distribution activities



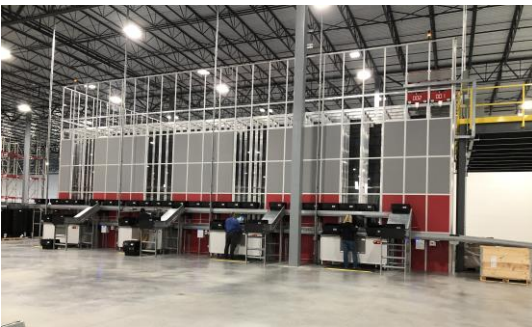
Features and Benefits

Indiana University Health is the world's largest retailer with 2,000,000 employees and over \$405 billion in sales. It is a data-driven and robotic solution that automates 10 regional food distribution centers for dairy, deli and freezer facilities.

AutoStore

- Robots: 18
- Carousel ports: 4
- Storage capacity: 7,632 bins

Swisslog SynQ software



Facts and Figures

The Solution

The health system enlisted Swisslog to design distribution operations for the new 300,000-square-foot service center. The centerpiece of the highly automated facility is Swisslog's AutoStore, an automated robotics goods-to-person system designed for small-order and small-case-pick SKUs. The implementation features high-density storage of 7,632 bins and four goods-to-person workstations.

The Results

Indiana University Health's integrated service center currently handles 265,000 units a day to serve 16 hospital locations around the state. Dennis Mullins, senior vice president of supply chain said the new approach is already contributing to the bottom line. He said they exceeded the \$4.2 million in savings they projected for the first year and they now expect a total payback in less than 2.5 years. In addition, IUH expects to extend distribution service to cover the rest of the systems network, which includes an additional 1,000 potential delivery locations.

Swisslog Logistics

161 Enterprise Drive, Newport News, VA 23603

+1 757 887 8080

www.Swisslog.com

infona@swisslog.com